

PROGRAM RELEASE

AUSTRALIA & NEW ZEALAND
NOVEMBER 2023 - SEPTEMBER 2024



Cruising from Australia •
80
Years
• Cruising from Australia

P&O CRUISES
LIKE NO PLACE ON EARTH

NEW BROCHURE AVAILABLE TO
DOWNLOAD 13 OCTOBER

Program On Sale 13 October 2021



CONTENTS

WHAT'S NEW

NEW! Australian Explorer Voyage	03
Fleet Update	05
Twin Racer Waterslide - Coming Soon!	06-07
Pacific Adventure® - Cruising from Sydney	08
Pacific Encounter - Cruising from Brisbane	09
Pacific Explorer - Cruising from Brisbane, Cairns, Melbourne, Fremantle and Auckland	10
More Choice in Rooms	11
South Pacific Experts	12

PROGRAM UPDATE

What's New by Homeport	
P&O Short Islands	13
P&O Short Breaks	14
P&O Main Events	15
Highlights	16-20
P&O Assurance	21
P&O Healthy Cruising	22
Onboard App - NEW!	23
Cruise Calendar	24

DEPARTING IN 2024
P&O's first Round Australia cruise in 90 years!

WHAT'S NEW

AUSTRALIAN EXPLORER

Who said you had to leave home to have a good holiday? Our own backyard brims with delights, and our NEW 28 night Australian Explorer cruise will take you there.

DARWIN

Unlike the barren dusty land of the Northern Territory, Darwin is a modern, lively city and the gateway to our fascinating Top End.

KURI BAY

Nestled in the remote Kimberley Coast area, the Kuri Bay coastline is highlighted by magnificent red rock escarpments and a peaceful turquoise bay.

YAMPI SOUND & RAFT POINT (SCENIC CRUISING)

Enjoy unforgettable sweeping ocean views, jam-packed with natural wonders, beautiful clear blue waters and stunning Kimberley landscapes.

BROOME

From its romantic pearling history to the cosmopolitan character, incredibly clear waters to red sandstone cliffs and endless white sand beaches, the colours of Broome are sure to leave a lasting impression.

EXMOUTH

Nothing can prepare you for Exmouth's unspoilt and seemingly deserted beaches, its pristine deep blue ocean or its dramatic red ochre coastline.

FREMANTLE

Fremantle is a dynamic and vibrant port city situated on the mouth of the Swan River. It is renowned for its cosmopolitan atmosphere, maritime history and it's days as a penal colony.

ALBANY

Want pioneer history? Albany has an old penal colony and a museum devoted to whaling.

ADELAIDE

The beautiful capital city of South Australia has both country town friendliness and urban sophistication, giving it a distinctly European feel.

AMBON

Ambon, capital of Maluku, Indonesia's 'spice islands' is lined with beautiful beaches and unspoilt bays. Its crystal clear, coral rich waters are perfect for snorkelling and scuba diving.

CAIRNS

Take the historic and scenic Kurandah Rail, head to the Great Barrier Reef, test your skills whitewater rafting or go crocodile-spotting.

AIRLIE BEACH

With easy access to the Whitsundays, this is a waterlover's haven, whether you're in it or gliding over it. Be adventurous with scuba diving, sea kayaking or ocean rafting.

BRISBANE

Explore a city full of contradictions. A place of shorts and thongs and high finance, both sophisticated and rustic. A city eager to change, yet reluctant to abandon its old ways.

SYDNEY

Home to two of the world's most famous landmarks – the Sydney Harbour Bridge and the Sydney Opera House, both perfectly situated on the magnificent harbour.

MELBOURNE

Make sure there's room in your suitcase and get the cards ready. You'll find the latest fashions, accessories, and fine produce, trendy, hidden bars, cafes and restaurants inspired by a diversity of cultures.



Please note, guests are required to hold a valid passport for the full 28 and 32 night itineraries and any sector that includes Ambon as a port of call.

AUSTRALIAN EXPLORER

CRUISE FROM BRISBANE

SHORT BREAK

2 NIGHTS | 04 JUNE 2024 | X427A

Brisbane, Sydney



CRUISE FROM SYDNEY

32 NIGHTS | 06 JUNE 2024 | X427B

Sydney, Melbourne, Adelaide, Albany, Fremantle, Exmouth, Broome, Yampi Sound & Raft Point (Scenic Cruising), Kuri Bay, Ambon, Darwin, Cairns, Airlie Beach, Brisbane, Sydney, Auckland



28 NIGHTS | 04 JUNE 2024 | X427

Brisbane, Sydney, Melbourne, Adelaide, Albany, Fremantle, Exmouth, Broome, Yampi Sound & Raft Point (Scenic Cruising), Kuri Bay, Ambon, Darwin, Cairns, Airlie Beach, Brisbane



28 NIGHTS | 06 JUNE 2024 | X427C

Sydney, Melbourne, Adelaide, Albany, Fremantle, Exmouth, Broome, Yampi Sound & Raft Point (Scenic Cruising), Kuri Bay, Ambon, Darwin, Cairns, Airlie Beach, Brisbane, Sydney

CRUISE FROM FREMANTLE

19 NIGHTS | 15 JUNE 2024 | X427E

Fremantle, Exmouth, Broome, Yampi Sound & Raft Point (Scenic Cruising), Kuri Bay, Ambon, Darwin, Cairns, Airlie Beach, Brisbane, Sydney



9 NIGHTS | 06 JUNE 2024 | X427D

Sydney, Melbourne, Adelaide, Albany, Fremantle



P&O FLEET TRANSFORMATION

Our fleet transformation is now complete. Australia's homegrown cruise line is prepared and just waiting for the time when cruising is approved to re-start.



PACIFIC
Explorer

PACIFIC
Encounter

PACIFIC
Adventure

Meet our
TWIN RACER
Waterslides

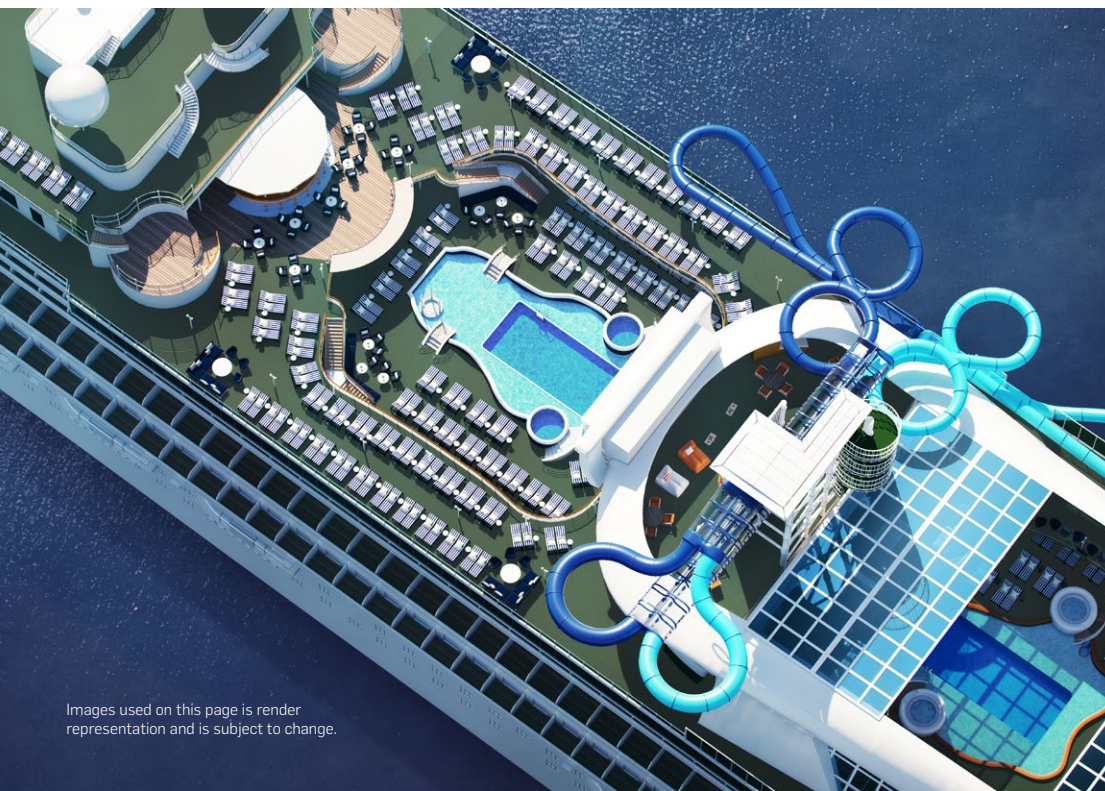
Challenge family and friends and race against the clock on Twin Racer, our exciting **NEW** waterslide on Pacific Adventure® in 2022 and Pacific Encounter in March 2023.



Images used on this page is render representation and is subject to change.



TWIN RACER



Get Ready For Our Biggest Adventure Yet

PACIFIC ADVENTURE[®]

Cruising from Sydney

NEW RESTAURANTS
NEW BARS
NEW MAGRODOME
FAMILY AREA
NEW BYRON BEACH
CLUB

DESTINATIONS

South Pacific, Main Events,
Short Breaks, Australia & New
Zealand, Voyages

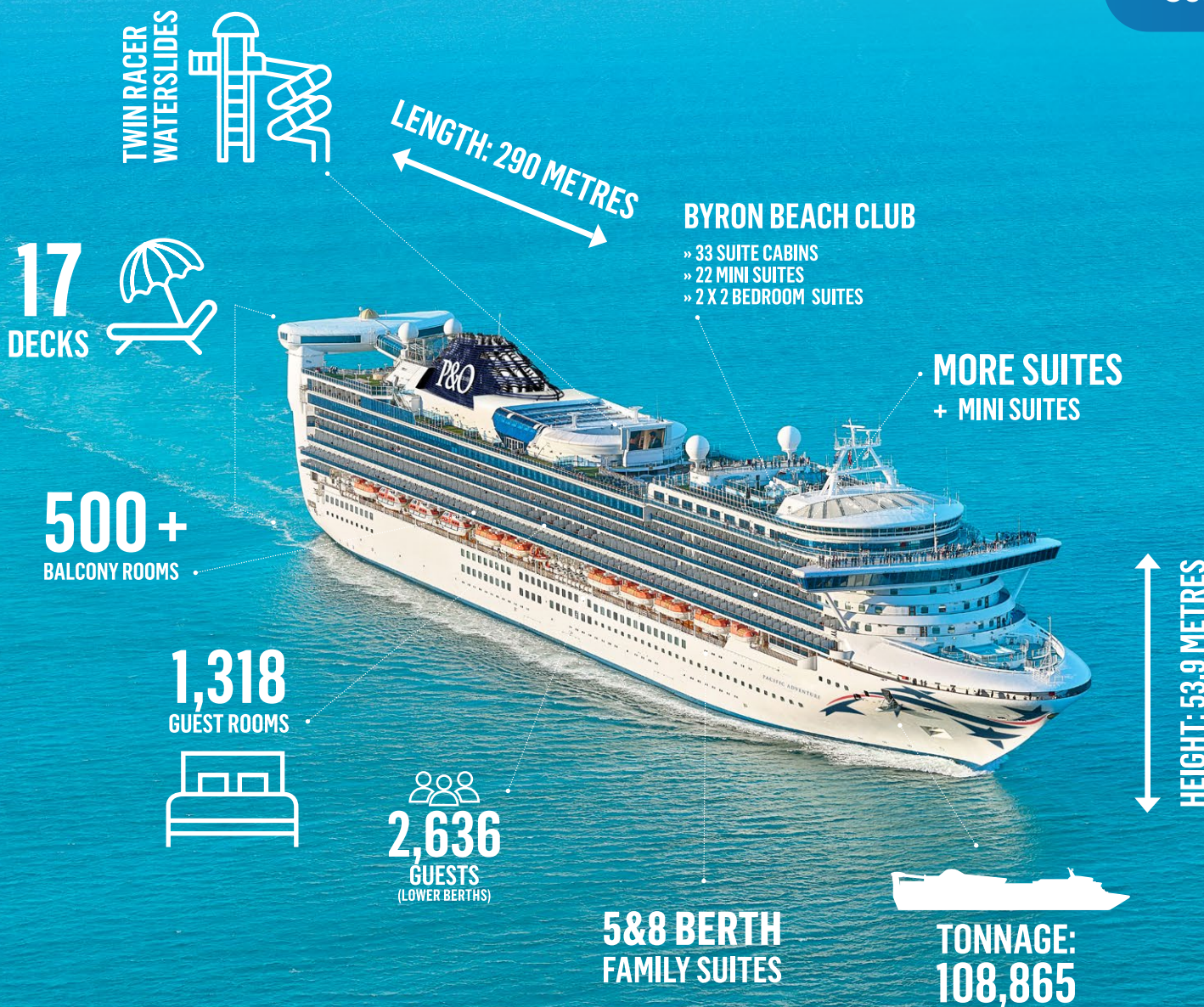
KIDS CLUBS

4 fully supervised kids clubs

DINING

INCLUDED:
Waterfront, Angelo's,
Dragon Lady, The Pantry

SPECIALTY DINING:
Luke's Bar and Grill, 400 Gradi,
Shell & Bones, Luke's Burger Bar,
Gradi Pronto



PACIFIC ENCOUNTER

Cruising from Brisbane



NEW RESTAURANTS
NEW BARS
NEW MAGRODOME
FAMILY AREA
NEW BYRON BEACH CLUB
ARCADE

DESTINATIONS	Australia, South Pacific, New Guinea, Main Events, Short Breaks and Voyages
KIDS CLUBS	4 fully supervised kids clubs
DINING	INCLUDED: Waterfront, Angelo's, Dragon Lady, The Pantry SPECIALTY DINING: Luke's Bar and Grill, 400 Gradi, Shell & Bones, Luke's Burger Bar, Gradi Pronto

Twin Racer waterslides will be on Pacific Encounter on 23 March 2023.

PACIFIC EXPLORER

*Cruising from
Brisbane, Auckland, Cairns,
Melbourne and Fremantle*

Whiz down waterslides by day, enjoy great restaurants and bars in the evening and catch an edgy new stage show at night. There's something for every member of the family!

11
DECKS



WATERSLIDES
AND WATERPARK



LENGTH: 260 METRES



TONNAGE:
77,441

5 BERTH
ROOMS

1,000
GUEST ROOMS




1,998
GUESTS
(LOWER BERTHS)

OVER 300
BALCONY ROOMS

DESTINATIONS

South Pacific including Papua New Guinea, Main Events, Short Breaks, Australia & New Zealand, Voyages

KIDS CLUBS

4 fully supervised kids clubs

DINING

Waterfront, Angelo's, Dragon Lady, The Pantry, A Taste of Salt, Shell & Bones, 400 Gradi, Chef's Table, Luke's, Charlie's Bar and New Zealand Natural



PACIFIC ADVENTURE AND PACIFIC ENCOUNTER OFFER MORE CHOICE *in Rooms*

Your clients are spoilt for choice on Pacific Adventure and Pacific Encounter.

Choose from:

- 2 bedroom suites (8 berth)
- Suites (twin and quad)
- 5 berth window suites*
- Mini suites (twin and quad)
- Balcony rooms (twin and quad)
- Oceanview (twin and quad)
- Interior (twin and quad)
- Interconnecting*

*Rooms to be installed on Pacific Encounter at a date TBA

Suite it up

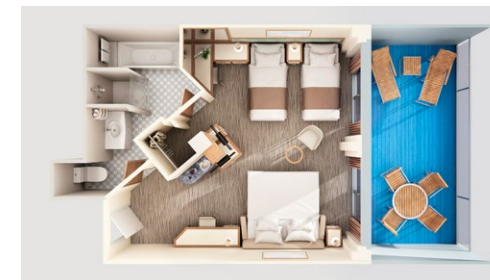
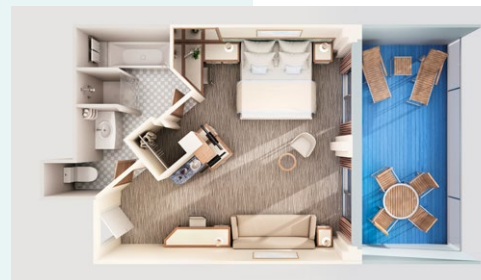
With more room, more benefits and a located in a prime position, suites are a great way to treat yourself. Enjoy 100% relaxation on your own spacious private balcony and comes with access to the Byron Beach Club*. Some suites are two bedroom and are ideal for families.

Plus, there are a number of **added benefits** which include:

- **Free laundry, ironing & shoe polishing service**
- **Priority dining, spa & shore tour reservations**
- **Priority ship embarkation, tender and debarkation**
- **Pillow concierge**
- **Spacious private balcony & open living area**

BALCONY WITH YOUR OWN PRIVATE CHILL SPACE

You're spoilt for choice – all in a nice peaceful location with easy access to all the action. Your own balcony is your personal chill space with the added benefit that you get to wake to a new view every single day.



*Not available in 5 berth suites.
Please note that room types and configuration may vary and subject to change.

SOUTH PACIFIC EXPERTS



We've been taking Aussies to the South Pacific for almost 90 years and pioneered cruising in the region. We've discovered new destinations and continually tailored our holidays, always with Aussies and Kiwis in mind. In fact, we've been going to the South Pacific for so long, we're almost locals.

Over the years, we have developed strong relationships with local government bodies to facilitate investment into schools and other infrastructure projects that have improved the lives of the those in the communities we visit.





P&O Islands

There is so much choice for everyday Aussies and families to enjoy the idyllic Pacific Islands. Choose from **thirty four** 7-12-night itineraries, departing from Sydney, Brisbane, Cairns, or Auckland. Papua New Guinea continues to be popular with seven departures from either Sydney, Brisbane or Cairns



Aussies and Kiwis love the convenience of cruising from their doorstep with P&O Cruises.

P&O Short Breaks

Our ever-popular Short Break cruises continues to grow. This release contains 73 x 3- to 4-night roundtrip Short Break cruises and includes twelve 4-night Tangalooma-Moreton Island cruises between July 2023 and June 2024 departing from Sydney. Themed Short Breaks are also expanded with thirty nine 3-night roundtrip cruises from Sydney, Brisbane, Adelaide, Fremantle or Auckland



P&O Sea Australia & New Zealand

This program includes more opportunities for Aussies to explore our beautiful backyard or cross the ditch to breathtaking New Zealand.

- Explore Queensland on our 7 or 10-night Barrier Reef Discovery cruises from either Brisbane or Sydney.
- Explore Western Australia on a 10-night cruise departing from Fremantle with Scenic Cruising in The Kimberley region.
- Taste of Tasmania itineraries depart from Adelaide, Melbourne or Sydney.
- New Zealand itineraries depart from Sydney, Brisbane, Melbourne and Adelaide.



P&O Main Events

We continue to celebrate Australia's Main Events with Australia Day cruises from Sydney and Melbourne as well as Melbourne Cup itineraries from Sydney and Brisbane. This program also includes:

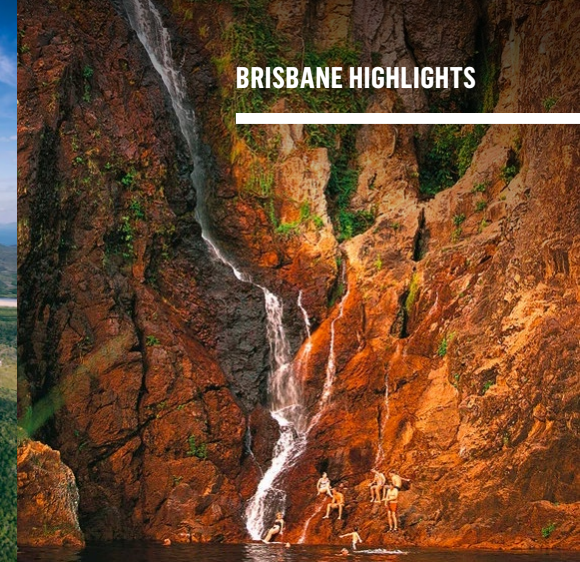
- Christmas and New Year's Eve departures from Sydney, Brisbane and Melbourne and our popular Australian Open cruise from Sydney.
- **NEW** 3-night Pride cruise from Brisbane and a 4-night Pride cruise from Sydney visiting Moreton Island.
- Four Tribute to the King itineraries from Sydney, Melbourne, Brisbane and Auckland.

P&O Voyages

The new program includes **ten** 'Voyages' itineraries including:

- 13- to 15-night Bounty Adventure itineraries from Brisbane, Sydney and Auckland.
- Four Kiwi Adventure cruises, one from Sydney, Brisbane, Melbourne and Adelaide.
- **NEW for 2024!** A 28-night Australian Explorer itinerary around Australia from either Brisbane or Sydney, or choose a shorter sector between Sydney and Fremantle.
- One-way Indonesian Explorer itineraries to or from Sydney and Singapore.





WHAT'S NEW *from Brisbane*

Pacific Encounter continues year round cruising trip from Brisbane and will offer over 60 roundtrip departures from October 2023 – September 2024.

Queenslanders will love the diverse range of itineraries on offer, including the ever popular 7-night Islands or Barrier Reef Discovery cruises departing on a Saturday.

- **More P&O Islands departures:**

- Five 10-night New Guinea Island Encounter cruises featuring four Papua New Guinea ports including a visit to the beautiful and untouched Conflict Islands.
- A 12-night Fiji Adventure itinerary featuring calls to Lautoka and Dravuni Island
- A 14-night Kiwi Adventure itinerary in February 2024
- A 14-night Bounty Adventure itinerary in July 2024

- **More Short Breaks**

This program includes 28 3- or 4-night Short Breaks from Brisbane including:

- Fifteen 3-night Themed Short Breaks
- Thirteen 4-night one-stop Short Breaks, visiting Airlie Beach in the beautiful Whitsundays

- **Main Event** cruises include:

- 4-night Tribute to the King itinerary in March 2024
- Christmas and New Year's Eve itineraries
- 8-night Melbourne Cup itinerary in November 2022
- **NEW** 3-night Pride cruise in December 2023

NEW! A 28-night Australian Explorer circumnavigation of Australia in June 2024 on **Pacific Explorer** featuring 12 calls including Melbourne, Adelaide, Albany, Fremantle, Exmouth, Broome, Kuri Bay and scenic cruising of Raft Point and Yampi Sound in The Kimberley's before stopping in Darwin, Ambon, Cairns and Airlie Beach and returning to Brisbane.

Changes to Published Itineraries:

- Pacific Encounter's (I315) 4-night Whitsundays Short Break cruise departing 28 Mar 2023 will now also be a Main Events Tribute to the King themed itinerary.
- Pacific Encounter's (I322) 3-night Tribute to the King itinerary departing 12 May 2023 has been changed to a Comedy themed cruise.



WHAT'S NEW *from Sydney*

From July 2023 – June 2024 P&O Cruises will offer 52 cruises roundtrip from Sydney on Pacific Adventure plus a NEW 28-night Round Australia voyage on Pacific Explorer.

- **P&O Islands departures include:**

- Twelve South Pacific 8 to 12-night itineraries
- An 8-night Taste of Tasmania itinerary
- Two 10-night Barrier Reef Discovery itineraries
- A 12-night Kiwi Adventure itinerary
- A 13-night Kiwi Adventure itinerary
- A 15-night Bounty Adventure itinerary

- **More Short Breaks**

- Twelve 4-night Tangalooma-Moreton Island itineraries
- A 4-night Hobart itinerary
- Thirteen 3-night themed Short Break cruises
- Two 3-night Sapphire Coast Food and Wine Festival cruises with a call to Eden.

- **Main Event** cruises include:

- 6-night Melbourne Cup itinerary in November 2023
- 3-night Australia Day in January 2024
- 5-night Australian Open itinerary in January 2024
- Christmas and New Year' Eve itineraries
- 3-night Tribute to the King themed cruise in May 2024.
- 4-night 'Pride' themed cruise visiting Tangalooma-Moreton Island in September 2023.

NEW! A 28-night Australian Explorer cruise in June 2024 on **Pacific Explorer** featuring 12 calls around our spectacular island. Cruiselings will enjoy calls at Melbourne, Adelaide, Albany, Fremantle, Exmouth, Broome, Kuri Bay and scenic cruising of Raft Point and Yampi Sound in The Kimberley's before stopping in Darwin, Ambon, Cairns and Airlie Beach before returning to Sydney.

Changes to Published Itinerary:

- Pacific Adventure's (V310) 3-night Comedy theme cruise departing 3 Mar 2023 has been changed to a Main Events Tribute to the King themed cruise.



WHAT'S NEW *from Cairns*

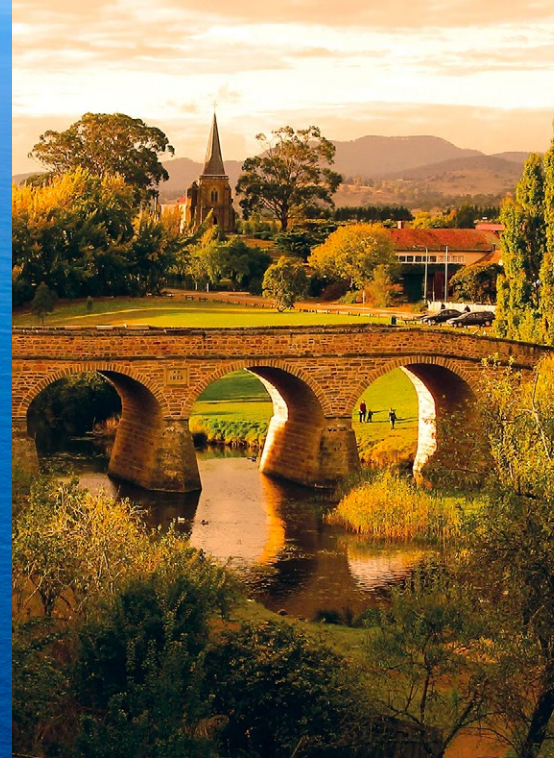
We return to Cairns in May 2024 for a short season which includes:

- A 10-night Solomon Sea Islands itinerary including calls to Honiara, overnight call in Rabaul, Kiriwina Island and the beautiful Conflict Islands
- A 7-night New Guinea Island Encounter itinerary
- A 3-night Cairns to Brisbane one-way **Short Break** cruise calling at stunning Airlie Beach

WHAT'S NEW *from Adelaide*

Pacific Explorer embarks on her third Adelaide season between February and March 2024 with seven roundtrip Itineraries:

- A 14-night New Zealand cruise featuring ports in the breathtaking South Island and scenic cruising of Fiordland National park, along with a call to Melbourne on the return trip to Adelaide
- A 7-night South Australia & Taste of Tasmania itinerary calling at Kangaroo Island, Hobart and Melbourne
- Two 3-night Themed **Short Breaks**, one Comedy and one 80s themed
- Three 4-night Short Break cruises visiting Kangaroo Island & Port Lincoln
- A 5-night one-way Short Break itinerary from Adelaide to Fremantle, with calls to Albany and Busselton



WHAT'S NEW *from Melbourne*

Pacific Explorer returns to Melbourne between December 2023 and February 2024 with 13 roundtrip cruises:

- One 5-night and one 7-night Taste of Tasmania itinerary
- One 13-night Kiwi Adventure itinerary (**P&O Voyages**)
- Two 3-night Themed cruises, one Comedy and one 80s themed
- Four 4-night Kangaroo Island itineraries
- **Main Events** include:
 - A 4-night Australia Day itinerary to Sydney (alongside White Bay Cruise Terminal)
 - A 8-night Christmas cruise to Tasmania and Kangaroo Island
 - A 12-night New Year's Eve cruise to New Zealand's stunning South Island along with a call to Hobart
 - A 4-night Tribute to the King itinerary visiting Kangaroo Island

WHAT'S NEW *from Fremantle*

Pacific Explorer returns to Fremantle in April 2024. Five roundtrip Itineraries include:

- A 10-night Western Australia cruise calling at Exmouth, Broome, Kuri Bay and scenic cruising of The Kimberley's
- A 12-night roundtrip Asia itinerary during the Western Australia school holidays calling at Komodo Island, Lombok and Bali and also an overnight call in Broome
- Two 3-night Themed Short Break itineraries, one Comedy and one 80s theme
- A 4-night Exmouth Short Break cruise
- A 10-night one-way itinerary from Fremantle, calling at Exmouth, Kuri Bay (Kimberley Coast), Darwin, Port Douglas, disembarking in Cairns
- A 19-night one-way itinerary from Fremantle to Sydney departing in June 2024 including calls to Exmouth, Broome, Kuri Bay, Scenic Cruising of The Kimberley's, Ambon, Darwin, Cairns, Airlie Beach and Brisbane



Auckland **SEASON**

From July to October 2024 Pacific Explorer returns to Auckland and will offer 15 roundtrip cruises including:

- Three 8-night Fiji Encounter cruises
- One 10-night Tongan Discovery itinerary
- Two 9-night Pacific Island Hopper cruises
- Three 10-night Discover Vanuatu departures
- A 13-night Bounty Adventure itinerary including a call to Norfolk Island
- Three 3-night themed **Short Breaks**, one Comedy, one Country and one 80s themed
- One 4-night **Short Break** cruises to Picton
- A 4-night Tribute to the King **Main Event** cruise visiting Picton

Change to Published Itineraries:

- Pacific Explorer's (X338) 4 night Picton cruise departing 8 September 2023, is now also a themed Pride cruise 🌈
- Pacific Explorer's (X346) 4-night Short Break to Picton departing 3 Nov 2023 will now also be a Main Events Tribute to the King itinerary
- Pacific Explorer's (X348) 3-night Comedy themed itinerary departing 17 Nov 2023 will now be a Country themed cruise



P&O Assurance

Allows your clients to book their next cruise with confidence

Our P&O Assurance policy is designed to provide your clients with maximum peace of mind and flexibility when booking their next P&O cruise holiday.

For cruises departing before 30 June 2022 and booked prior to 23 November 2021, **clients can now cancel their cruise up to 75 days prior to departure with zero cancellation fees and receive a full refund.**

Even if your clients change their mind at a later date, their cancellation fees will be returned to them as a Future Cruise Credit*, as long as they cancel at least 14 days before your departure date.

Days Prior to Cruise Departure That You Cancel	Cruises departing before 30 June 2022
76 days or more	Full refund
75 – 31 days	FCC*
30-15 days	FCC*
14 days or less	No Refund, No FCC**

* Future Cruise Credit to the value of any applicable cruise cancellation fee as outlined in the Booking Confirmation Document

** For cancellations during this period, the standard cancellation policy applies
Visit <https://www.pocruises.com.au/plan/how-to-book/assurance> for more details.



P&O'S HEALTHY CRUISING JOURNEY

As we continue to work towards the resumption of cruising from Australia and New Zealand, P&O Cruises Australia is the first cruise line to announce an intent to implement a vaccination only policy for crew and guests.

At P&O Cruises, the health, safety and well-being of our valued guests, loyal crew and the communities we visit is our top priority. We continue to work with some of the world's top health authorities, experts and industry bodies to develop new health protocols for when we return cruising.

You can find some of the new safety measures we are considering at pocruises.com.au/healthycruising

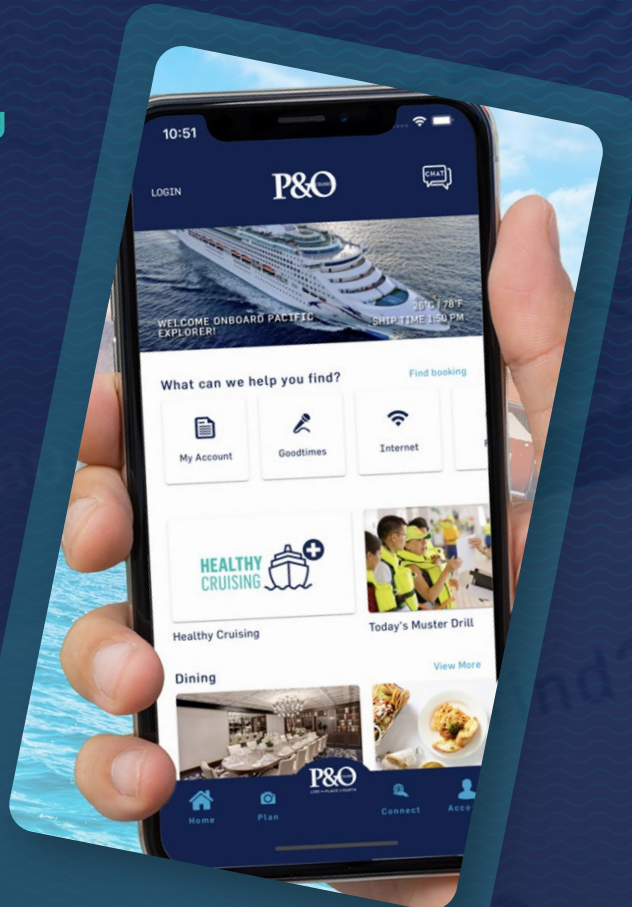


**Eligible guests refers to all guests eligible to receive a vaccination under Australian or New Zealand health guidelines*

NEW HEALTHY CRUISING INITIATIVES

ONBOARD APP

No more queues,
check your onboard
account, make dining
reservations, look at
the Good Times daily
and more!



QR CODES

Guests have the option to access menus in all
restaurants and bars using their smartphone.

Today might be

THE PERFECT TIME TO... PLAN A HOLIDAY WITH P&O

BRISBANE DEPARTURES

DATE	CRUISE	NIGHTS	ITINERARY
2023			
SEP 30	I344	3	Comedy
OCT 03	I345	10	New Guinea Island Encounter
13	I346	7	Barrier Reef Discovery
20	I347	3	Country
23	I348	7	Pacific Island Hopper
30	I349	4	Whitsundays
NOV 03	I350	8	Melbourne Cup
11	I351	3	Comedy
14	I352	4	Whitsundays
18	I353	7	Pacific Island Hopper
25	I354	7	Barrier Reef Discovery
DEC 02	I355	3	Comedy
05	I356	4	Whitsundays
09	I357	7	Pacific Island Hopper
16	I358	3	Comedy
19	I359	8	Christmas
27	I360	3	Comedy
2024			
DEC 30	I401	7	New Year's Eve
JAN 06	I402	7	Barrier Reef Discovery
13	I403	7	Pacific Island Hopper
20	I404	3	Comedy
23	I405	4	Whitsundays
27	I406	7	Barrier Reef Discovery
FEB 03	I407	7	Pacific Island Hopper
10	I408	4	Whitsundays
14	I409	10	New Guinea Island Encounter
24	I410	14	Kiwi Adventure
MAR 09	I411	3	Comedy
12	I412	4	Whitsundays
16	I413	7	Barrier Reef Discovery
23	I414	3	Comedy
26	I415	4	Tribute to the King
30	I416	7	Pacific Island Hopper
APR 06	I417	7	Pacific Island Hopper
13	I418	3	80s
16	I419	4	Whitsundays
20	I420	3	Comedy
23	I421	10	New Guinea Island Encounter
MAY 03	I422	7	Pacific Island Hopper
10	I423	3	Comedy
13	I424	12	Fiji Adventure
25	I425	7	Barrier Reef Discovery
JUN 01	I426	4	Whitsundays

BRISBANE DEPARTURES

DATE	CRUISE	NIGHTS	ITINERARY
2024			
JUN 04	X427	28	Australian Explorer
04	X427A	2	One-way Short Break to Sydney
05	I427	10	New Guinea Island Encounter
15	I428	3	Comedy
18	I429	4	Whitsundays
22	I430	7	Pacific Island Hopper
29	I431	7	Barrier Reef Discovery
JUL 02	X428	2	Short Break One-way - Comedy
06	I432	3	Comedy
09	I433	4	Whitsundays
13	I434	14	Bounty Adventure
27	I435	7	Barrier Reef Discovery
AUG 03	I436	7	Pacific Island Hopper
10	I437	4	Whitsundays
14	I438	10	New Guinea Island Encounter
24	I439	3	80s
27	I440	4	Whitsundays
31	I441	7	Barrier Reef Discovery
SEP 07	I442	3	Comedy
10	I443	4	Whitsundays
14	I444	7	Pacific Island Hopper
21	I445	7	Pacific Island Hopper

SYDNEY DEPARTURES

DATE	CRUISE	NIGHTS	ITINERARY
2023			
JUN 30	V330	8	A Taste of New Caledonia
JUL 08	V331	9	Explore the Loyalty Islands
17	V332	4	Tangalooma-Moreton Island
21	V333	3	Comedy
AUG 24	V334	10	Discover Vanuatu
03	V335	4	Moreton Island - Tangalooma
07	V336	12	Fiji Adventure
19	V337	3	80s
22	V338	10	Barrier Reef Discovery
SEP 01	V339	3	Country
04	V340	10	Discover Vanuatu
14	V341	4	Pride
18	V342	4	Hobart
22	V343	8	A Taste of New Caledonia
30	V344	9	Explore the Loyalty Islands

SYDNEY DEPARTURES

DATE	CRUISE	NIGHTS	ITINERARY
2023			
OCT 09	V345	4	Moreton Island - Tangalooma
13	V346	3	Comedy
16	V347	4	Tangalooma-Moreton Island
20	V348	15	Bounty Adventure
NOV 04	V349	6	Melbourne Cup
10	V350	3	Sapphire Coast Food & Wine Festival
13	V351	4	Tangalooma-Moreton Island
17	V352	3	Comedy
20	V353	13	Kiwi Adventure
DEC 03	V354	8	A Taste of Tasmania
11	V355	4	Tangalooma-Moreton Island
15	V356	3	Comedy
18	V357	9	Christmas
27	V358	3	Comedy
2024			
DEC 30	V401	10	New Year's Eve
JAN 09	V402	10	Discover Vanuatu
19	V403	5	Australian Open Tennis
24	V404	3	Australia Day
27	V405	3	Comedy
30	V406	14	Indonesian Explorer
MAR 03	V408	14	Indonesian Explorer
17	V409	12	Kiwi Adventure
29	V410	3	Comedy
APR 01	V411	4	Tangalooma-Moreton Island
05	V412	3	Sapphire Coast Food & Wine Festival
08	V413	4	Tangalooma-Moreton Island
12	V414	9	Explore the Loyalty Islands
21	V415	8	A Taste of New Caledonia
29	V416	4	Tangalooma-Moreton Island
MAY 03	V417	3	Tribute to the King
06	V418	4	Tangalooma-Moreton Island
10	V419	3	80s
13	V420	10	Discover Vanuatu
23	V421	3	Comedy
26	V422	12	Fiji Adventure
JUN 06	X427B	32	Australian Explorer (disembark Auckland)
06	X427C	28	Australian Explorer
06	X427D	9	Southern Explorer (disembark Fremantle)
07	V423	3	Comedy
10	V424	4	Tangalooma-Moreton Island
14	V425	3	Comedy
17	V426	10	Barrier Reef Discovery
JUL 04	X429	4	Comedy SYD-AKL

MELBOURNE DEPARTURES

DATE	CRUISE	NIGHTS	ITINERARY
2023			
DEC 04	X351	4	Tribute to the King
08	X352	7	A Taste of Tasmania
15	X353	4	Kangaroo Island
19	X354	8	Christmas
27	X355	3	Comedy
2024			
DEC 30	X401	12	New Year's Eve
JAN 11	X402	4	Kangaroo Island
15	X403	5	A Taste of Tasmania
20	X404	4	Kangaroo Island
24	X405	4	Australia Day
28	X406	13	Kiwi Adventure
FEB 10	X407	3	80s
13	X408	4	Kangaroo Island
17	X409	2	Short Break One-way to Adelaide

ADELAIDE DEPARTURES

DATE	CRUISE	NIGHTS	ITINERARY
2024			
FEB 19	X410	4	Southern Getaway
23	X411	3	Comedy
26	X412	4	Southern Getaway
MAR 01	X413	7	A Taste of Tasmania
08	X414	3	80s
11	X415	14	Kiwi Adventure
25	X416	4	Southern Getaway
29	X417	5	Southern Discovery

CAIRNS DEPARTURES

DATE	CRUISE	NIGHTS	ITINERARY
2024			
MAY 15	X424	10	Solomon Sea Islands
25	X425	7	New Guinea Island Encounter
JUN 01	X426	3	Short Break One-way to Brisbane

FREMANTLE DEPARTURES

DATE	CRUISE	NIGHTS	ITINERARY
2024			
APR 03	X418	12	Indonesian Adventure
15	X419	4	Exmouth
19	X420	3	Short Break
22	X421	10	Kimberley Coast Adventure
MAY 02	X422	3	Short Break
05	X423	10	Northern Explorer (disembark Cairns)
JUN 15	X427E	19	Northern Explorer (disembark Sydney)

AUCKLAND DEPARTURES

DATE	CRUISE	NIGHTS	ITINERARY
2024			
JUL 08	X430	9	Pacific Island Hopper
17	X431	8	Fiji Encounter
25	X432	9	Pacific Island Hopper
AUG 03	X433	13	Bounty Adventure
16	X434	3	Country
19	X435	10	Tongan Discovery
29	X436	4	Picton
SEP 02	X437	8	Fiji Encounter
10	X438	10	Bounty Discovery
20	X439	3	80s
23	X440	8	Fiji Encounter
OCT 01	X441	10	Bounty Discovery
11	X442	4	Tribute to the King
15	X443	10	Bounty Discovery
25	X444	3	Comedy

BOOKING & TRAVEL CONDITIONS

*While P&O will make every effort to position the ship in view of a total solar eclipse, this is not guaranteed.

CRUISE CODE KEY

I = PACIFIC ENCOUNTER V = PACIFIC ADVENTURE X = PACIFIC EXPLORER ▷ ONE-WAY CRUISE

PROGRAM ON SALE 13 OCTOBER 2021



CRUISE
World 

Contact Cruise World on 09 917 4440 | 0800 500 732
info@cruiseworld.co.nz | www.cruiseworld.co.nz

P&O CRUISES
LIKE NO PLACE ON EARTH™

LEVEL 5, 465 VICTORIA AVENUE, CHATSWOOD NSW 2067
POST: PO BOX 1429 CHATSWOOD NSW 2057, AUSTRALIA
WWW.POCRUISES.COM.AU/CO.NZ
FLAGSHIP.POCRUISES.COM.AU/CO.NZ
WLCL.COM.AU
EMAIL: INFORMATION@POCRUISES.COM.AU
PUBLICATION DATE: OCTOBER 2021
CARNIVAL PLC TRADING AS P&O CRUISES AUSTRALIA.
ABN 23 107 998 443. 2TA 5580.