

TURN
THE PAGE
INTO A NEW ADVENTURE

ARCTIC & ANTARCTIC

EXPEDITION CRUISES



OCEANWIDE
EXPEDITIONS

LET'S GO

TAKING YOU THERE

PIONEERS OF SHIP-BASED EXPEDITIONS. INVENTORS OF BASECAMP ANTARCTICA.
ONE OF THE FIRST COMPANIES TO TAKE TRAVELERS TO THE ARCTIC ISLAND OF SPITSBERGEN.



EXPLORING

IS WHY WE'RE HERE

OCEANWIDE EXPEDITIONS OPERATES ITS OWN FLEET OF ICE-STRENGTHENED VESSELS,
TAKING YOU DEEPER INTO THE HEART OF THE POLAR REGIONS THAN ANYONE ELSE.





UP NORTH

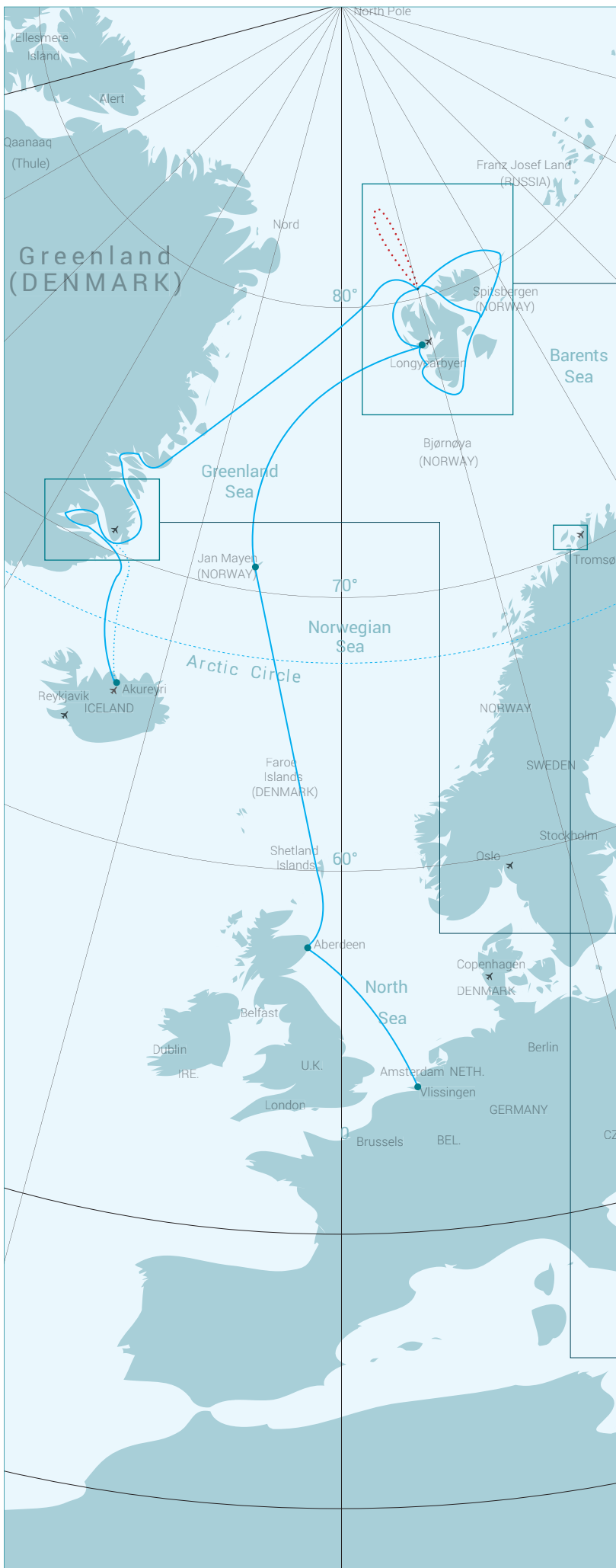
THE ARCTIC

THE MAGICAL NORTHERN LIGHTS, MAJESTIC ICE-FILLED FJORDS, THE RUGGED HUNTING GROUND OF THE MIGHTY POLAR BEAR. FEW PLACES ON EARTH SPEAK OF ADVENTURE LIKE THE ARCTIC, WHERE SOME OF HISTORY'S BRAVEST EXPLORERS TESTED THEMSELVES AGAINST NATURE'S MOST DEMANDING ELEMENTS.

From Spitsbergen (Svalbard) to Greenland to the shores of Northern Norway, we'll take you into the most iconic Arctic locations on our search for their most exotic species: humpback whales, bearded seals, Arctic foxes, reindeer, kittiwakes, walruses, and so much more.

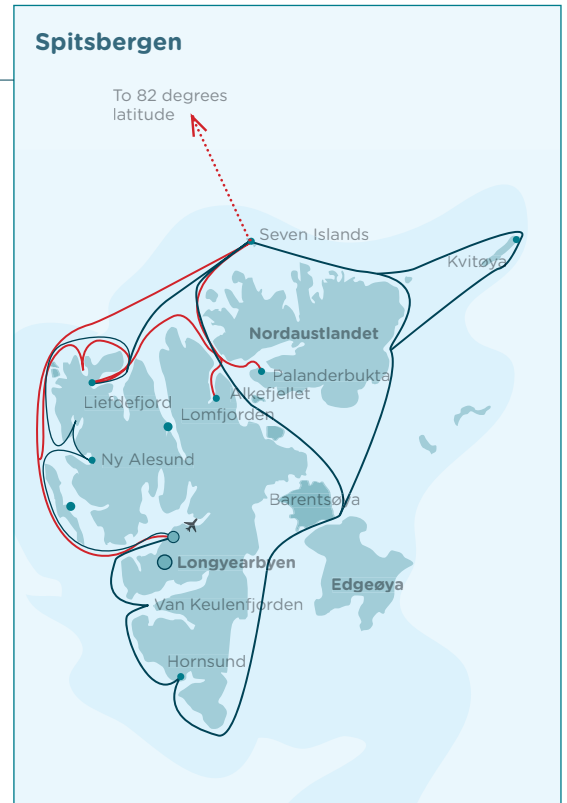
**Join us into the farthest reaches of the far north,
where adventure is just a way of life.**

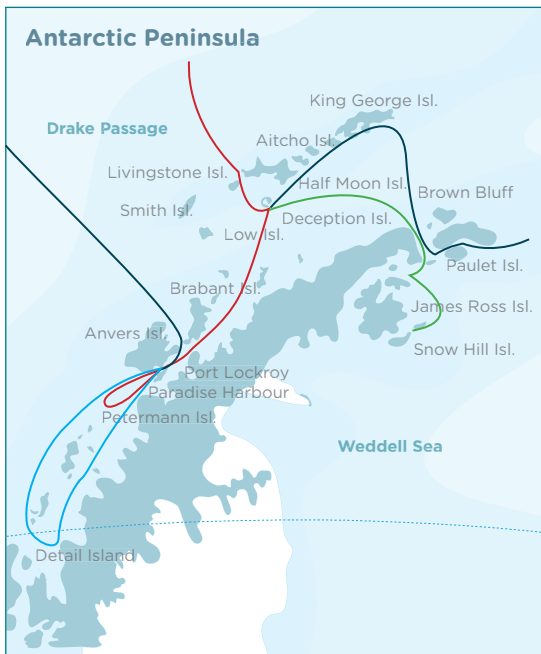




ARCTIC ROUTES (ALL YEAR ROUND)

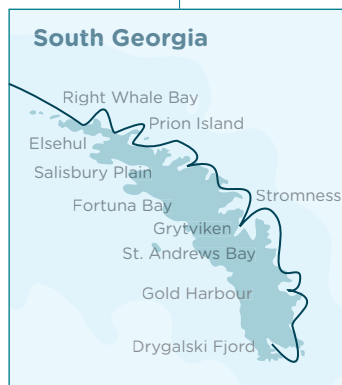
Whether we're exploring the pack ice and polar bear hotspots of Spitsbergen, the glacial shores and expansive fjords of Greenland, or the abandoned islands and aurora-lit villages of Northern Norway, our Arctic routes give you the very best of this unparalleled polar region.





ANTARCTIC ROUTES (NOVEMBER - MARCH)

Here the opportunity for adventure is virtually inexhaustible, from the wildlife-rich coastlines of the Weddell and Ross Seas to the classical penguin-viewing routes of the Antarctic Peninsula. These enchanting and sometimes seldom-seen sites grant you a rare glimpse into a vibrantly different world.





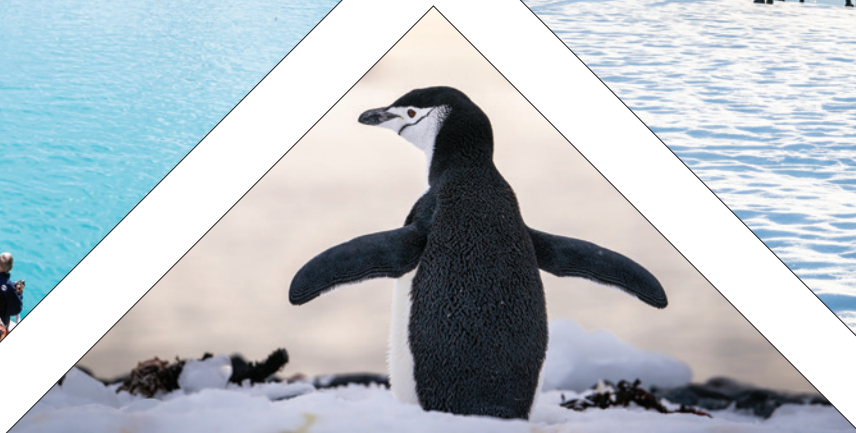
ANTARCTICA

COLOSSAL GLACIERS, PEAK-FRINGED BAYS,
COLONIES OF PENGUINS SO VAST YOU CAN'T TELL WHERE
EARTH ENDS AND THEY BEGIN. WHAT THE ARCTIC IS FOR THE NORTH,
ANTARCTICA IS FOR THE SOUTH – A SURREAL WILDERNESS
OF ICE, SEA, AND SNOW, WHERE THE DAUNTLESS SPIRIT OF DISCOVERY
LIVES ON IN ITS TITANIC, UNTAMED BEAUTY.

The Antarctic Peninsula, Ross and Weddell Seas, and the remote sub-Antarctic islands of the Falklands, and South Georgia make up this extraordinary program. Just a few of the locals you might see include blue whales, leopard seals, and more seabirds than you can count.

Come with us and explore the wildest jewel of the far Southern Hemisphere.

DOWN SOUTH





OUR ACTIVITIES



ZODIAC & SHORE PROGRAM

Guided shore excursions, walks, wildlife spotting, and Zodiac cruises are included in the trip fare and offered to all passengers on all voyages. Our emphasis is always wildlife viewing, shore landings, and outdoor activities, all of which we facilitate through the use of our Zodiacs.



HIKING

Nothing gets you closer to the polar terrain than discovering it on your own two feet. This supplemental activity provides you a pair of rubber boots for easy, moderate, and demanding hikes in the vicinity of our landing sites.



CAMPING

In Antarctica we offer open-air camping, a rare opportunity to sleep under the polar stars for a unique expedition experience. Special equipment is provided. The camping group is taken to shore after dinner and returned to the ship before breakfast.



KAYAKING

Our kayaking supplement lets you enjoy one of the most peaceful forms of polar transportation. Special kayak gear is provided, including single- and double-seat kayaks, neoprene wet suits, and life vests. A kayak guide supervises the activity, which is only offered on select voyages, and all kayakers are accompanied by a Zodiac for additional safety.





PHOTO WORKSHOP

Some voyages offer photo workshops for multiple experience levels led by an onboard photographer. Participants learn about objects, exposures, composition, and basic photography rules both on the ship and off.



MOUNTAINEERING

For those eager to enjoy the summits, we offer polar mountaineering under the leadership of a certified mountain guide. Physical fitness and proper boots are essential, though we provide basic gear: ropes, carabiners, harnesses, helmets, ice axes, and crampons.



SNOWSHOEING

When the snow is too deep for boots, snowshoes mean the difference between a grueling slog and an enjoyable polar outing. We can explore a variety of areas close to the landing sites on our snowshoes, which fit all boot sizes and are available for everyone free of charge.



POLAR DIVING

This activity is for advanced divers with sufficient cold-water, dry-suit experience. Dive leaders and guides are responsible for your safety during operation. Basic equipment is available on board (scuba tanks, compressors, weights, and other essentials), but divers must bring their own optional gear.



SKI MOUNTAINEERING

This exhilarating activity allows experienced skiers to climb and ski in absolutely breathtaking polar scenery, some of which we encounter in steep and glaciated terrain. Though potentially hazardous, our ascents and descents are always led by certified mountain guides.



HELICOPTER FLIGHTS

On specific Ortelius voyages, our two helicopters allow you to set foot in areas inaccessible by any other means. Take flight above the vast icepack of the Weddell or Ross Sea, visit rarely seen penguin colonies, and enjoy a bird's-eye-view of the incomparable Antarctic terrain.

POLAR FLEET

VESSELS, ZODIACS, AND HELICOPTERS

OUR FLEET IS OUR PRIDE AND JOY, MADE UP OF ICE-STRENGTHENED VESSELS FULLY OUTFITTED FOR BRINGING YOU SAFELY AND SWIFTLY TO THE MOST INCREDIBLE LANDING SITES IN THE POLAR REGIONS. THOUGH NOT INTENDED TO BE LUXURY VESSELS, THESE VESSELS ARE COZY AND COMFORTABLE AND FULLY STOCKED WITH THE FINEST CUISINE POSSIBLE IN THE ARCTIC AND ANTARCTICA.

On top of being some of the most structurally fortified and technologically advanced ships on the polar seas, our vessels allow you to kick back and enjoy what you really came to experience: the wondrous beauty of the polar wilderness and the wildlife that calls it home.

Observation lounge Hondius & Janssonius

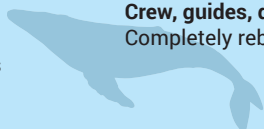


M/V PLANCIUS



Registered: The Netherlands
Length: 89 meters
Breadth: 14.5 meters
Draft: 5 meters
Ice class: 1D
Displacement: 3,211 tons

Propulsion: 3x Diesel-Electric
Average cruising speed: 10,5 knots
Passengers: 108 in 52 cabins
Crew, guides, doctor: 37 / 8 / 1
Completely rebuilt in 2009



M/V ORTELIUS



Registered: The Netherlands
Length: 90.95 meters
Breadth: 17.20 meters
Draft: 5.4 meters
Ice class: UL1 (equivalent to 1A)
Displacement: 4,090 tons

Propulsion: 6 ZL 40/48 SULZER
Average cruising speed: 10,5 knots
Passengers: 108 in 52 cabins
Crew, guides, doctor: 41 / 8 / 1
Various decks refurbished 2012-2015

NEW SHIP
COMING IN 2021



M/V HONDIUS



Registered: The Netherlands
Length: 107.6 meters
Breadth: 17.6 meters
Draft: 5.3 meters
Ice class: Polar Class 6
(equivalent 1A-Super)
Displacement: 5,590 tons

Propulsion: 2 x ABC main engines;
total 4,200 kW
Design operation speed: 15 knots
Passengers: 170 in 80 cabins
Staff & crew: 72
New build 2019



M/V JANSSONIUS



Registered: The Netherlands
Length: 107.6 meters
Breadth: 17.6 meters
Draft: 5.3 meters
Ice class: Polar Class 6
(equivalent 1A-Super)
Displacement: 5,590 tons

Propulsion: 2 x ABC main engines;
total 4,200 kW
Design operation speed: 15 knots
Passengers: 170 in 80 cabins
Staff & crew: 72
New build 2021



S/V REMBRANDT VAN RIJN



Registered: Vanuatu
Length: 49.50 meters
Breadth: 6.65 meters
Draft: 2.8 meters
Ice class: Enforced bow
Displacement: 435 tons

Propulsion: 2 Cummins / 550 KW
Average cruising speed: 6,5 knots
Passengers: 33 in 16 cabins
Crew, guides: 10 / 2
Completely refurbished in 2011



S/V NOORDERLICHT



Registered: The Netherlands
Length: 46 meters
Breadth: 6.5 meters
Draft: 3.2 meters
Ice class: Strengthened bow
Displacement: 300 tons

Propulsion: 360 hp diesel
Average cruising speed: 6 knots
Passengers: 20 in 10 cabins
Crew, guides: 4 / 1
Rerigged and refitted in 1991



OCEANWIDE
EXPEDITIONS

LET'S GO EXPLORING!



Contact Cruise World on 09 917 4440 | 0800 500 732
info@cruiseworld.co.nz | www.cruiseworld.co.nz