



**FRONTIERS
NORTH**
ADVENTURES

2021-2022

ADVENTURES

2021 & 2022 Highlights



More Ways to Experience the Aurora Borealis than Ever Before

Do you dream of seeing the northern lights? Not many people know it, but Churchill, Manitoba lies directly beneath the auroral oval, making it one of the best places on Earth to see the awe-inspiring aurora borealis! Our new Northern Lights and Winter Nights trips now offer more options to experience the northern lights than ever before!

The all-new **Northern Lights and Winter Nights Enthusiast-level** trips offer the most well-rounded adventure, with a mix of cultural and northern lights-viewing activities built in; while **Specialist-level** trips are longer duration and led by a Photo Specialist Guide to maximize opportunities for photographers. There is also a brand new, two-night **Calgary to Churchill-direct departure**, offering travellers out of Western Canada the opportunity to experience Churchill beneath the northern lights.

Learn more about these adventures on pages 12-14.



Explore Churchill's Beluga Whales with an Ocean Scientist

Join us on a new and exclusive summer tour that's equal parts adventure and education! Offered for the first time in 2021, **Conservation Journey: Beluga Whales** will take you into the Churchill River estuary among one of the World's largest summer beluga whale migrations, accompanied by an expert ocean scientist dedicated to beluga whale conservation.

Learn more about this adventure on page 19.



Experience the Ultimate Canadian Road Trip

Put yourself in the driver's seat this summer and experience Manitoba with our new **Belugas, Bears and Blooms** self-drive adventure! Journey northward from Winnipeg, Manitoba across iconic prairie farmland and through the boreal forest to Thompson, where your Frontiers North adventure begins, and catch the overnight train to Churchill—a town accessible only by plane or train. Breathe in the coastal air and wildflowers in full bloom, listen to beluga whale-song and try to spot a polar bear! Flexible enough for families and adventurous solo travellers, this itinerary includes two-way train fare and options to add additional activities during your stay.

Learn more about this adventure on page 18.



Contents

Adventure Map	1
Add to your Adventure	26
Custom Group Adventures	28
Meet Our Team	31

Get To Know Us

Why Frontiers North Adventures	3
Sharing Polar Bears with the World	4
The Official Tundra Buggy	5
The Tundra Buggy Lodge	7

Find your Inspiration

Wildlife Guide	6
Seasons of Churchill	9
Choose your Adventure	10

Our Adventures

Winter	11
Northern Lights and Winter Nights	
Northern Lights and Winter Nights – Calgary-Churchill Direct	
Summer	15
Riding Mountain Adventure	
Frontiers North's Big Five Safari	
Belugas, Bears and Blooms	
Conservation Journey: Beluga Whales	
Autumn	21
Churchill Town and Tundra Experience	
Tundra Buggy Lodge at Polar Bear Point	
Conservation Journey: Polar Bears	

Unique Experiences

Churchill's Spectacular Northern Lights	14
Frontiers North's Family Adventures	20
Take the Train to Churchill	27

More Adventures

Grizzly Bears of the Great Bear Rainforest	
Arctic Expedition Cruises	

Rates and Dates

Where We Travel Matters

With over 30 years experience leading wildlife adventures, we've learned a thing or two about selecting destinations that we believe represent the incredible beauty of Canada and the North.

Travelling into these extraordinary corners, we take our guests into areas where wildlife, culture and history come alive and the stunning landscapes leave an impression that will not be forgotten.



Churchill Wildlife Management Area

Situated along the coast of the Hudson Bay, the Churchill Wildlife Management Area (CWMA) is at the intersection of three distinct eco-zones: arctic marine, subarctic tundra and boreal forest. Hop aboard an official Tundra Buggy as it takes you to Polar Bear Point at the heart of the CWMA. Polar Bear Point lies directly within the migratory path of one of the largest polar bear populations in the world. Learn more about adventures including a Tundra Buggy excursion on pages 11-24.



Riding Mountain National Park

Explore the bold boreal forests, expanses of meadows and lakes, lofty heights and deep gorges of the Manitoba escarpment. Home to moose, black bear, a captive bison herd and other incredible wildlife, Riding Mountain National Park shows off Manitoba's wild side. Learn more about our adventures in the area on pages 16-17.



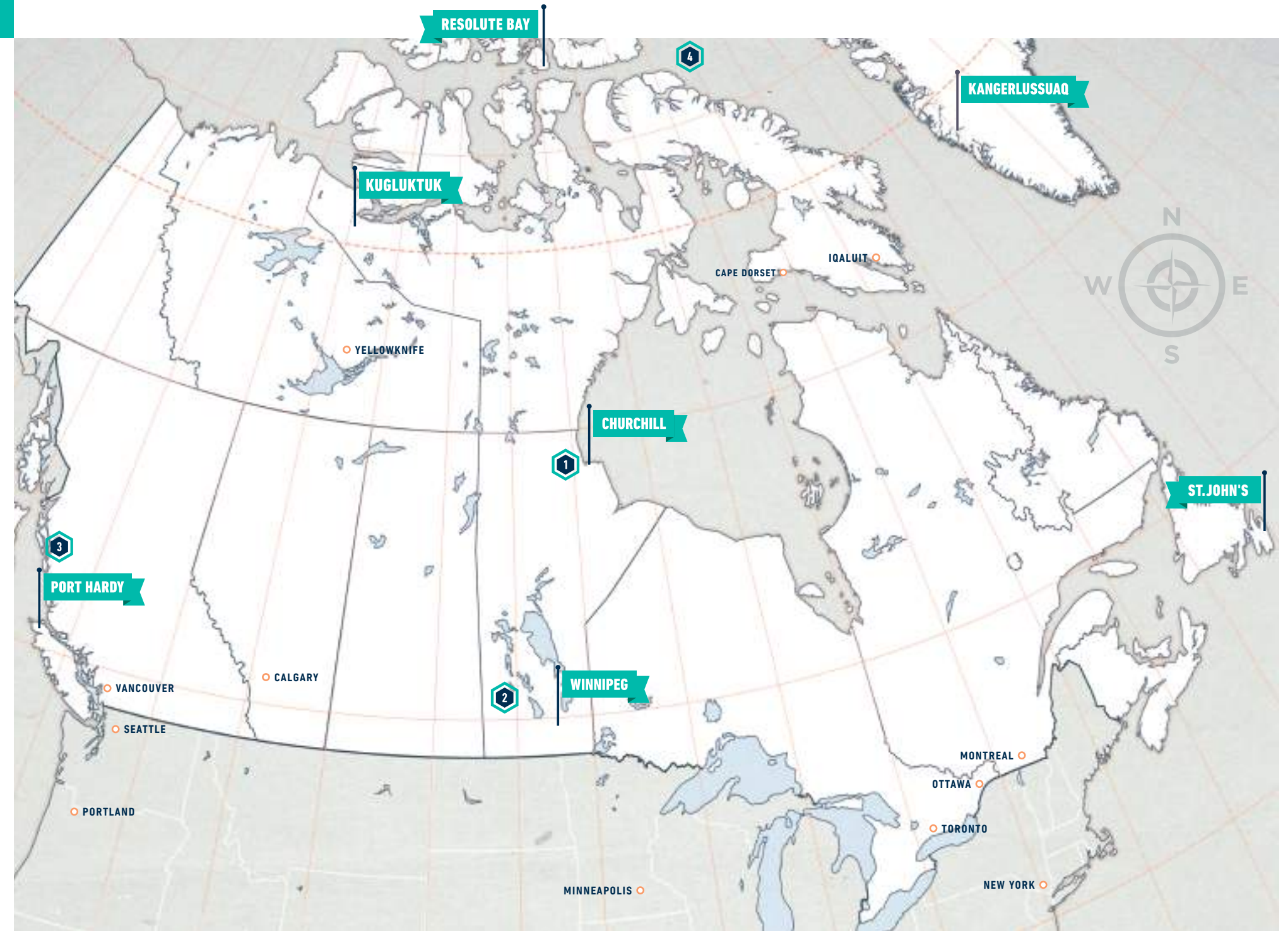
Great Bear Rainforest

An emerging destination for wildlife viewing and ecotourism, there are no roads to this rugged coastline on Canada's west coast. Home to bears, wolves and whales, enjoy exploring one of Earth's last great wild places on foot and by boat, taking in its culture and natural history along the way. This place of spectacular beauty is home to Great Bear Lodge, a fully self-contained floating lodge situated in an outstanding wildlife viewing location. Learn more about this incredible experience on page 29.



Northwest Passage

For centuries, the Northwest Passage has been thought of as a pinnacle of northern exploration. Even today, few venture into this remote route through Canada's Arctic. The passage takes you along the shores of islands sparse in human inhabitants but teeming with wildlife and natural wonders. Learn more about this incredible journey cruising through Canada's North on page 30.



Why Frontiers North Adventures



WE ARE TOURISM LEADERS

We are an award-winning and internationally known leader in Canada's eco-tourism industry and have been recognized by the Tourism Industry Association of Canada as one of the top three sustainable tourism operators in Canada. We are proud that our Frontiers North Tundra Buggy Adventure was hailed as a quintessential Canadian tourism experience by Destination Canada, and was awarded Signature Experience status.

PASSIONATE, PROFESSIONAL GUIDES

Our world-class guides and drivers offer a wealth of knowledge and experience. Chosen for their expertise, our enthusiastic and engaging team will make sure you leave having had the adventure of a lifetime.

KEVIN
Tundra Buggy Driver since 1991.



Our purchasing policy ensures

we source local, Indigenous and suppliers that support social and environmental responsibility.

We donate
2% of pre-tax profits
to social causes.

3,780

By eliminating disposable water bottles from our tours, **we prevent the waste of approximately 3,780 plastic bottles per year.**

EXCLUSIVE ACCESS

We work tirelessly to meet standards set by Manitoba Conservation and Climate and Parks Canada, which allows us to take guests into places where only we can go, offering unparalleled experiences. We hold the most permits to operate on the Churchill Wildlife Management Area trail network. We have an impeccable safety record and hold all the necessary permits that allow our guests to travel with peace of mind.



98% We're proud to report a 98% satisfaction rate among our guests.

WE'RE COMMITTED TO CONSERVATION AND SUSTAINABILITY

Our commitment to sustainability starts with a deep appreciation of the fragile environments in which we operate, and our good fortune in being afforded rare access to special places we can share it with our guests.

Our approach to social responsibility involves three core areas: Environmental Stewardship, Caring for People and Community Involvement.

B CORP ACCREDITATION

We are a company that strives to be a force of good, which is why we are B Corporation accredited. This means we work hard to leave a positive impact on our travellers, on our employees and on the communities where we operate. To achieve this certification, we constantly review our environmental track record and goals, ensure transparency in our self-reporting, and balance our profits with social and environmental good.

Certified



Corporation

This company meets the highest standards of social and environmental impact

30+ YEARS

FRONTIERS NORTH ADVENTURES is a family-owned and -operated business that has been specializing in adventures to Canada's north for over 30 years. Our programs are designed for guests with specific interests in experiential travel, photography, wildlife, culture and adventure. Since day one, we have built our business working closely with the communities and locals within the communities we visit. It's these relationships that make the difference between a cool vacation and an amazing, authentic and intimate adventure.

Sharing Polar Bears with the World



We bring guests to incredible corners of Canada's North so they can experience firsthand the history, culture and wildlife of a part of the world that not many people will have the chance to see. We take responsibility to not only ensure we are travelling sustainably in these fragile ecosystems, but also to inspire and educate people around the world to be passionate about the North and everyone – and everything – that lives here. It is this responsibility that has fuelled our partnership with Polar Bears International.

Polar Bears International (PBI) is the world's leading polar bear conservation group, dedicated to saving polar bears by saving their habitat. Since 2002, Frontiers North has been a Platinum sponsor of PBI and through this partnership we have collaborated on a number of projects intended to inspire people all over the globe.



DID YOU KNOW?

A portion of your tour cost goes toward Polar Bears International in support of its programs and conservation efforts.

For more information about our partnership with PBI visit frontiersnorth.com/polarbearsinternational

TUNDRA BUGGY ONE

Tundra Buggy One is a mobile broadcast and research centre we created exclusively for PBI's use. Buggy One is outfitted with tools and equipment that enable polar bear scientists to study bears and broadcast live webcasts and video from the remote tundra, sharing up-to-date information on Churchill's polar bears with audiences around the world.

1.5 mil

views of polar bear content via Tundra Buggy One's live feeds in 2019.



424

guests experienced presentations by PBI's polar bear species experts at our Tundra Buggy Lodge in 2019.



TUNDRA BUGGY LODGE

During October and November, PBI researchers and scientists use Frontiers North's Tundra Buggy Lodge as their in-field headquarters. Guests staying at the Lodge have the chance to meet and mingle with polar bear experts each night and enjoy informative evening presentations.

TUNDRA CONNECTIONS®

Every fall, PBI conducts live, free broadcasts — webcasts, live chats, and Google Hangouts on air — from Tundra Buggy One during the polar bear migration in Churchill. Each week focuses on a different theme, tapping into the expertise of guest panelists. Viewers are able to see wild polar bears, meet experts, ask questions and receive answers in real time.

175,304

individuals viewed live Tundra Connections webcasts in 2019, including classrooms (from pre-K to university), zoos and the public.

702

Frontiers North guests met a PBI ambassador on their Tundra Buggy in 2019.

FIELD AMBASSADOR PROGRAM

Each year the PBI Field Ambassador program selects three to four zoo professionals to join their team in Churchill. With support from their zoos, these volunteers donate two weeks each year for two years to share their knowledge about polar bears and climate change with tourists on board nearly 46 Tundra Buggy tours each year.



The Official

Tundra Buggy

Established in 1979, it was the creation of the original tundra vehicle, the Tundra Buggy, that ignited adventuring amongst polar bears in Churchill. Today, Frontiers North carries on that spirit of leading the way.

Specially designed for the northern landscape, these all-terrain vehicles enable us to take guests to the best locations in the Churchill area to safely experience wildlife and the phenomenal northern lights. No other company can boast the extensive and exclusive access that Frontiers North has.

Venturing on a network of established trails in the Churchill Wildlife Management Area (summer and autumn), the Tundra Buggy takes our guests to the heart of polar bear country, where bears and other

subarctic wildlife roam. During the winter, we are the only company to travel across the frozen Churchill River, far from the lights of town, to the Thanadelthur Lounge and Dan's Diner to view the incredible northern lights.

Frontiers North holds the most permits to operate in these protected areas, offering our guests superior access to amazing northern landscapes and wildlife.



17

Tundra Buggies are in our fleet.

12

of 18 permits are held by Frontiers North to travel on the trail network in the Churchill Wildlife Management Area (CWMA).

33

kilometres (20 mi) of trails are accessible to Frontiers North in the CWMA.

45

kilometres per hour (28 mph) is the top speed a Tundra Buggy can reach.

Wildlife Guide

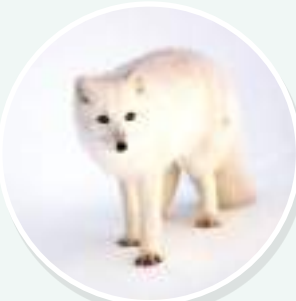
The province of Manitoba is home to a multitude of incredible creatures, making it the perfect place for a truly Canadian wildlife experience. Here are just a handful of the animals you could see when you travel with us.



POLAR BEAR There are approximately 1,000 polar bears in the Western Hudson Bay population, and the Churchill Wildlife Management Area (CWMA) hosts the largest concentration of bears in the area. Here bears spend their days lazing on the coast, sparring and playing as they await the forming of their sea ice hunting ground.



BELUGA WHALE There are approximately 55,000 beluga whales in the Hudson Bay population. An estimated 4,000 beluga whales spend their summer in the warm, fresh water of the Churchill River, giving birth and feeding on small fish. Belugas, known as the "canaries of the sea", are natural mimics and emit squeaks, pops, whistles and chirps in order to communicate with other whales around them.



ARCTIC FOX Arctic fox can be seen in the Churchill area year round, but have a habit of changing their colour to suit the season. In the summer their fur is brownish-grey, and in the autumn and winter their fur turns white to blend into their snowy surroundings.



RED FOX A variety of colour variations exist within the red fox population in the Churchill area. While the best known is perhaps the well known reddish hue, a cross fox is a colour variant which has a long dark stripe running down its back, intersecting another stripe to form a cross over the shoulders. A silver fox is yet another colour variation which tends to be mostly black or blue-grey with a white tip on its tail.



BISON Riding Mountain National Park (RMNP) is home to the Lake Audy Bison Enclosure, which houses a captive herd of 40 plains bison. Once near extinction in the area due to hunting, this herd's reintroduction into the area is the first step in restoring and protecting the prairie ecosystem.



BLACK BEAR Widely considered one of the top black bear destinations in North America, Manitoba is home to dense black bear populations throughout the majority of its regions, including RMNP. Despite their name, black bears are not always black – they can also be light brown, blond or even grey-blue.



MOOSE An enduring symbol of the Canadian outdoors, moose are plentiful in RMNP. The park's moose population is estimated at roughly 3,000 individuals. Moose calves are generally born in the spring, so at the peak of the summer season these leggy youngsters can be expected to weigh 109 kilograms (240 lbs) at just three months of age!

The Tundra Buggy Lodge

The Tundra Buggy Lodge, located in the heart of polar bear country, offers a unique, immersive experience where guests can fall asleep and wake up with polar bears right outside their window. Situated far from town within the Churchill Wildlife Management Area (CWMA), the lodge is also an optimal spot for northern lights viewing opportunities at night.

Our Tundra Buggy Lodge consists of two accommodation units, a lounge with skylights and a rooftop observation deck, a dining hall and staff quarters. Outdoor viewing platforms connect each unit and allow for outdoor photography.



"Imagine yourself in the middle of nowhere, surrounded by the vast tundra landscape... and polar bears."



- 1. Sleeping quarters
- 2. Northern lights above the lounge
- 3. Seating for supper time
- 4. Lounging in the evening
- 5. Welcome to Dan's Diner
- 6. Bears at play
- 7. Rooftop observation deck

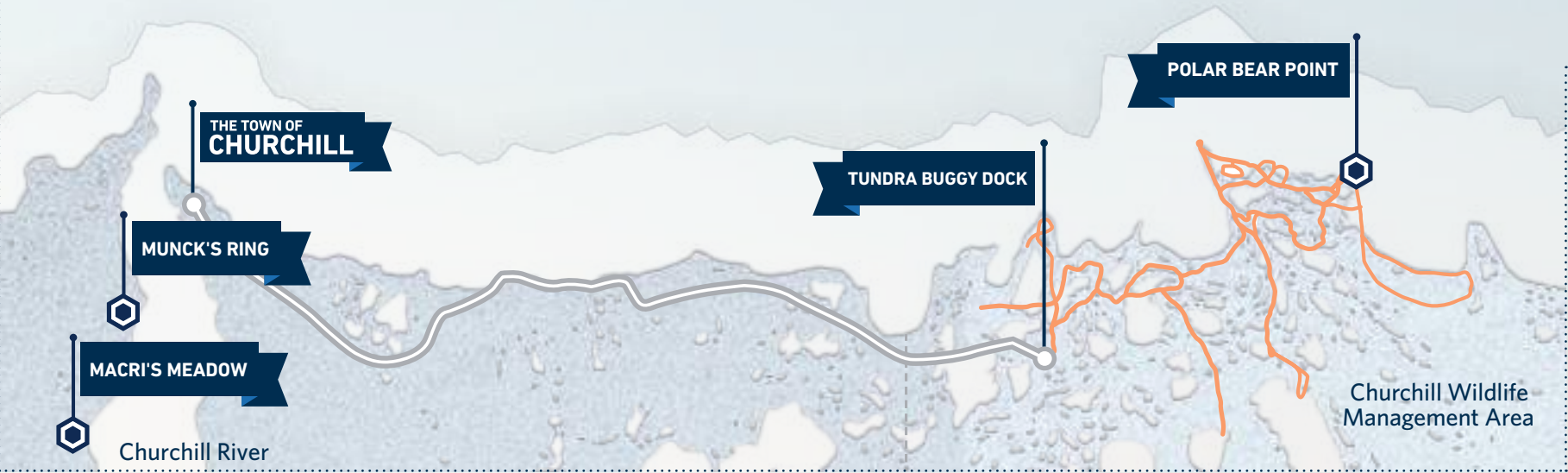
It's All About Location

The benefit of a lodge on wheels is that we can provide the best viewing access for our guests by positioning the Tundra Buggy Lodge in different locations throughout the seasons.

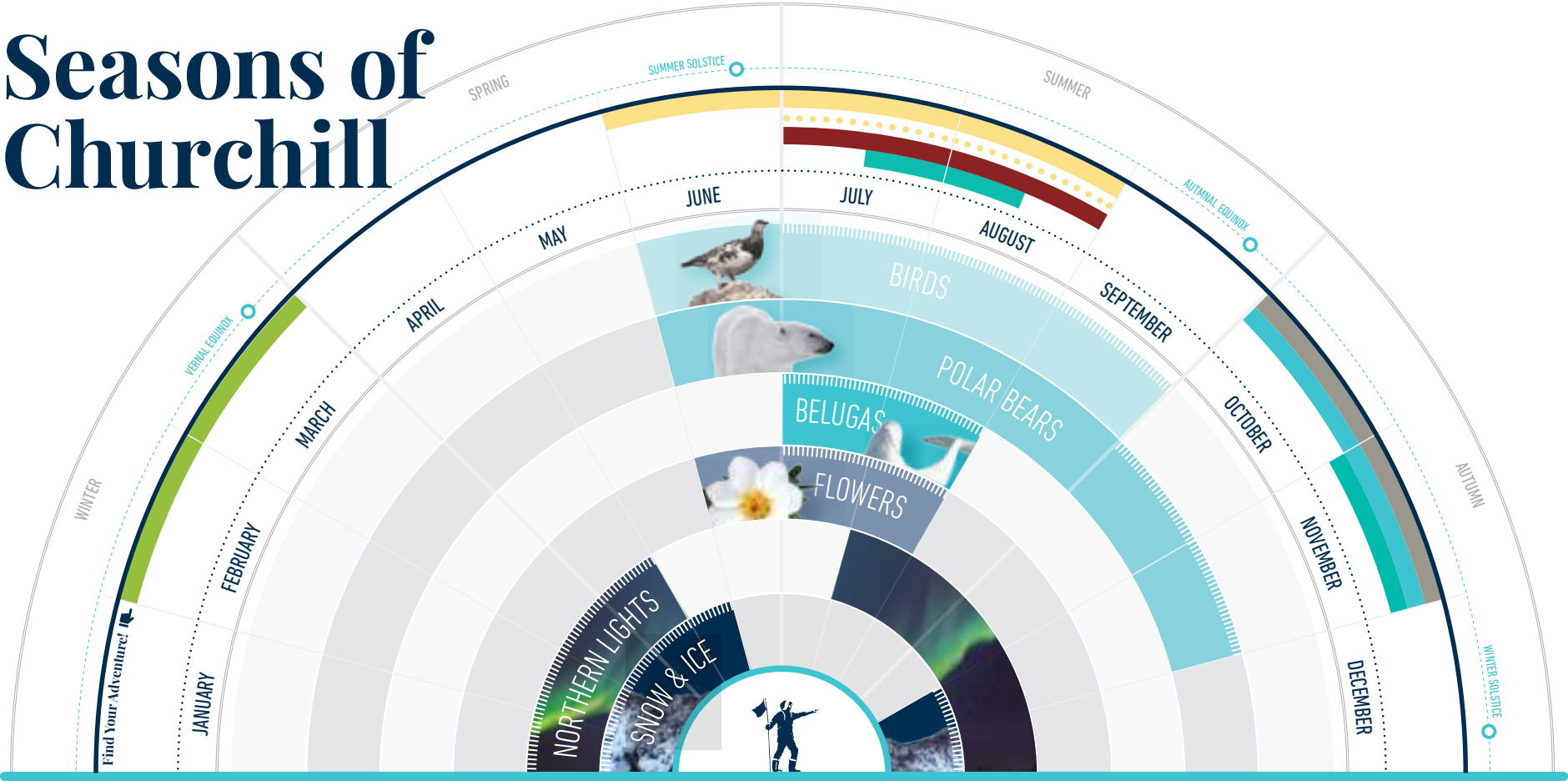
Polar Bear Point (autumn)
During the autumn, the Tundra Buggy Lodge is located at Polar Bear Point on the coast of the Hudson Bay in the CWMA. It is around this area that we see the highest density of polar bears in October and early November as they await the freezing of the bay.



Munck's Ring and Macri's Meadow (winter)
In February and March, during peak northern lights season, we transport our guests by Tundra Buggy across the frozen Churchill River to our exclusive Thanadelthur Lounge and Dan's Diner, strategically placed in historically significant spots along the riverbank, far from the lights of town for optimal northern lights viewing. Guests can view the dancing skies through panoramic windows and skylights, climb onto the lounge's rooftop observation deck for a completely unobstructed view or descend directly onto the river to watch and photograph the lights from below, weather permitting.



Seasons of Churchill



You may know Churchill as the Polar Bear Capital of the World, but as the saying goes, great things come in threes! This remote community of 900 people is also the Beluga Whale Capital of the World and is regarded as one of the best places on Earth to see the northern lights!

The best times to see Churchill's incredible wildlife and northern lights varies throughout the year. October and November are the best time to see **polar bears** roaming the wild tundra; July and August are the best time to see **beluga whales** frolicking in the Churchill River; and February and March are the best time to see the **northern lights** illuminating the vast night sky.

Find Your Adventure!

NORTHERN LIGHTS & WINTER NIGHTS
February - March
SEE PG. 12 FOR DETAILS

RIDING MOUNTAIN ADVENTURE
June - August
SEE PG. 16 FOR DETAILS

FRONTIERS NORTH'S BIG FIVE SAFARI
July - August
SEE PG. 17 FOR DETAILS

BELUGAS, BEARS & BLOOMS
July - August
SEE PG. 18 FOR DETAILS

PEAK SEASON / BEST VIEWING TIMES

CONSERVATION JOURNEY: BELUGA WHALES
July - August
SEE PG. 19 FOR DETAILS

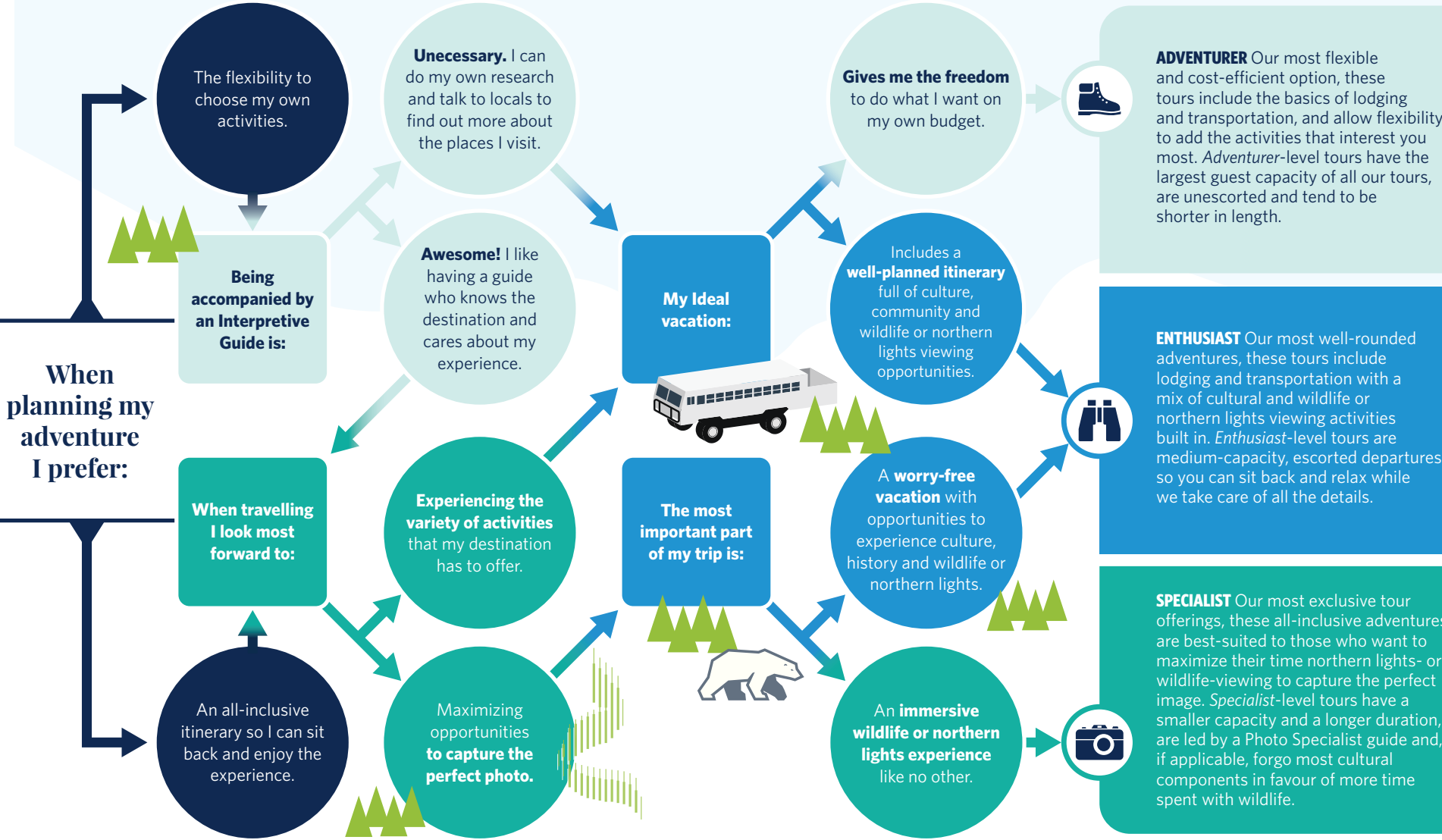
CONSERVATION JOURNEY: POLAR BEARS
November
SEE PG. 24 FOR DETAILS

CHURCHILL TOWN & TUNDRA EXPERIENCE
October - November
SEE PG. 22 FOR DETAILS

TUNDRA BUGGY LODGE AT POLAR BEAR POINT
October - November
SEE PG. 23 FOR DETAILS

Choose your Adventure...

What is your travel type? Frontiers North's adventure levels are based on the capacity, length and inclusions of each tour, allowing us to cater to different types of travellers. Finding your ideal adventure starts here!



Winter

Located directly beneath the auroral oval, Churchill is one of the best places on Earth to witness the awe-inspiring northern lights. Long, dark winter nights provide the perfect setting for northern lights photography.

Travellers visiting Churchill in the winter enjoy outdoor activities such as dog sledding and snowshoeing through the boreal forest. In the evenings, adventurers board a Tundra Buggy and head far away from the lights of town to view the aurora borealis in all its glory from the comfort of Thandelthur Lounge or Dan's Diner, our remote culinary experience.

Average temperature:
-24°
-27° C to -20° C
(-13° F to -3° F)

Average hours of daylight:
14 hours
8 to 13 hours/day

When to go:
**FEBRUARY
MARCH**

5 things we love about winter

1. Laying down on the frozen Churchill River as the northern lights dance above.
2. The crunch of the snow beneath our snowshoes as we explore the boreal forest.
3. Holding a warm mug of hot cocoa after an exciting dog sled ride.
4. The breathtaking view of ice stretching endlessly across the frozen Hudson Bay.
5. When the sun's rays hit the ice crystals in the air just right, creating beautiful "sun dogs".



@ABBY MATHESON

@JESSICA BURTHICK

@DAN HARRIS

@MIKE GERE

@COLLEEN NIKI

@HEIDI DEN HAAN

@ABBY MATHESON

Northern Lights and Winter Nights

February & March



Churchill is located directly beneath the auroral oval, making this northern town one of the best places on Earth to witness the awe-inspiring northern lights.

Frontiers North's Northern Lights and Winter Nights adventure, led by an experienced guide, offers you the opportunity to witness this incredible night-sky phenomenon from the tundra. Surround yourself in beautiful northern landscapes as we travel to a new and secluded location each night for incredible aurora viewing and photography opportunities!

By day, you'll experience the history and culture of this unique northern community with a snowshoeing adventure, an exhilarating dog sled ride through the boreal forest, a tour of the local Itsanitaq Museum and more!



This adventure includes an evening at Dan's Diner, an exclusive culinary experience on the frozen banks of the Churchill River. dans-diner.com

This departure can be experienced at the

Ignite your imagination with an adventure beneath the aurora borealis. See available dates on pages 34 & 38.

NEW **ENTHUSIAST LEVEL**

SPECIALIST LEVEL

Learn more on page 10.

CALGARY-CHURCHILL DIRECT

VIA RAIL

— ASK US ABOUT —

NEW

Northern Lights and Winter Nights

CALGARY-CHURCHILL DIRECT

March



Witness one of the seven natural wonders of the world in Churchill, Manitoba. Located directly beneath the auroral oval, this remote community of 900 people is regarded as one of the best places on Earth to experience the dazzling aurora borealis. Here, small tour groups make for an intimate and authentic northern lights experience, with exclusive access to Frontiers North's Thanadelthur Lounge, the Dan's Diner culinary experience and snowshoe trekking in the boreal forest.

For the best aurora viewing and photography opportunities, we head far away from the lights of town to view the aurora borealis in all its glory from extraordinary locales, travelling to a new and secluded location each night. Imagine being able to step out onto the tundra and feel tiny against the never-ending sky, enveloping you in Mother Nature's most spectacular light show.

Escorted by a Frontiers North representative, our Northern Lights and Winter Nights - Calgary-Churchill Direct adventure offers a unique program in which travellers can fly directly from Calgary, Alberta to Churchill, Manitoba to experience the dancing skies and the incredible culture of Canada's North.



This adventure includes an evening at Dan's Diner, an exclusive culinary experience on the frozen banks of the Churchill River. dans-diner.com

This departure can be experienced at the



**ENTHUSIAST
LEVEL**

Ignite your imagination with an adventure beneath the aurora borealis. See available dates on pages 34 & 38.

Learn more on page 10.



©MIKE GERE

Churchill's Northern Lights Among the Best on Earth

You may be wondering what makes Churchill different from other northern lights-viewing destinations. Churchill's proximity to the auroral oval means there is northern lights activity year-round here; combined with the town's isolated location and low-light pollution, clear winter air in the months of February and March opens up the northern sky for some of the best aurora borealis-viewing opportunities on our planet, attracting travellers from around the World to see one of Mother Nature's greatest wonders.

Each night you will travel to a new location to experience the breathtaking northern lights, including Dan's Diner, a pop-up restaurant in the wilderness reserved exclusively for Frontiers North Adventures' guests.

**CAN YOU ENVISION YOURSELF ON A NORTHERN LIGHTS AND WINTER NIGHTS ADVENTURE?
SEE PAGES 34 AND 38 FOR DATES.**

©COLE MOSZYNSKI

Summer

Churchill in the summer is a beautiful thing: beluga whales by the thousands, hundreds of migratory bird species, a veritable rainbow of flowers in full bloom and, yes, even the possibility of seeing polar bears.

You can experience Churchill's beluga whales in a variety of ways: boat or Zodiac tour, self-propelled kayak, or get a closer look right on the water on a paddleboarding adventure. On land you can peruse the cultural museums, experience dog carting and explore the colourful flora and amazing fauna of the Churchill Wildlife Management Area on a Tundra Buggy adventure.

5 things we love about summer

1. The incredible variety of colourful flowers and delicious berries that cover the tundra landscape.
2. The chance to see adorable arctic fox kits emerge from their den to play.
3. Fat, healthy polar bears rolling in the cool waters of the Hudson Bay.
4. Small, grey baby beluga whales swimming alongside their moms in the Churchill River.
5. Exploring the history of Prince of Wales Fort National Historic site which only has tours at this time of year.

Average temperature:
11°
10° C to 12° C
(51° F to 54° F)



Average hours of daylight:
16 hours
14 to 18 hours/day



When to go:
**JULY
AUGUST**



Riding Mountain Adventure

June, July & August



Riding Mountain National Park (RMNP) is a diverse and enthralling wilderness that is home to some of Manitoba and Canada's most iconic wildlife.

This 3,000 sq. km. park atop the Manitoba Escarpment protects three ecosystems: the grasslands, upland boreal and eastern deciduous forests. Home to rolling valleys as well as numerous rivers and lakes, the park is renowned for its stunning landscapes and pristine waterways, particularly the sandy beaches of Clear Lake.

Embark on daily wildlife safari drives in search of black bear, moose, wolf, lynx, deer and other Canadian wildlife. Visit the Lake Audy Bison Enclosure, home to a captive herd of 40 plains bison, and learn about the reintroduction of these once absent mammals back into their native prairie land.

Get to know the charming town of Wasagaming located on the south shore of Clear Lake on a picturesque walk, where you can explore provincial heritage sites, shops and restaurants.

This departure can be experienced at the



Venture through the rugged and beautiful heart of Manitoba in search of its wondrous wildlife. See available dates on pages 34 & 39.

Learn more on page 10.

Frontiers North's Big Five Safari

July & August



Experience the spectacular wildlife of Manitoba with an adventure from the dense forest of Riding Mountain National Park, to the colourful tundra of Churchill. Our one-of-a-kind Big Five Safari is a salute to the incredible array of megafauna that populate the forests, prairies, tundra and waters of this beautiful province.

Your journey begins in Winnipeg, the geographic centre of North America. Travel overland to Riding Mountain National Park where the boreal forest, meadows and lakes, lofty heights and deep gorges of the Manitoba Escarpment are home to moose, black bears, a captive bison herd and more. Enjoy daily wildlife drives to photograph the amazing wildlife and landscapes of the area.

Next, fly north to Churchill, where the boreal forest gives way to the rugged tundra and northern waterways. Set out by boat and Zodiac amongst inquisitive beluga whales and explore the Churchill Wildlife Management Area in search of the majestic polar bear.

This departure can be experienced at the



Learn more on page 10.

Frontiers North's Big Five Safari will leave you in awe of Manitoba's biodiversity. See available dates on pages 34 & 39.



©HANDCRAFT CREATIVE



©ZHANG YONGFENG

DRIVE AND VIA RAIL



FAMILY ADVENTURE



— ASK US ABOUT —

Belugas, Bears and Blooms

July & August



Summer is the perfect time to visit Churchill. During the months of July and August, the Churchill River is teeming with beluga whales who migrate into the warm, shallow waters to give birth and feed on fish. Known as the "canaries of the sea", these friendly and inquisitive creatures will capture your heart as you enjoy their whale song by boat and Zodiac or, for the more adventurous, in the water with a kayak or stand-up paddleboard adventure.

While on land, enjoy the view as the surrounding landscape erupts into colourful summer blooms. You will experience a dog carting excursion with a professional musher on a mile-long trek through the boreal forest and explore the Churchill Wildlife Management Area by Tundra Buggy for your chance to see a multitude of northern wildlife. You might even have the opportunity to see the first of the summer polar bears as they begin their migration into the area.

This departure can be experienced at the



Learn more on page 10.



This unique summer experience will leave you in awe of the beauty of Canada's northern summer. See available dates pages 35 & 38.

NEW

Conservation Journey: Beluga Whales

Late July / Early August



New in 2021, this exclusive tour combines field education and adventure to create a unique opportunity to experience Churchill's coastal waters with a leading beluga whale researcher and ocean scientist.

Venture into the Churchill River estuary, where thousands of beluga whales migrate into the warm, shallow waters each summer to give birth and feed. Learn about beluga whale biology and ocean health, come face-to-face with beluga whales in their natural habitat and engage with researchers studying the behaviour and vocalizations of Churchill's beluga whales.

Join us to see firsthand the work that is being done and learn how you, too, can help protect beluga whales and our oceans for generations to come.



Partial proceeds from Conservation Journey: Beluga Whales will support Ocean Wise, a global ocean conservation organization.

This departure can be experienced at the



Learn more on page 10.

This educational adventure is best-suited for individuals with a keen interest in science and conservation. See available dates pages 35 & 38.



©BELINDA FITZPATRICK

Frontiers North's Family Adventures

Inspire the young adventurers in your life on an epic family vacation that encourages exploration! Our Summer and Autumn Family Adventures showcase the best Churchill has to offer with a host of family-friendly activities. In Summer, you'll cruise down the Churchill River while listening for the squeaks of beluga whales, and in Autumn, you'll search for polar bears aboard a Tundra Buggy in the Churchill Wildlife Management Area!



©BRIAN WILSON

FAMILY ADVENTURES ARE SURE TO THRILL TRAVELLERS OF ALL AGES, WITH SPECIALIZED PROGRAMMING FOR CHILDREN AGE 12 AND UNDER. LEARN MORE ON PAGES 18 AND 22.

1 New for families: Who's up for a road trip?

Hit the open road on a family adventure for all ages! Explore Manitoba from end-to-end with our new *Belugas, Bears and Blooms Drive and VIA Rail* adventure! Our itineraries and maps will guide your family north from Winnipeg, Manitoba's capital city, to Thompson where you will catch the overnight train to your final destination: Churchill, Manitoba. Sing with beluga whales and try to spot a polar bear on this new and flexible family adventure!

3 Get close and personal to beluga whales in summer

Imagine cruising down the river when a cheery-looking beluga nudges your boat, almost as if it wants to play. Then you realize there's a whole pod of whales surrounding you! Each summer, the Churchill River estuary is home to one of the largest, most accessible concentrations of beluga whales in the World! You can even rent a kayak or paddleboard* to get even closer! It's sure to be a wildlife experience your kids will never forget. See it for yourself on our *Belugas, Bears and Blooms* Family Adventure.

2 Experience the rich Indigenous culture of Churchill

Show your family a part of the World rich in Indigenous history and culture. Our Family Adventures include programs that share Churchill's proud northern culture, including: dog sledding or carting with a local Métis musher, a visit to the Parks Canada Visitor Centre where you'll learn about the history of Churchill, free time to explore the Itsanitaq Museum, home to one of Canada's finest Inuit collections and more! Your young ones will also get a kick out of Churchill's large indoor playground and colourful SeaWalls murals throughout town.

4 Search for wild polar bears on a Tundra Buggy in autumn

Is your family full of animal lovers? How does a trip to the Polar Bear Capital of the World sound? Every Autumn, hundreds of polar bears gather in the Churchill region to await the freeze-up of Hudson Bay, making them the most accessible wild population of polar bears on Earth! On our *Churchill Town and Tundra Family Adventure*, your family will spend two days adventuring on a Tundra Buggy in search of land's largest carnivore. It's a wildlife encounter few people have the chance to experience, making it an extraordinarily special family memory!

*Age restrictions may apply

Autumn

It's all about the polar bears during autumn in Churchill. Enjoy the beautiful colours of autumn on the tundra in October or visit in November to see the Hudson Bay coast draped in ice and snow.

Our autumn Tundra Buggy excursions offer guests the unique opportunity to explore where polar bears and other arctic wildlife roam. These excursions are the best and safest way to view the majestic polar bear in its natural environment. Guests travelling to Churchill in the autumn also enjoy cultural components such as dog sledding and museum visits.

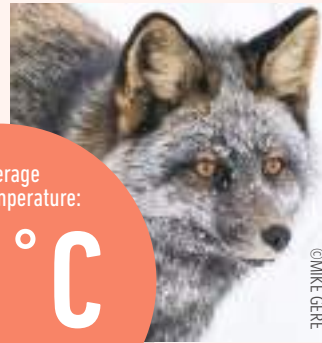
5 things we love about autumn in Churchill

1. The excitement of experiencing arctic wildlife for the first time.
2. The joy of spotting a camouflaged arctic critter hidden amongst the willows and rocks of the tundra.
3. Experiencing the transformation of the landscape from the warm, autumnal tones of October to the cool, wintry whites of November.
4. Sharing in Canada's North with new friends from all over the world.
5. Watching a polar bear lumber across the tundra, backlit by the warm glow of a Manitoba sunset.

Average temperature:
-8°C
-13°C to -2°C
(9°F to 29°F)

Average hours of daylight:
9 hours
7 to 11 hours/day

When to go:
**OCTOBER
NOVEMBER**



©MIKE GERE



©DEREK KOSTALL



©DMITRY CHERKASOV



©DMITRY CHERKASOV



©TEA NEAL



©RICHARD DAY



©MICHELLE WALBERG



©ABBY MATHESON

FAMILY ADVENTURE



VIA RAIL



— ASK US ABOUT —

Churchill Town and Tundra Experience

October & November



Have the best of both worlds: experience the northern frontier town of Churchill and the wonderful wildlife surrounding it! This hotel-based adventure offers the excitement of polar bear viewing from a Tundra Buggy, and the opportunity to take in the eclectic charm of this remote northern town.

The Churchill Town and Tundra Experience includes two full-day Tundra Buggy safaris in the Churchill Wildlife Management Area (CWMA), where polar bears await the freezing of the Hudson Bay. You will have plenty of opportunity to explore the CWMA for these majestic mammals and other subarctic wildlife in their natural environment.

Indulge in and explore the history and culture of Churchill at the Itsanitaq Museum, home to a large collection of Inuit artifacts including traditional carvings and kayaks. Next, take in the Parks Canada Visitor Centre for its in-depth displays revealing the history of Churchill, dating back to the fur trade era and beyond. You can even race through the boreal forest with a local dog musher and team of enthusiastic sled dogs by partaking in the traditional northern sport of dog sledding.

Sitting on the edge of the Hudson Bay, built on deep Indigenous roots and home to Canada's most iconic wildlife, the town of Churchill is a must-visit destination for those who seek an authentic Canadian adventure.

This departure can be experienced at the



ENTHUSIAST
LEVEL

This classic adventure is our most well-rounded and the best way to experience both wildlife and culture in Churchill. See available dates on pages 33 & 37.

Learn more on page 10.

Tundra Buggy Lodge at Polar Bear Point

October & November



Frontiers North's Tundra Buggy Lodge is located at Polar Bear Point in the Churchill Wildlife Management Area, home to the largest concentration of polar bears in the Churchill area. The lodge offers a unique, immersive experience where, when conditions are right, you can view the dance of the northern lights from the rooftop observation deck and fall asleep with polar bears right outside your window.

Daily Tundra Buggy excursions take you beyond the lodge for plenty of photography opportunities. Evenings at the lodge can be just as memorable, with delectable, regional dishes created by your private lodge chef and ample time to swap stories with other guests and enjoy regional cuisine. As a guest at the Tundra Buggy Lodge, you are also invited to enjoy exclusive evening presentations hosted by Polar Bears International species experts and our knowledgeable Interpretive Guides.

This departure can be experienced at the



**ENTHUSIAST
LEVEL**



**SPECIALIST
LEVEL**

Learn more on page 10.

This immersive adventure will maximize your wildlife viewing opportunities in the Churchill Wildlife Management Area. See available dates on pages 36 & 39.



©ALEX BUHADAR



©BJ KRISCHOFFER

Conservation Journey: Polar Bears

Early November



This exclusive tour combines education and adventure to create a unique opportunity to experience the heart of polar bear country with a leading polar bear scientist.

Learn about polar bear conservation and awareness from a Polar Bears International scientist. Come face-to-face with polar bears in their natural habitat and go behind the scenes on Tundra Buggy One, a mobile broadcast and research station, and the centre of operations for our polar bear cams, broadcast live at explore.org.

Frontiers North's Conservation Journey: Polar Bears brings you into the Churchill Wildlife Management Area, where the highest concentration of polar bears can be found. This departure includes time on the tundra with a knowledgeable Interpretive Guide and evenings at the Tundra Buggy Lodge, learning about how we can work together to help save polar bear habitat.

Join us to see firsthand the work that's being done and learn how you, too, can help preserve polar bear habitat for generations to come.



A portion of the proceeds of this trip will be provided to Polar Bears International in support of its programs and conservation efforts.

This departure can be experienced at the



**ENTHUSIAST
LEVEL**

Learn more on page 10.

This educational adventure is best-suited for individuals with a keen interest in conservation. See available dates on pages 36 & 39.

Frontiers North's Photo Contest

Every year we host our #FindTrueNorth Photo Contest and invite guests to submit their favourite images captured on their Frontiers North adventure.

Over the years, we have received many incredible submissions and we're always blown away by the beautiful moments our guests have captured. Below are just a handful of some of our past winners.

For more information about the contest and to see past submissions visit frontiersnorth.com/photo-contest

Photo contest past winners:



Add To Your Adventure

All add-on experiences are season permitting and subject to availability. For more information, talk to one of our Adventure Planners today!



Winnipeg Hotel

Extend your stay in Winnipeg to see all that our wonderful city has to offer. We are happy to book your additional Winnipeg hotel nights before or after your Churchill adventure.



Cold Weather Gear Rental

If you are visiting Churchill and don't own (or don't want to transport) a parka, snow pants and winter boots, we can help! We are pleased to offer our guests outstanding Canada Goose parkas and snow pants, and Baffin boots through our Gear Rental Program.

frontiersnorth.com/gear-rental



Dog Sledding or Dog Carting

Feel the exhilaration of a dog sled or dog cart excursion through the boreal forest with a local musher who provides fascinating interpretation of the sport of dog sledding. Get close to the earth and into the elements as you travel with an experienced, northern dog team!



Helicopter tour

Experience the majesty of Canada's large ecosystem on an hour-long helicopter tour over the desert-like tundra and northern boreal forest. Fly over the Churchill Wildlife Management Area and Wapusk National Park in search of northern wildlife including polar bears, moose, ringed seals, caribou and arctic fox.



Kayaking

Kayak in the Churchill River estuary where beluga whales can seek you out and swim by for a closer look. This adventure is great for all levels of paddlers and no experience is necessary; a Zodiac boat with an experienced driver will be nearby at all times.



Paddleboarding

Feel the ebb and flow of the Churchill River beneath your feet on a beluga whale experience you will find nowhere else. Paddleboarding offers the opportunity to get right on the water and can be enjoyed standing or sitting. Let the belugas lead the way as you explore the river estuary on this unique and fun activity.



1. Helicopter Tours
2. Paddleboarding
3. Dog sledding
4. Kayaking
5. Cold Weather Gear Rental

Take the Train to Churchill

Experience unparalleled northern landscapes on board the Winnipeg-Churchill train with VIA Rail Canada, available on select adventures with Frontiers North. The train journey is a fantastic way to witness Canada's many landscapes, and with no roads leading to Churchill, this train route is the only dry land connection to this remarkable community — a travel experience that is truly one-of-a-kind!



DOES A UNIQUE JOURNEY BY TRAIN SOUND LIKE YOUR IDEAL TRAVEL EXPERIENCE? SEE PAGES 12, 18 AND 22 FOR VIA RAIL CANADA DEPARTURE OPTIONS.

4 Perks of Taking the Train

1 Slow Down and Enjoy

Sit back and relax as you enjoy the amenities of the train! The 1,697 kilometre (1,055 mile) ride will take roughly 45 hours to complete — perfect for the traveller who enjoys slowing down and appreciating their surroundings. Guests taking the train on select departures will have their own cabin, all meals included, access to showers and roomy accommodations, ensuring a comfortable ride all the way up north!

3 Sustainable Travel

All aboard the VIA Rail express for a greener, more sustainable form of travel! The train's carbon emissions are lower than an airplane's, and it's operated to reduce environmental impact on the delicate permafrost that sits below the tracks in northern Manitoba.

2 Beautiful Scenery

Beginning in Winnipeg, Manitoba's capital city, you will embark on a beautiful commute that winds through Canada's iconic prairie farmland, vast boreal forest and finally to the subarctic tundra where your final destination awaits: Churchill, Manitoba. The train is an easy way to see some of Canada's most famous ecological zones, so don't forget your camera!

4 Meet Other Travellers

One of the greatest things about travelling is the friends made along the way! The train is an excellent opportunity to meet new people and maybe even make plans to meet up with them during your Churchill adventure!

Travelling with a group? Our private and custom tours are just for you!

Create an exclusive, fully customized experience with Frontiers North Adventures. We will look after the details so you don't have to!

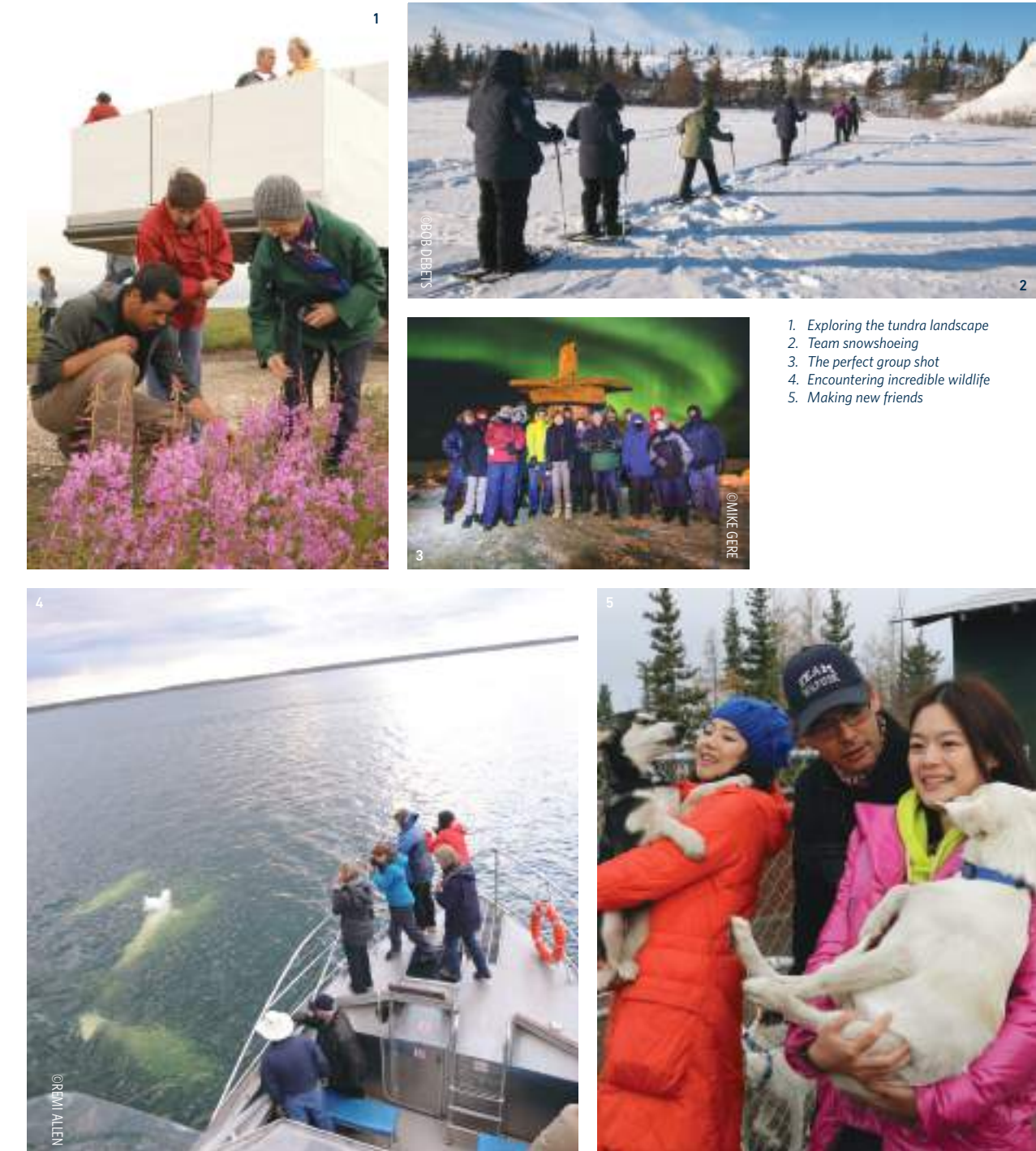
Personalize your adventure and travel your way with a tailor-made tour. Whether you're planning for your next family reunion, photography club outing or an education-focussed university alumni program, we can create a custom itinerary that suits your specific needs.

Create a thematic experience or immerse your group in the types of activities that are of most interest to you, either by building onto one of our pre-designed itineraries or creating a fully customized tour from the ground up. Ask us about opportunities to dine beneath the northern lights, kayak with beluga whales, explore the tundra with arctic species experts, hike in the footsteps of the early explorers or sleep in the heart of polar bear country.

The level of customization is up to you! You can keep your trip exclusive to just your travellers and choose the travel dates that work best for you. We can even provide one of our professional interpretive guides as your group's dedicated tour leader: we take care of all the details so you don't have to!

Some of the groups we've teamed up with include: Coca-Cola, Canada Goose, Oregon Zoo, Stanford Alumni Association, Beakerhead, Chief Executives Organization, Olivia Travel and more!

Frontiers North has a long history of tailoring tours to suit our clients' needs. Let us create a custom adventure for you!



1. Exploring the tundra landscape
2. Team snowshoeing
3. The perfect group shot
4. Encountering incredible wildlife
5. Making new friends

Grizzly Bears
of the Great
Bear Rainforest

May to October



Take a glimpse into the daily lives of the grizzly bear and other magnificent wildlife as you explore the coastal areas of the Great Bear Rainforest in British Columbia. This lodge-based adventure features daily boat excursions and interpretive hikes in this remote and beautiful area, renowned for its vast array of wildlife.

Spring (May to June)

Bear witness to grizzly bears as they graze on sedge along the river's edge after emerging from their mountain dens. Spring is also host to a variety of birds, such as the bald eagle, waterfowl and songbirds.

Summer (July to August)

Float quietly along the estuary sloughs to observe the bears, birds and other animals that inhabit the area. If you're lucky, you may catch a glimpse of a humpback whale from the lodge or hear the hauntingly beautiful calls of the rainforest wolves.

Autumn (August to October)

In mid-August, salmon begin to return to the river estuaries by the thousands. Watch from enclosed viewing stands along the riverbank as bears gorge themselves in preparation for winter.

This departure can be experienced at the



Learn more on page 10.

Witness the daily life of the magnificent grizzly bear on this Canadian west-coast adventure. See available dates on page 35.



Arctic
Expedition
Cruises

August to October



Explore arctic waters aboard an expedition-class cruise ship. These ship-based adventures will transport you to virtually untouched landscapes where the wild reigns supreme.

Out of the Northwest Passage

The Northwest Passage remains one of the world's last true frontiers in Canada's vast northern wilderness, where wildlife roams freely and the great geological forces that shape our planet can be seen.

Greenland and Wild Labrador

Explore the remote reaches of Newfoundland and Labrador in full summer bloom, and the natural landscape of Greenland, an area distinguished by jaw-dropping beauty and rich biodiversity.

High Arctic Explorer

Visit the far reaches of the Arctic at the height of summer, where the Inuit homelands lie. Journey in comfort from Qausuittuq, Nunavut to Kangerlussuaq, Greenland.

Into the Northwest Passage

To journey through the fierce and starkly beautiful Northwest Passage is to relive a piece of history as you encounter the haunting landscapes that enchanted explorers for centuries.

Newfoundland Circumnavigation

Explore Newfoundland from coast to coast as you take in its world-famous culture and hospitality, where charming fishing villages scale the mountainous landscapes.

This departure can be experienced at the



Learn more on page 10.

Explore the arctic waters as you've never dreamed possible aboard an expedition class cruise ship. See available dates on page 36.

MEET OUR TEAM

We're from here

At Frontiers North, we're invested in the places we travel because we're from here. We're proud to employ full time and seasonal staff from across Canada, with 73% of those right here in Manitoba. This great country is what we know and what we love; let us share it with you.

50%

of our management team are women

13%

of our staff have a disability

11%

of our staff are Indigenous

10%

of our staff are visible minorities

Our Suppliers

Our purchasing policy ensures we strive to source locally-owned and Indigenous suppliers and businesses.

62%

of our suppliers are locally-owned businesses

33%

of our Churchill suppliers are Indigenous-owned businesses

Experience One of the Seven Natural Wonders of the World

"As the skies began to darken we loaded onto a massive Tundra Buggy and headed across a frozen river to escape the distractions of Churchill's lights. Forty minutes later, we reached our desolate destination, and if as on cue, the lights began dancing across the sky. The ethereal shapes made by atmospheric gases slithered through the sky in shades of green that varied from deep emerald to bright neon, often resembling colourful smoke. Majestic hues of purple occasionally wove themselves through the sky like a ribbon, and the show went on for hours. We oohed, we ahhhed and we could not take our eyes off of them.

I realized that, once more, Churchill had taken my breath away — and this time, it had nothing to do with the frigid air."

- Paula Felps, Canada

BECOME INSPIRED ON A
NORTHERN LIGHTS AND WINTER NIGHTS ADVENTURE

32

2021 Frontiers North Adventures

Prices in Canadian dollars (CAD) unless otherwise stated, based on double occupancy. Price does not include applicable taxes (5% GST + 3.5% PST), mandatory comprehensive travel insurance or gratuities. All dates, prices, taxes, inclusions, itineraries and activities are subject to change

- Activities Key:
- AP - Assiniboine Park Conservancy
 - BB - Beluga Boat tour
 - BE - Bison enclosure
 - BF - Beluga and fort tour
 - BT - Brewery tour
 - BZ - Beluga Zodiac
 - CE - Culinary experience
 - CH - Coastal hike
 - CP - Cultural presentation
 - CS - Churchill Northern Studies Centre
 - CT - Churchill and area tour
 - DC - Dog carting
 - DS - Dog sledding
 - FA - Family activities
 - FE - Forest excursion
 - IC - Interpretive cruise
 - IH - Interpretive hike
 - IM - Itsanitaq Museum
 - IT - Interpretive transfer
 - IW - Interpretive walking tour
 - MM - Manitoba Museum program

- PB - Polar Bears International House
- PC - Parks Canada Visitor Centre
- PT - Photography tour
- PW - Photo workshop
- RE - River excursion
- RT - Roads and trails hike
- RW - Rainforest walk
- SP - Slide presentation
- ST - Snowshoe trek
- TB - Tundra Buggy® adventure
- TL - Thanadelthur Lounge

- WD - Wildlife drive
- WP - Winnipeg planetarium
- WT - Winnipeg tour
- ALL - All meals included
- SOME - Select meals included
- R/T - Return airfare* included
- O/W - One way airfare* or rail included

*All airfare is between Winnipeg-Churchill unless otherwise stated.

Tour code	Dates	Nights Winnipeg	Nights Churchill	Tundra Buggy adventures	Leader type	Air	Meals	Tour capacity	Cost	Single supplement	Activities		
CHURCHILL TOWN AND TUNDRA EXPERIENCE													
ENTHUSIAST													
15	Oct 21-Oct 25	2	2	2	Interpretive Guide	R/T	All	22	\$6,349	\$850	CT,PB,PC,TB		
19	Oct 24-Oct 28	2	2	2	Interpretive Guide	R/T	All	22	\$6,349	\$850	CT,PB,PC,TB		
23	Oct 27-Oct 31	2	2	2	Interpretive Guide	R/T	All	22	\$6,349	\$850	CT,PB,PC,TB		
27	Oct 30-Nov 3	2	2	2	Interpretive Guide	R/T	All	22	\$6,349	\$850	CT,PB,PC,TB		
30	Nov 2-Nov 6	2	2	2	Interpretive Guide	R/T	All	22	\$6,349	\$850	CT,PB,PC,TB		
34	Nov 7-Nov 11	2	2	2	Interpretive Guide	R/T	All	22	\$6,349	\$850	CT,PB,PC,TB		
38	Nov 11-Nov 15	2	2	2	Interpretive Guide	R/T	All	22	\$6,349	\$850	CT,PB,PC,TB		
46	Sep 25-Sep 30	2	3	2	Interpretive Guide	R/T	All	22	\$6,949	\$1,150	CP,CT,DS,IM,PB,PC,TB		
2	Oct 3-Oct 8	2	3	2	Interpretive Guide	R/T	All	22	\$6,949	\$1,150	CP,CT,DS,IM,PB,PC,TB		
3	Oct 8-Oct 13	2	3	2	Interpretive Guide	R/T	All	22	\$6,949	\$1,150	CP,CT,DS,IM,PB,PC,TB		
5	Oct 11-Oct 16	2	3	2	Interpretive Guide	R/T	All	22	\$6,949	\$1,150	CP,CT,DS,IM,PB,PC,TB		
7	Oct 14-Oct 19	2	3	2	Interpretive Guide	R/T	All	22	\$6,949	\$1,150	CP,CT,DS,IM,PB,PC,TB		
10	Oct 17-Oct 22	2	3	2	Interpretive Guide	R/T	All	22	\$6,949	\$1,150	CP,CT,DS,IM,PB,PC,TB		
13	Oct 20-Oct 25	2	3	2	Interpretive Guide	R/T	All	22	\$6,949	\$1,150	CP,CT,DS,IM,PB,PC,TB		
16	Oct 23-Oct 28	2	3	2	Interpretive Guide	R/T	All	22	\$6,949	\$1,150	CP,CT,DS,IM,PB,PC,TB		
20	Oct 26-Oct 31	2	3	2	Interpretive Guide	R/T	All	22	\$6,949	\$1,150	CP,CT,DS,IM,PB,PC,TB		
24	Oct 29-Nov 3	2	3	2	Interpretive Guide	R/T	All	22	\$6,949	\$1,150	CP,CT,DS,IM,PB,PC,TB		
28	Nov 1-Nov 6	2	3	2	Interpretive Guide	R/T	All	22	\$6,949	\$1,150	CP,CT,DS,IM,PB,PC,TB		
31	Nov 4-Nov 9	2	3	2	Interpretive Guide	R/T	All	22	\$6,949	\$1,150	CP,CT,DS,IM,PB,PC,TB		
35	Nov 7-Nov 12	2	3	2	Interpretive Guide	R/T	All	22	\$6,949	\$1,150	CP,CT,DS,IM,PB,PC,TB		
37	Nov 10-Nov 15	2	3	2	Interpretive Guide	R/T	All	22	\$6,949	\$1,150	CP,CT,DS,IM,PB,PC,TB		
39	Nov 13-Nov 18	2	3	2	Interpretive Guide	R/T	All	22	\$6,949	\$1,150	CP,CT,DS,IM,PB,PC,TB		
ENTHUSIAST - FAMILY ADVENTURE													
4	Oct 8-Oct 12	2	2	2	Interpretive Guide	R/T	All	38	\$5,729 (Adult) / \$4,729 (Child*)	\$999	DS,FA,IT,PB,PC,TB		
*Child rate applies to children 12 years of age or under at time of travel.													
Tour code	Dates	Nights Winnipeg	Nights train	Nights Churchill	Tundra Buggy adventures	Leader type	Air	Rail	Meals	Tour capacity	Cost	Single supplement	Activities
ENTHUSIAST - VIA RAIL													
41	Oct 9-Oct 16	2	2	3	2	Interpretive Guide	O/W	O/W	All	22	\$8,299	\$1,150	CP,CT,DS,IM,PB,PC,TB
42	Oct 18-Oct 25	2	2	3	2	Interpretive Guide	O/W	O/W	All	22	\$8,299	\$1,150	CP,CT,DS,IM,PB,PC,TB
43	Oct 30-Nov 6	2	2	3	2	Interpretive Guide	O/W	O/W	All	22	\$8,299	\$1,150	CP,CT,DS,IM,PB,PC,TB
44	Nov 6-Nov 13	2	2	3	2	Interpretive Guide	O/W	O/W	All	22	\$8,299	\$1,150	CP,CT,DS,IM,PB,PC,TB
45	Nov 8-Nov 15	2	2	3	2	Interpretive Guide	O/W	O/W	All	22	\$8,299	\$1,150	CP,CT,DS,IM,PB,PC,TB



Tour code	Dates	Nights Winnipeg	Nights Churchill	Northern lights trips		Leader type	Air		Meals	Tour capacity	Cost	Single supplement	Activities		
NORTHERN LIGHTS AND WINTER NIGHTS															
ENTHUSIAST															
NL7	Feb 25-Mar 2	2	3	3		Interpretive Guide	R/T		All	20	\$5,399	\$800	CE,CT,DS,FE,IM,PB,PC,ST,TB,TL		
NL3	Feb 28-Mar 5	2	3	3		Interpretive Guide	R/T		All	20	\$5,399	\$800	CE,CT,DS,FE,IM,PB,PC,ST,TB,TL		
NL5	Mar 4-Mar 9	2	3	3		Interpretive Guide	R/T		All	20	\$5,399	\$800	CE,CT,DS,FE,IM,PB,PC,ST,TB,TL		
Tour code	Dates	Nights Winnipeg	Nights train	Nights Churchill	Northern lights trips	Leader type	Air		Rail	Meals	Tour capacity	Cost	Single supplement	Activities	
ENTHUSIAST - VIA RAIL															
NL9	Feb 20-Feb 27	2	2	3	3	Interpretive Guide	O/W	O/W	All	20	\$5,699	\$800	CE,CT,DS,FE,IM,PB,PC,ST,TB,TL		
Tour code	Dates	Nights Churchill			Northern lights trips	Leader type	Air*			Meals	Tour capacity	Group Size	Cost	Single supplement	Activities
ENTHUSIAST - CALGARY-CHURCHILL DIRECT															
NL10	Mar 12-Mar 14	2			2	Escorted	R/T		All	96	24	\$3,999	\$350	CE,CT,DS,FE,IM,PC,ST,TB,TL	
*Airfare is Calgary-Churchill direct.															
Tour code	Dates	Nights Winnipeg	Nights Churchill	Northern lights trips		Leader type	Air			Meals	Tour capacity	Cost	Single supplement	Activities	
SPECIALIST															
NL2	Feb 25-Mar 4	3	4	4		Photo Specialist	R/T		All	20	\$6,099	\$1,025	CE,CT,DS,FE,IM,MM,PB,PC,PW,ST,TB,TL,WP		
NL4	Mar 1-Mar 8	3	4	4		Photo Specialist	R/T		All	20	\$6,099	\$1,025	CE,CT,DS,FE,IM,MM,PB,PC,PW,ST,TB,TL,WP		
Tour code	Dates	Nights Churchill	Nights train	Nights Churchill	Northern lights trips	Leader type	Air		Rail	Meals	Tour capacity	Cost	Single supplement	Activities	
SPECIALIST - VIA RAIL															
NL1	Feb 21-Mar 2	3	2	4	4	Photo Specialist	O/W	O/W	All	20	\$6,899	\$1,025	CE,CT,DS,FE,IM,MM,PB,PC,PW,ST,TB,TL,WP		

Tour code	Dates	Nights Winnipeg	Nights Churchill	Nights Riding Mountain	Tundra Buggy adventures	Leader type	Air	Meals	Tour capacity	Cost	Single supplement	Activities
FRONTIERS NORTH'S BIG FIVE SAFARI												
ENTHUSIAST												
BF1	Jul 18-Jul 25	3	2	2	1	Interpretive Guide	R/T	All	18	\$6,999	\$1,250	BE,BF,BT,BZ,CT,DC,IC,IH,IM,IW,PC,TB,WD
BF2	Aug 3-Aug 10	3	2	2	1	Interpretive Guide	R/T	All	18	\$6,999	\$1,250	BE,BF,BT,BZ,CT,DC,IC,IH,IM,IW,PC,TB,WD
BF3	Aug 10-Aug 17	3	2	2	1	Interpretive Guide	R/T	All	18	\$6,999	\$1,250	BE,BF,BT,BZ,CT,DC,IC,IH,IM,IW,PC,TB,WD
BF4	Aug 17-Aug 24	3	2	2	1	Interpretive Guide	R/T	All	18	\$6,999	\$1,250	BE,BF,BT,BZ,CT,DC,IC,IH,IM,IW,PC,TB,WD

Tour code	Dates	Nights Winnipeg	Nights Riding Mountain	Leader type	Meals	Tour capacity	Cost	Single supplement	Activities
RIDING MOUNTAIN ADVENTURE									
ENTHUSIAST									
RM5	Jun 3-Jun 7	2	2	Interpretive Guide	All	18	\$2,549	\$650	BE,BT,IC,IH,IW,PC,WD
RM6	Jun 10-Jun 14	2	2	Interpretive Guide	All	18	\$2,549	\$650	BE,BT,IC,IH,IW,PC,WD
RM1	Jul 18-Jul 22	2	2	Interpretive Guide	All	18	\$2,549	\$650	BE,BT,IC,IH,IW,PC,WD
RM2	Aug 3-Aug 7	2	2	Interpretive Guide	All	18	\$2,549	\$650	BE,BT,IC,IH,IW,PC,WD
RM3	Aug 10-Aug 14	2	2	Interpretive Guide	All	18	\$2,549	\$650	BE,BT,IC,IH,IW,PC,WD
RM4	Aug 17-Aug 21	2	2	Interpretive Guide	All	18	\$2,549	\$650	BE,BT,IC,IH,IW,PC,WD



Tour code	Dates	Nights Winnipeg	Nights Churchill	Tundra Buggy adventures	Leader type	Air	Meals	Tour capacity	Cost	Single supplement	Activities
BELUGAS, BEARS AND BLOOMS											
ADVENTURER											
BBB4	Jul 1-Jul 6	2	3	1	Unescorted	R/T	Some	40	\$4,599	\$800	BF,BZ,CT,DC,TB
BBB5	Jul 8-Jul 13	2	3	1	Unescorted	R/T	Some	40	\$4,599	\$800	BF,BZ,CT,DC,TB
BBB6	Jul 15-Jul 20	2	3	1	Unescorted	R/T	Some	40	\$4,599	\$800	BF,BZ,CT,DC,TB
BBB7	Jul 22-Jul 27	2	3	1	Unescorted	R/T	Some	40	\$4,599	\$800	BF,BZ,CT,DC,TB
BBB8	Jul 29-Aug 3	2	3	1	Unescorted	R/T	Some	40	\$4,599	\$800	BF,BZ,CT,DC,TB
BBB9	Aug 5-Aug 10	2	3	1	Unescorted	R/T	Some	40	\$4,599	\$800	BF,BZ,CT,DC,TB
BBB10	Aug 12-Aug 17	2	3	1	Unescorted	R/T	Some	40	\$4,599	\$800	BF,BZ,CT,DC,TB
BBB11	Aug 19-Aug 24	2	3	1	Unescorted	R/T	Some	40	\$4,599	\$800	BF,BZ,CT,DC,TB
ADVENTURER - FAMILY ADVENTURE											
BBB13	Jul 19-Jul 24	2	3	1	Unescorted	R/T	Some	36	\$4,599 (Adult) / \$3,599 (Child*)	\$800	BF,BZ,DC,FA,PC,RT,TB
BBB14	Jul 26-Jul 31	2	3	1	Unescorted	R/T	Some	36	\$4,599 (Adult) / \$3,599 (Child*)	\$800	BF,BZ,DC,FA,PC,RT,TB
*Child rate applies to children 12 years of age or under at time of travel.											
Tour code	Dates	Nights train	Nights Churchill	Tundra Buggy adventures	Leader type	Rail	Meals	Tour capacity	Cost	Single supplement	Activities
ADVENTURER - DRIVE AND RAIL											
BBB15	Jul 2-Jul 7	2	3	1	Unescorted	R/T	Some	20	\$1,549	\$475	BF,DC,TB
BBB16	Jul 9-Jul 14	2	3	1	Unescorted	R/T	Some	20	\$1,549	\$475	BF,DC,TB
BBB17	Aug 13-Aug 18	2	3	1	Unescorted	R/T	Some	20	\$1,549	\$475	BF,DC,TB
*Rail fare is overnight Thompson-Churchill return, economy class.											
Tour code	Dates	Nights Winnipeg	Nights Churchill	Tundra Buggy adventures	Leader type	Air	Meals	Tour capacity	Cost	Single supplement	Activities
ENTHUSIAST											
BBB1	Jul 16-Jul 21	2	3	1	Interpretive Guide	R/T	All	22	\$5,299	\$800	BF,BZ,CT,DC,IM,PC,TB,WT
BBB2	Jul 23-Jul 28	2	3	1	Interpretive Guide	R/T	All	22	\$5,299	\$800	BF,BZ,CT,DC,IM,PC,TB,WT
BBB3	Aug 6-Aug 11	2	3	1	Interpretive Guide	R/T	All	22	\$5,299	\$800	BF,BZ,CT,DC,IM,PC,TB,WT
CONSERVATION JOURNEY: BELUGA WHALES											
CJBW1	Jul 30-Aug 4	2	3	1	Interpretive Guide	R/T	All	22	\$5,599	\$800	AP,BB,BF,BZ,CH,CS,CT,PB,SP,TB
Partial proceeds from this trip will support Ocean Wise.											

Season	Season dates	Nights Lodge	Leader type	Meals	Tour capacity	Cost	Single supplement	Activities
GRIZZLY BEARS OF THE GREAT BEAR RAINFOREST								
SPECIALIST								
Spring	May 7-Jun 29	4	Local Naturalist	All	10	\$3,305	-	RE,RW,SP
Spring	May 7-Jun 29	7	Local Naturalist	All	10	\$5,890	-	RE,RW,SP
Summer	Jun 30-Aug 19	4	Local Naturalist	All	10	\$2,750	-	RE,RW,SP
Summer	Jun 30-Aug 19	7	Local Naturalist	All	10	\$4,765	-	RE,RW,SP
Autumn	Aug 20-Oct 19	4	Local Naturalist	All	16	\$4,730	\$3,420	RE,RW,SP
Autumn	Aug 20-Oct 19	7	Local Naturalist	All	16	\$8,735	\$6,810	RE,RW,SP
Applicable taxes are 5% GST (no PST).								



Tour code	Dates	Nights Winnipeg	Nights Churchill	Nights Lodge	Tundra Buggy adventures	Leader type	Air	Meals	Tour capacity	Cost	Single supplement	Activities
TUNDRA BUGGY LODGE AT POLAR BEAR POINT												
ENTHUSIAST												
50	Oct 8-Oct 12	2	-	2	2	Interpretive Guide	R/T	All	20	\$6,249	\$285	CT,TB
52	Oct 10-Oct 14	2	-	2	2	Interpretive Guide	R/T	All	20	\$6,249	\$285	CT,TB
56	Oct 14-Oct 19	2	1	2	2	Interpretive Guide	R/T	All	20	\$7,449	\$575	CT,DS,IM,PC,TB
58	Oct 16-Oct 21	2	1	2	2	Interpretive Guide	R/T	All	20	\$7,449	\$575	CT,DS,IM,PC,TB
60	Oct 18-Oct 23	2	1	2	2	Interpretive Guide	R/T	All	20	\$7,449	\$575	CT,DS,IM,PC,TB
54	Oct 11-Oct 17	2	1	3	3	Interpretive Guide	R/T	All	20	\$8,949	\$575	CT,DS,IM,PC,TB
62	Oct 20-Oct 26	2	1	3	3	Interpretive Guide	R/T	All	20	\$8,949	\$575	CT,DS,IM,PC,TB
64	Oct 23-Oct 29	2	1	3	3	Interpretive Guide	R/T	All	20	\$8,949	\$575	CT,DS,IM,PC,TB
72	Nov 4-Nov 10	2	1	3	3	Interpretive Guide	R/T	All	20	\$8,949	\$575	CT,DS,IM,PC,TB
SPECIALIST												
76	Nov 11-Nov 17	2	1	3	3	Photo Specialist	R/T	All	20	\$9,149	\$575	CT,DS,PB,PT,PW,TB
78	Nov 13-Nov 19	2	1	3	3	Photo Specialist	R/T	All	20	\$9,149	\$575	CT,DS,PB,PT,PW,TB
CONSERVATION JOURNEY: POLAR BEARS												
68	Oct 29-Nov 4	2	1	3	3	Interpretive Guide	R/T	All	20	\$9,149	\$575	CT,DS IM,PB,PC,TB
Partial proceeds from this trip will support Polar Bears International.												

Tour	Dates	Start	End	Category 3 Int. Twin	Category 4 Ext. Twin	Category 5 Main Twin	Category 6 Comfort Twin	Category 7 Select Twin	Category 8 Sup. Twin	Additional air cost (approx.)
ARCTIC EXPEDITION CRUISES										
SPECIALIST										
High Arctic Explorer	Aug 5-Aug 16	Ottawa, ON	Toronto, ON	\$10,195	\$11,495	\$12,795	\$14,095	\$15,395	\$16,695	\$2,495
Into the Northwest Passage	Aug 16-Sep 1	Toronto, ON	Yellowknife, NT	\$14,895	\$16,395	\$17,895	\$19,395	\$20,895	\$22,395	\$2,495
Out of the Northwest Passage	Sep 1-Sep 17	Yellowknife, NT	Toronto, ON	\$14,895	\$16,395	\$17,895	\$19,395	\$20,895	\$22,395	\$2,495
Greenland & Wild Labrador	Sep 17-Oct 1	Toronto, ON	St. Johns, NL	\$9,795	\$11,095	\$12,395	\$13,695	\$14,995	\$16,295	\$1,295
Newfoundland Circumnavigation	Oct 1-Oct 11	St. John's, NL	St. John's, NL	\$6,995	\$8,295	\$9,595	\$10,895	\$12,195	\$13,495	-
All taxes and fees included. Additional air cost applies between port of call to/from ship.										



2022 Frontiers North Adventures

Prices in Canadian dollars (CAD) unless otherwise stated, based on double occupancy. Price does not include applicable taxes (5% GST + 3.5% PST), mandatory comprehensive travel insurance or gratuities. All dates, prices, taxes, inclusions, itineraries and activities are subject to change

- Activities Key:
- AP - Assiniboine Park Conservancy
 - BB - Beluga Boat tour
 - BE - Bison enclosure
 - BF - Beluga and fort tour
 - BT - Brewery tour
 - BZ - Beluga Zodiac
 - CE - Culinary experience
 - CH - Coastal hike
 - CP - Cultural presentation
 - CS - Churchill Northern Studies Centre
 - CT - Churchill and area tour
 - DC - Dog carting
 - DS - Dog sledding
 - FA - Family activities
 - FE - Forest excursion
 - IC - Interpretive cruise
 - IH - Interpretive hike
 - IM - Itsanitaq Museum
 - IT - Interpretive transfer
 - IW - Interpretive walking tour
 - MM - Manitoba Museum program

- PB - Polar Bears International House
- PC - Parks Canada Visitor Centre
- PT - Photography tour
- PW - Photo workshop
- RT - Roads and trails hike
- SP - Slide presentation
- ST - Snowshoe trek
- TB - Tundra Buggy® adventure
- TL - Thanadelthur Lounge
- WD - Wildlife drive
- WP - Winnipeg planetarium

- WT - Winnipeg tour
 - ALL - All meals included
 - SOME - Select meals included
 - R/T - Return airfare* included
 - O/W - One way airfare* or rail included
- *All airfare is between Winnipeg-Churchill unless otherwise stated.

Tour code	Dates	Nights Winnipeg	Nights Churchill	Tundra Buggy adventures	Leader type	Air	Meals	Tour capacity	Cost	Single supplement	Activities		
CHURCHILL TOWN AND TUNDRA EXPERIENCE													
ENTHUSIAST													
16	Oct 21-Oct 25	2	2	2	Interpretive Guide	R/T	All	22	\$6,549	\$850	CT,PB,PC,TB		
20	Oct 24-Oct 28	2	2	2	Interpretive Guide	R/T	All	22	\$6,549	\$850	CT,PB,PC,TB		
23	Oct 27-Oct 31	2	2	2	Interpretive Guide	R/T	All	22	\$6,549	\$850	CT,PB,PC,TB		
26	Oct 30-Nov 3	2	2	2	Interpretive Guide	R/T	All	22	\$6,549	\$850	CT,PB,PC,TB		
30	Nov 2-Nov 6	2	2	2	Interpretive Guide	R/T	All	22	\$6,549	\$850	CT,PB,PC,TB		
34	Nov 7-Nov 11	2	2	2	Interpretive Guide	R/T	All	22	\$6,549	\$850	CT,PB,PC,TB		
35	Nov 8-Nov 12	2	2	2	Interpretive Guide	R/T	All	22	\$6,549	\$850	CT,PB,PC,TB		
38	Nov 11-Nov 15	2	2	2	Interpretive Guide	R/T	All	22	\$6,549	\$850	CT,PB,PC,TB		
2	Sep 25-Sep 30	2	3	2	Interpretive Guide	R/T	All	22	\$7,149	\$1,150	CP,CT,DS,IM,PB,PC,TB		
3	Oct 3-Oct 8	2	3	2	Interpretive Guide	R/T	All	22	\$7,149	\$1,150	CP,CT,DS,IM,PB,PC,TB		
4	Oct 8-Oct 13	2	3	2	Interpretive Guide	R/T	All	22	\$7,149	\$1,150	CP,CT,DS,IM,PB,PC,TB		
6	Oct 11-Oct 16	2	3	2	Interpretive Guide	R/T	All	22	\$7,149	\$1,150	CP,CT,DS,IM,PB,PC,TB		
8	Oct 14-Oct 19	2	3	2	Interpretive Guide	R/T	All	22	\$7,149	\$1,150	CP,CT,DS,IM,PB,PC,TB		
11	Oct 17-Oct 22	2	3	2	Interpretive Guide	R/T	All	22	\$7,149	\$1,150	CP,CT,DS,IM,PB,PC,TB		
13	Oct 20-Oct 25	2	3	2	Interpretive Guide	R/T	All	22	\$7,149	\$1,150	CP,CT,DS,IM,PB,PC,TB		
17	Oct 23-Oct 28	2	3	2	Interpretive Guide	R/T	All	22	\$7,149	\$1,150	CP,CT,DS,IM,PB,PC,TB		
21	Oct 26-Oct 31	2	3	2	Interpretive Guide	R/T	All	22	\$7,149	\$1,150	CP,CT,DS,IM,PB,PC,TB		
24	Oct 29-Nov 3	2	3	2	Interpretive Guide	R/T	All	22	\$7,149	\$1,150	CP,CT,DS,IM,PB,PC,TB		
27	Nov 1-Nov 6	2	3	2	Interpretive Guide	R/T	All	22	\$7,149	\$1,150	CP,CT,DS,IM,PB,PC,TB		
31	Nov 4-Nov 9	2	3	2	Interpretive Guide	R/T	All	22	\$7,149	\$1,150	CP,CT,DS,IM,PB,PC,TB		
36	Nov 10-Nov 15	2	3	2	Interpretive Guide	R/T	All	22	\$7,149	\$1,150	CP,CT,DS,IM,PB,PC,TB		
39	Nov 13-Nov 18	2	3	2	Interpretive Guide	R/T	All	22	\$7,149	\$1,150	CP,CT,DS,IM,PB,PC,TB		
ENTHUSIAST - FAMILY ADVENTURE													
5	Oct 8-Oct 12	2	2	2	Interpretive Guide	R/T	All	38	\$5,929 (Adult) / \$4,929 (Child*)	\$999	DS,FA,IT,PB,PC,TB		
*Child rate applies to children 12 years of age or under at time of travel.													
Tour code	Dates	Nights Winnipeg	Nights train	Nights Churchill	Tundra Buggy adventures	Leader type	Air	Rail	Meals	Tour capacity	Cost	Single supplement	Activities
ENTHUSIAST - VIA RAIL													
43	Oct 8-Oct 15	2	2	3	2	Interpretive Guide	O/W	O/W	All	22	\$8,449	\$1,150	CP,CT,DS,IM,PB,PC,TB
44	Oct 15-Oct 22	2	2	3	2	Interpretive Guide	O/W	O/W	All	22	\$8,449	\$1,150	CP,CT,DS,IM,PB,PC,TB
45	Oct 24-Oct 31	2	2	3	2	Interpretive Guide	O/W	O/W	All	22	\$8,449	\$1,150	CP,CT,DS,IM,PB,PC,TB
46	Nov 5-Nov 12	2	2	3	2	Interpretive Guide	O/W	O/W	All	22	\$8,449	\$1,150	CP,CT,DS,IM,PB,PC,TB



Tour code	Dates	Nights Winnipeg	Nights Churchill	Northern lights trips		Leader type	Air		Meals	Tour capacity		Cost	Single supplement	Activities		
NORTHERN LIGHTS AND WINTER NIGHTS																
ENTHUSIAST																
NL3	Feb 25-Mar 2	2	3	3		Interpretive Guide	R/T		All	20		\$5,739	\$900	CE,CT,DS,FE,IM,PB,PC,ST,TB,TL		
NL5	Mar 2-Mar 7	2	3	3		Interpretive Guide	R/T		All	20		\$5,739	\$900	CE,CT,DS,FE,IM,PB,PC,ST,TB,TL		
Tour code	Dates	Nights Winnipeg	Nights train	Nights Churchill	Northern lights trips	Leader type	Air		Rail	Meals	Tour capacity		Cost	Single supplement	Activities	
ENTHUSIAST - VIA RAIL																
NL1	Feb19-Feb 26	2	2	3	3	Interpretive Guide	O/W	O/W	All	20		\$6,039	\$800	CE,CT,DS,FE,IM,PB,PC,ST,TB,TL		
Tour code	Dates	Nights Churchill			Northern lights trips	Leader type	Air*			Meals	Tour capacity		Group Size	Cost	Single supplement	Activities
ENTHUSIAST - CALGARY-CHURCHILL DIRECT																
NL9	Mar 11-Mar 13	2			2	Escorted	R/T		All	96		24	\$4,189	\$350	CE,CT,DS,FE,IM,PC,ST,TB,TL	
*Airfare is Calgary-Churchill direct.																
Tour code	Dates	Nights Winnipeg	Nights Churchill	Northern lights trips		Leader type	Air			Meals	Tour capacity		Cost	Single supplement	Activities	
SPECIALIST																
NL2	Feb 22-Mar 1	3	4	4		Photo Specialist	R/T		All	20		\$6,439	\$1,025	CE,CT,DS,FE,IM,MM,PB,PC,PW,ST,TB,TL,WP		
NL6	Mar 3-Mar 10	3	4	4		Photo Specialist	R/T		All	20		\$6,439	\$1,025	CE,CT,DS,FE,IM,MM,PB,PC,PW,ST,TB,TL,WP		
NL7	Mar 6-Mar 13	3	4	4		Photo Specialist	R/T		All	20		\$6,439	\$1,025	CE,CT,DS,FE,IM,MM,PB,PC,PW,ST,TB,TL,WP		
Tour code	Dates	Nights Churchill	Nights train	Nights Churchill	Northern lights trips	Leader type	Air		Rail	Meals	Tour capacity		Cost	Single supplement	Activities	
SPECIALIST - VIA RAIL																
NL4	Feb 25-Mar 6	3	2	4	4	Photo Specialist	O/W	O/W	All	20		\$7,239	\$1,025	CE,CT,DS,FE,IM,MM,PB,PC,PW,ST,TB,TL,WP		

Tour code	Dates	Nights Winnipeg	Nights Churchill	Tundra Buggy adventures	Leader type	Air	Meals	Tour capacity	Cost	Single supplement	Activities
BELUGAS, BEARS AND BLOOMS											
ADVENTURER											
BBB4	Jul 2-Jul 7	2	3	1	Unescorted	R/T	Some	40	\$4,749	\$900	BF,BZ,CT,DC,TB
BBB5	Jul 7-Jul 12	2	3	1	Unescorted	R/T	Some	40	\$4,749	\$900	BF,BZ,CT,DC,TB
BBB6	Jul 14-Jul 19	2	3	1	Unescorted	R/T	Some	40	\$4,749	\$900	BF,BZ,CT,DC,TB
BBB7	Jul 21-Jul 26	2	3	1	Unescorted	R/T	Some	40	\$4,749	\$900	BF,BZ,CT,DC,TB
BBB8	Jul 28-Aug 2	2	3	1	Unescorted	R/T	Some	40	\$4,749	\$900	BF,BZ,CT,DC,TB
BBB9	Aug 4-Aug 9	2	3	1	Unescorted	R/T	Some	40	\$4,749	\$900	BF,BZ,CT,DC,TB
BBB10	Aug 11-Aug 16	2	3	1	Unescorted	R/T	Some	40	\$4,749	\$900	BF,BZ,CT,DC,TB
BBB11	Aug 18-Aug 23	2	3	1	Unescorted	R/T	Some	40	\$4,749	\$900	BF,BZ,CT,DC,TB
ADVENTURER - FAMILY ADVENTURE											
BBB13	Jul 18-Jul 23	2	3	1	Unescorted	R/T	Some	36	\$4,749 (Adult) / \$3,749 (Child*)	\$900	BF,BZ,DC,FA,PC,RT,TB
BBB14	Jul 25-Jul 30	2	3	1	Unescorted	R/T	Some	36	\$4,749 (Adult) / \$3,749 (Child*)	\$900	BF,BZ,DC,FA,PC,RT,TB
*Child rate applies to children 12 years of age or under at time of travel.											
ENTHUSIAST											
BBB1	Jul 15-Jul 20	2	3	1	Interpretive Guide	R/T	All	22	\$5,449	\$900	BF,BZ,CT,DC,IM,PC,TB,WT
BBB2	Jul 22-Jul 27	2	3	1	Interpretive Guide	R/T	All	22	\$5,449	\$900	BF,BZ,CT,DC,IM,PC,TB,WT
BBB3	Aug 5-Aug 10	2	3	1	Interpretive Guide	R/T	All	22	\$5,449	\$900	BF,BZ,CT,DC,IM,PC,TB,WT
CONSERVATION JOURNEY: BELUGA WHALES											
CJBW1	Jul 29-Aug 3	2	3	1	Interpretive Guide	R/T	All	22	\$5,749	\$900	AP,BB,BF,BZ,CH,CS,CT,PB,SP,TB
Partial proceeds from this trip will support Ocean Wise.											



Tour code	Dates	Nights Winnipeg	Nights Churchill	Nights Riding Mountain	Tundra Buggy adventures	Leader type	Air	Meals	Tour capacity	Cost	Single supplement	Activities
FRONTIERS NORTH'S BIG FIVE SAFARI												
ENTHUSIAST												
BF1	Jul 17-Jul 24	3	2	2	1	Interpretive Guide	R/T	All	18	\$7,149	\$1,250	BE,BF,BT,BZ,CT,DC,IC,IH,IM,IW,PC,TB,WD
BF2	Aug 2-Aug 9	3	2	2	1	Interpretive Guide	R/T	All	18	\$7,149	\$1,250	BE,BF,BT,BZ,CT,DC,IC,IH,IM,IW,PC,TB,WD
BF3	Aug 9-Aug 16	3	2	2	1	Interpretive Guide	R/T	All	18	\$7,149	\$1,250	BE,BF,BT,BZ,CT,DC,IC,IH,IM,IW,PC,TB,WD
BF4	Aug 16-Aug 23	3	2	2	1	Interpretive Guide	R/T	All	18	\$7,149	\$1,250	BE,BF,BT,BZ,CT,DC,IC,IH,IM,IW,PC,TB,WD



Tour code	Dates	Nights Winnipeg	Nights Riding Mountain	Leader type	Meals	Tour capacity	Cost	Single supplement	Activities
RIDING MOUNTAIN ADVENTURE									
ENTHUSIAST									
RM5	Jun 2-Jun 6	2	2	Interpretive Guide	All	18	\$2,699	\$650	BE,BT,IC,IH,IW,PC,WD
RM6	Jun 9-Jun 13	2	2	Interpretive Guide	All	18	\$2,699	\$650	BE,BT,IC,IH,IW,PC,WD
RM1	Jul 17-Jul 21	2	2	Interpretive Guide	All	18	\$2,699	\$650	BE,BT,IC,IH,IW,PC,WD
RM2	Aug 2-Aug 6	2	2	Interpretive Guide	All	18	\$2,699	\$650	BE,BT,IC,IH,IW,PC,WD
RM3	Aug 9-Aug 13	2	2	Interpretive Guide	All	18	\$2,699	\$650	BE,BT,IC,IH,IW,PC,WD
RM4	Aug 16-Aug 20	2	2	Interpretive Guide	All	18	\$2,699	\$650	BE,BT,IC,IH,IW,PC,WD



Tour code	Dates	Nights Winnipeg	Nights Churchill	Nights Lodge	Tundra Buggy adventures	Leader type	Air	Meals	Tour capacity	Cost	Single supplement	Activities
TUNDRA BUGGY LODGE AT POLAR BEAR POINT												
ENTHUSIAST												
50	Oct 8-Oct 12	2	–	2	2	Interpretive Guide	R/T	All	20	\$6,849	\$285	CT,TB
52	Oct 10-Oct 14	2	–	2	2	Interpretive Guide	R/T	All	20	\$6,849	\$285	CT,TB
71	Nov 2-Nov 7	2	–	3	3	Interpretive Guide	R/T	All	20	\$8,399	\$285	CT,TB
73	Nov 5-Nov 10	2	–	3	3	Interpretive Guide	R/T	All	20	\$8,399	\$285	CT,TB
75	Nov 8-Nov 13	2	–	3	3	Interpretive Guide	R/T	All	20	\$8,399	\$285	CT,TB
56	Oct 14-Oct 19	2	1	2	2	Interpretive Guide	R/T	All	20	\$7,599	\$575	CT,DS,IM,PC,TB
58	Oct 16-Oct 21	2	1	2	2	Interpretive Guide	R/T	All	20	\$7,599	\$575	CT,DS,IM,PC,TB
60	Oct 18-Oct 23	2	1	2	2	Interpretive Guide	R/T	All	20	\$7,599	\$575	CT,DS,IM,PC,TB
54	Oct 11-Oct 17	2	1	3	3	Interpretive Guide	R/T	All	20	\$9,149	\$575	CT,DS,IM,PC,TB
62	Oct 20-Oct 26	2	1	3	3	Interpretive Guide	R/T	All	20	\$9,149	\$575	CT,DS,IM,PC,TB
64	Oct 23-Oct 29	2	1	3	3	Interpretive Guide	R/T	All	20	\$9,149	\$575	CT,DS,IM,PC,TB
66	Oct 26-Nov 1	2	1	3	3	Interpretive Guide	R/T	All	20	\$9,149	\$575	CT,DS,IM,PC,TB
70	Nov 1-Nov 7	2	1	3	3	Interpretive Guide	R/T	All	20	\$9,149	\$575	CT,DS,IM,PC,TB
72	Nov 4-Nov 10	2	1	3	3	Interpretive Guide	R/T	All	20	\$9,149	\$575	CT,DS,IM,PC,TB
74	Nov 7-Nov 13	2	1	3	3	Interpretive Guide	R/T	All	20	\$9,149	\$575	CT,DS,IM,PC,TB
SPECIALIST												
79	Nov 14-Nov 19	2	–	3	3	Photo Specialist	R/T	All	20	\$8,599	\$285	CT,PB,PW,TB
76	Nov 11-Nov 17	2	1	3	3	Photo Specialist	R/T	All	20	\$9,349	\$575	CT,DS,PB,PT,PW,TB
78	Nov 13-Nov 19	2	1	3	3	Photo Specialist	R/T	All	20	\$9,349	\$575	CT,DS,PB,PT,PW,TB
CONSERVATION JOURNEY: POLAR BEARS												
68	Oct 29-Nov 4	2	1	3	3	Interpretive Guide	R/T	All	20	\$9,349	\$575	CT,DS,IM,PB,PC,TB
Partial proceeds from this trip will support Polar Bears International.												



Lately it feels like we’ve been thrust into an ongoing state of emergency response and it is exhausting. Forced to do life in a manner completely different from what we until recently considered normal, we are all doing our best to take care of our basic needs, keep our families safe, our businesses operating and teams gainfully employed.

At the same time, each of us have had the opportunity to step back and reevaluate where we’re at individually and the role we play within our communities. How might our actions benefit those around us?

A couple of months into ‘survival mode’, I received a letter from guests Gretchen and Kit, who travelled with us in 2019. The letter speaks to the favourable experience they enjoyed in their dealings with Frontiers North, from their first interaction with us through to their experiences with our guides in the field, referring to our staff as “the type of people one would like to call a friend.”

In stark contrast to all of the logistical and operational fine-tuning we pour into our guests’ experiences with us, this letter didn’t talk about price, inclusions or our tour compared to another that Gretchen and Kit may have considered; this letter made clear to me how the Frontiers North team made our guests *feel*.

FRONT COVER: JOHN GUNTER
BACK COVER: ROBIN BISWAS

This message could not have been more timely because it speaks to our purpose as a company: to be good stewards of the resources made available to us and to passionately share those resources with our guests. Especially in times of hardship, companies with a strong purpose tend to remain more steadfast in their direction and goals. And Frontiers North Adventures maintains a strong purpose; we have a great team and through it all it remains our pleasure to work hard to make sure your trip with us is as amazing as it can be.

I want to dedicate this letter to all the members of our Frontiers North Adventures team; and say **THANK YOU** for your ongoing contributions that make our guests feel safe and welcome during their precious time invested with us!

John Gunter

President and CEO, Frontiers North Adventures



MEMBERSHIPS



PARTNERSHIPS



TUNDRA BUGGY® IS THE REGISTERED BRAND NAME OF THE CUSTOM-BUILT VEHICLES USED BY FRONTIERS NORTH ADVENTURES FOR OUR CHURCHILL ADVENTURES.



#FINDTRUENORTH

For centuries Polaris, the North Star, has depicted true north, a navigational reference for adventure-seeking explorers in their expeditions across the often-perilous oceans. Our True North is an unwavering love for Canada's North: the extraordinary wildlife, the incredible landscapes, and the remarkable people and their customs. We consider it a privilege to share this awe-inspiring land with visitors from around the world.

Find your True North on an authentic experience with Frontiers North Adventures.

CRUISE
World 

Contact Cruise World on 09 917 4440 | 0800 500 732
info@cruiseworld.co.nz | www.cruiseworld.co.nz

