



Fall in love with **PS EMMYLOU**

Authentic Australian River Cruises



2021
Travelers'
Choice



ECHUCA VICTORIA AUSTRALIA

SEASON 2023/24

Authentic Luxury River Cruising

Cruise along the majestic Murray River at an ambling speed aboard the world's only accommodated wood-fire paddle steamer. PS Emmylou seamlessly blends the old with the new to offer authentic luxury cruises that immerse you in a bygone era but with modern-day comforts.

The old saying 'it's the journey, not the destination' is indeed true for all our cruises, offered as three to seven night all-inclusive experiences. You'll feel the warmth of the 1906 steam engine as the engineer stokes the boiler, you can climb into the wheelhouse to chat to the skipper, or just sit and gaze at the changing reflections in the water. Whether you're captivated by the river, the region's pioneering history or you're yearning for relaxation, PS Emmylou offers it all.

As PS Emmylou, or Emmy as the locals call her, gracefully steers past the twin townships of Echuca Moama and surrounding properties, her celebrity-like status is clear. Children wave to the steamer in the hope of a river greeting whistle, and fishermen in tinnies tip their caps and give a wave to the skipper as they cast their lines.

With a maximum of 16 guests and four crew, the only crowds you'll experience are the flocks of Australian White Ibis feeding in the marshes, Kingfishers hunting for a meal, and mobs of kangaroos. If you're lucky, you may spot a few long-necked turtles warming themselves on a fallen River Red Gum too.

The old-timer cruiser, powered by a 116-year-old steam engine, provides a warm inviting atmosphere of a mid-1800s riverboat but without sacrificing modern conveniences. Each luxury cabin has a private ensuite, is individually air-conditioned, has WIFI and opens directly onto the paddle steamer's large timber deck.



Contents

LUXURY BOUTIQUE AUSTRALIAN RIVER CRUISING	2
OUR HISTORY	3
LUXURY CABINS	4
REGIONALLY-INSPIRED DINING	5
TRANSFERS HOTELS PARKING	6
3 NIGHT DISCOVERY CRUISE	7
4 NIGHT EXPLORER CRUISE	8
7 NIGHT ALL THE RIVERS RUN CRUISE	9
2023-2024 CRUISE DEPARTURES	11
48 HOURS IN ECHUCA MOAMA	12
DRIVING TOURS	13
ECHUCA MOAMA SILO ART TRAIL	15
TERMS & CONDITIONS	17



Luxury Boutique Australian River Cruising

Optional Melbourne Hotel Stay Begins Your Journey

Optional Melbourne Return Transfers

Multi-Course Dining Prepared
By Our Onboard Chef

Complimentary Wine & Beer with Dinner

Riverside Dining & Campfires

Premium Onshore Guided Tours

Authentic Woodfired Paddlesteamer

Daily Historical Commentary

Complimentary Wifi Internet

Maximum 16 Guests Only

Book With
\$400
Per Person



Our History

Echuca Moama

Echuca was founded by an ex-convict named Henry Hopwood, who, after serving time in Port Arthur, worked in a tallow plant on the New South Wales side of the Murray River. In 1850 he built a bark and slab hotel on the Victorian side of the Murray and purchased a small punt to ferry people back and forth from his hotel. In just 16 years, Hopwood helped build a town, known today as Echuca.

Much of Echuca's history is linked to the river. Being the closest town on the river to Melbourne, the Port of Echuca, built in 1865, quickly became the largest inland port in Australia. With the riverboats able to reach inland settlements, the area prospered, and the Murray became a river highway for delivering wool, fruit, mail, other supplies and later passengers - and even towing barges filled with livestock. At the height of its trading days, the Port of Echuca had more than 240 boats traded from its docks.

In the early 1900s, as rail and road transport fastened, the slower river trade slowly declined. These days, a cruise on a paddle steamer or a visit to the historic Port of Echuca is the best way to get a glimpse into the river's illustrious past.

Today, Echuca Moama, the twin towns on either side of the Murray, offers not only a glance into Australia's colonial history and river trade history, but a great range of eateries and bars to indulge in, live music festivals, wineries, many outdoor activities and of course, our favourite, a beautiful sunset over the river.

The Mighty Murray River

It's not difficult to understand how the Murray River got her moniker 'the Mighty Murray'. She stretches over 2,000 kilometres from Kosciusko National Park in New South Wales, through Victoria, to Goolwa, South Australia. The Murray River is the world's third-longest navigable river, behind the Nile and the Amazon.

Aboriginal communities lived alongside the river for more than 40,000 years, and you can still see evidence of Aboriginal habitation dating back thousands of years. Today, the Murray plays a significant role in the agricultural industry for much of inland Victoria and is a significant water supply for more than 1.5 million households.

The Murray offers a unique destination to discover one of Australia's beautiful regions; the riverside towns, the wildlife, and of course, a cruise on an old paddle steamer.

COVID-19 Cruise Well Program

Is it time to reconnect with travel? From bow to stern, we're taking extra measures to ensure your health and safety when onboard the Emmylou. All crew are trained on appropriate hand hygiene and sanitising practices, and we monitor and maintain these practices to the highest standards on every cruise. While there may be a few additional requirements to protect our guests and staff, your experience on the Emmylou has not changed.

For the health and safety of everyone onboard, all passengers and crew are required to be double vaccinated for COVID-19 to cruise with us. Through our Cruise Well Program we follow strict hygiene standards and procedures. We are an accredited, Covid-ready business with NSW Health and ATEC, and in addition, we're recognised by the World Travel & Tourism Council, and the Safe Travel global branding, for our high health and hygiene protocols.



OPTIONAL
PRE/POST
HOTEL STAYS



WINE & BEER
WITH DINNER



ONSHORE TOURS



FREE INTERNET



DELICIOUS
REGIONAL CUISINE



COFFEE, TEA
& SNACKS

Luxury Cabins

WELCOME ABOARD

Relax and enjoy the calm water and tranquil surrounds from your private room on the river.

PS Emmylou features eight contemporary luxury cabins, complete with private ensuites, plush bedding and fine linens. Each cabin has individually controlled air-conditioning and windows that bring in the fresh country air and cabin doors that open directly onto the outside deck or veranda. Complimentary WIFI is also available throughout the boat, including in the cabins.

Please note: complimentary coffee and tea making facilities are available in the Saloon throughout your cruise; there are no fridges or coffee/tea making facilities in cabins.

EMMYLOU QUEEN SUITE

The Emmylou Queen Suite is the boat's premier suite and the most spacious. Located on the upper deck, this elegant suite features plush queen bedding, an ensuite and a seating area. French doors open directly onto the veranda, where you can relax with a drink in hand and take in the ambience as you cruise the Murray River. (12 sqm)

UPPER DECK QUEEN CABIN

The Upper Deck Queen Cabins allow the outside in, with large doors opening directly onto the veranda. A plush queen bed, with private ensuite makes this a perfect haven to retire to in the evenings. (6.5 sqm)

UPPER DECK DOUBLE CABIN

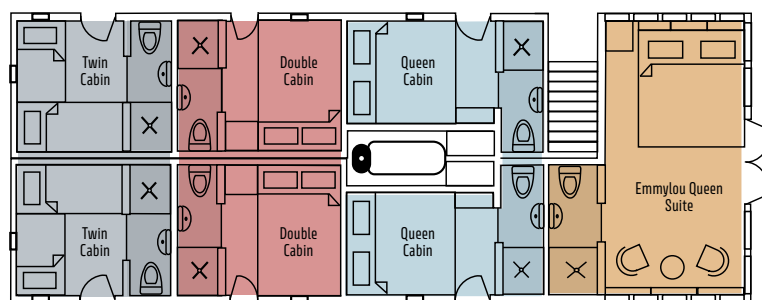
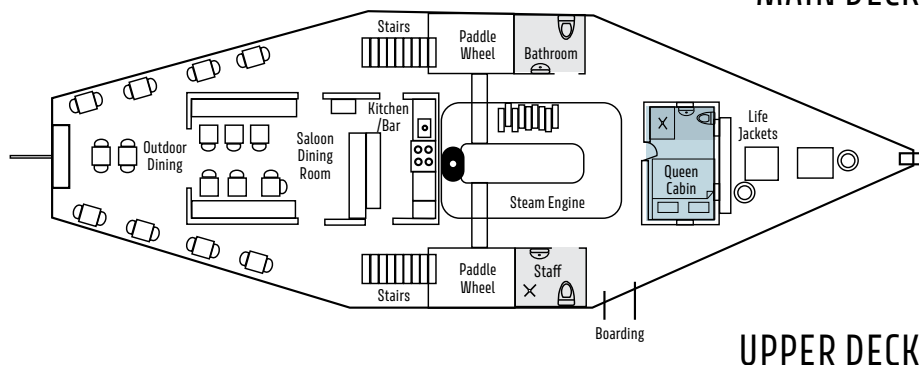
The Upper Deck Double Cabin offers a private and comfy sanctuary. Each cabin has a snug double bed, private ensuite and a door opening directly onto the deck. (6.0 sqm)

UPPER DECK TWIN CABIN

The Upper Deck Twin Cabin offers two full-size single beds, the top bed easily accessible, a private ensuite, and with a door that opens directly onto the deck, so you're sure to get an abundance of natural light. (6.0 sqm)

MAIN DECK QUEEN CABIN

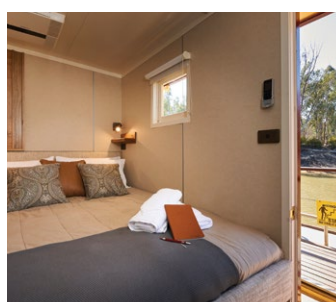
This private cabin boasts a plush queen bed and private ensuite. The cabin is conveniently located on the main deck with close proximity to the saloon. (6.5 sqm)



Twin Cabin



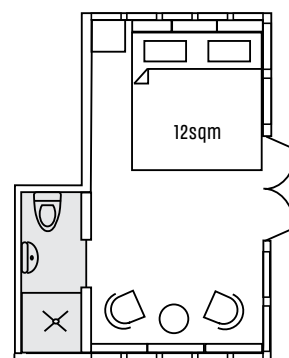
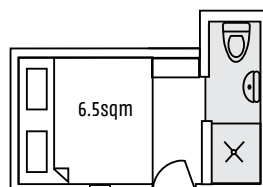
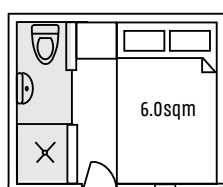
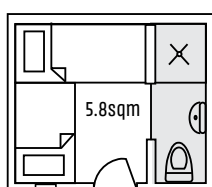
Double Cabin



Queen Cabin



Emmylou Queen Suite





Regionally-Inspired Dining

Inspired by Australia's heartland, our onboard chef takes full advantage of our region's diverse produce to create hearty meals, but with a contemporary flair.

You'll start your day with a range of continental choices, including delicious pastries, cereals and fresh fruit or a traditional full English breakfast – the choice is yours. With our chef arranging morning tea, lunch and afternoon tea, your focus can remain on the day's activities, rather than on an empty stomach. Depending upon the cruising itinerary and any onshore tours, these meals may be hot lunches or gourmet picnics on the riverbank. In the evenings, our chef prepares multi course dinners.

And, what trip to the Murray is complete without a classic Australian BBQ under the southern stars? Watching the sunset from the banks of the Murray is an extraordinary experience. This time of day really amplifies the sounds of the Murray, as the birds prepare to nest for the evening and they flock overhead.

On all our cruises, you'll be invited to pull up a picnic rug and indulge in this Australian tradition, complete with toasting marshmallows for supper!

We deliberately don't allocate meal seating while onboard the Emmylou. You are free to sit with fellow passengers and swap stories over a meal or enjoy a quiet dinner with your partner on the deck. The choice is yours.

A wide variety of drinks, including wine, beer, aperitifs and soft drinks, are available from the bar. We are proud to support our local wineries.

DINING ABOARD EMMYLOU

- Tantalising multi course dinners
- Bountiful continental and full breakfast options
- Traditional morning and afternoon teas
- Vegetarian and gluten-free menu options
- Fabulous choice of local and Australian wines and beverages
- Complimentary selected wine & beer with Dinner service
- Free seat dining
- Seasonal alfresco dining with idyllic river views
- Riverside BBQ dining under the stars on all cruises with live entertainment

Transfers | Hotels | Parking

TRANSFERS

Our service doesn't only start when you board our steamer; we can also arrange for transfers to Echuca by road, rail or air, providing the perfect opportunity to sit back, relax and take in the views of the beautiful Victorian countryside. Our vehicles are owned and operated by Murray River Paddle Steamers, and as well as providing you with a luxury transfer, you'll hear great commentary about the countryside you're travelling through.

Extend Your Experience

HOTELS

Echuca Moama is a destination in its own right and truly worth exploring. Staying a day or two before or after your cruise is a great way to immerse yourself in regional Australia. We're delighted to partner with an award-winning hotel in Echuca conveniently located close to the port and several Melbourne hotels for those travelling further afield. Pre and post-cruise accommodation can be booked directly through Murray River Paddle Steamers.



MERCURE PORT OF ECHUCA HOTEL

Superior King Room \$200 per night

Extend your experience in Echuca with a pre or post-cruise stay at the Mercure Port of Echuca Hotel. Located in the centre of town, within walking distance to the port and High Street shops, our exclusive rate offers you a Deluxe Room featuring a king bed, plasma TV and DVD player, exquisite bathroom, pay-TV and wireless internet access.

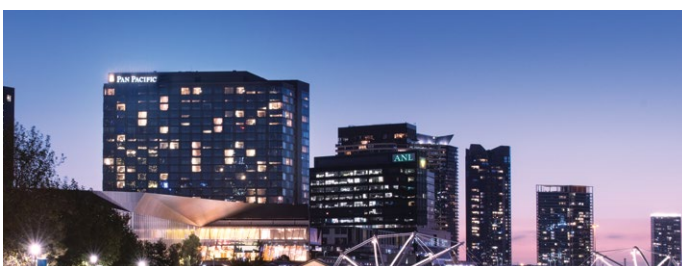
MELBOURNE LUXURY TRANSFERS

Melbourne Return Transfer Only \$680 Per Couple / \$580 Solo Traveller

Departs Pan Pacific Hotel – South Wharf at 10.30am & Park Royal Hotel Melbourne Airport at 11.00 am on the morning of your cruise. Please note pick-ups from Melbourne Airport are only available if staying at the Park Royal Hotel.

ECHUCA SECURE UNDERCOVER CAR PARKING

Secure undercover warehouse parking is available for cruise passengers' cars at a rate of \$25 per day. Prior reservation is required. Please contact us if you have a larger vehicle/caravan.

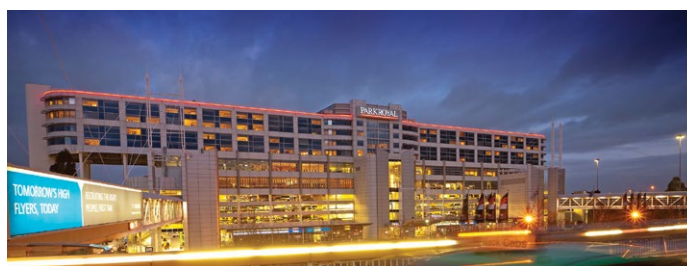


PAN PACIFIC HOTEL MELBOURNE

Pre Stay & Return Transfers \$940 per couple / \$840 Solo Traveller

Pan Pacific Hotel is located near Melbourne's vibrant South Wharf district, right on the waterfront and close to the hustle and bustle of city life. Here, you can begin your holiday in a 5-star Deluxe Room, which includes a delicious full breakfast before you depart for Echuca.

With a leisurely stop in the small town of Nagambie, you'll arrive in Echuca relaxed and ready to board PS Emmylou. Your return journey will take you via the historic city of Bendigo, where you'll get the chance to visit the endearing Chancery Lane known for its great coffee, food and art. Drop off points are Bendigo, Melbourne Airport or a CBD hotel.

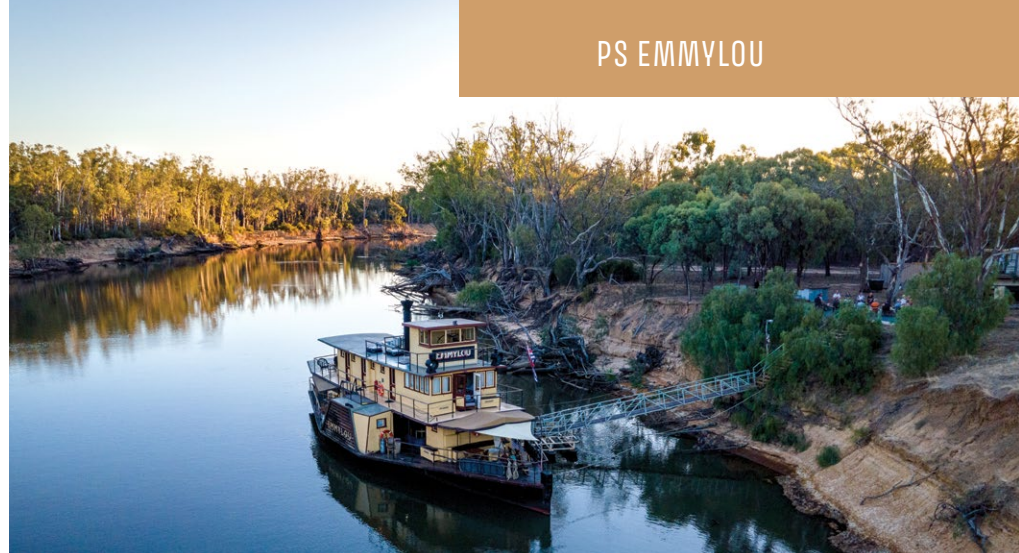


PARK ROYAL HOTEL MELBOURNE AIRPORT

Pre Stay & Return Transfers \$940 per couple / \$840 Solo Traveller

Weekday stays at Park Royal are \$990 per couple & \$890 Solo Traveller

If you're flying into Melbourne and need to relax and unwind before stepping aboard your cruise, a stay at the Park Royal Hotel, Melbourne Airport will have you feeling refreshed. With direct access to Melbourne's international and domestic terminals, a night in one of their large Standard Rooms with a delicious full breakfast, will give you a head start. Please note you must stay overnight at the Park Royal Airport Hotel to be collected from Melbourne Airport before commencing your cruise.



3 NIGHT DISCOVERY CRUISE

- Optional Ex Melbourne

Cruise departs Riverboat Dock, Echuca at 4.00 pm every Friday. Cruise ends 9.30am Torrumbarry Weir. Your cruise fare includes complimentary transfers to and from our secure car park.

HIGHLIGHTS

- Lagoon Wetlands Eco walk & Goulburn or Campaspe River Cruise - Murray Explorer
- Visit Morrisons Riverside Winery
- Guided gardens tour of Perricoota Station where All the Rivers Run was filmed
- Riverside BBQ Dining under the stars, campfire & Live Entertainment (riverside dinner is seasonal)
- Visit Torrumbarry Weir
- Time to absorb the gorgeous surrounding and watch and listen to the local Australian wildlife
- All-day cruising with historical commentary

INCLUSIONS

- Luxury air-conditioned cabin with private ensuite
- All meals including morning and afternoon tea
- Chef prepared Regionally-inspired meals
- Onshore Tours
- Selected wine & beer with dinner service
- Espresso coffee, tea, soft drink & bottled water
- WIFI throughout the boat
- Complimentary transfers from Echuca Train Station or our Secure Car Park

CRUISE PRICES VALID UNTIL 31/03/24

CABIN TYPE	PP TWIN SHARE	SOLO TRAVELER
Main Queen	\$1,740	NA
Upper Twin	\$1,690	\$2,704
Upper Double	\$1,690	NA
Upper Queen	\$1,740	NA
Queen Suite	\$2,100	NA

DAY 1

As you depart Echuca, enjoy an afternoon Devonshire tea, take in the sights and sounds of the river and get to know your fellow cruisers. There's ample time to chat with the skipper in the wheelhouse to learn about PS Emmylou, her river history or simply relax in your private cabin. When the sun begins to set, this marks the start of 'Happy Hour'. Enjoy a drink in the saloon before we arrive at Layfield Lane where we host a grand dinner on the riverbank - our signature Australian BBQ, lit up by candles on the tables and stars in the sky. After dinner, enjoy casual conversation around the campfire with live entertainment before retiring for the evening.

DAY 2

This morning we head off on a half-day excursion first visiting Horseshoe Lagoon, which has great significance to the local Yorta Yorta people. Often described as supermarkets by elders, the lagoon provides a home to native animals. Here you can wander the elevated boardwalk, indulge in some wildlife spotting, and learn about the importance of wetlands and floodplains along the Murray River. It is then time to board the Murray Explorer, cruising to the Goulburn or Campaspe River (river height dependent) where you can get up close to Australian nature. Along the way we will connect the environment and the rich river story from pre-European to the early colonial days of the Riverboats.

After enjoying lunch aboard Murray Explorer, we arrive at Morrisons Riverside Winery where you can enjoy complimentary tastings of their fabulous wines.

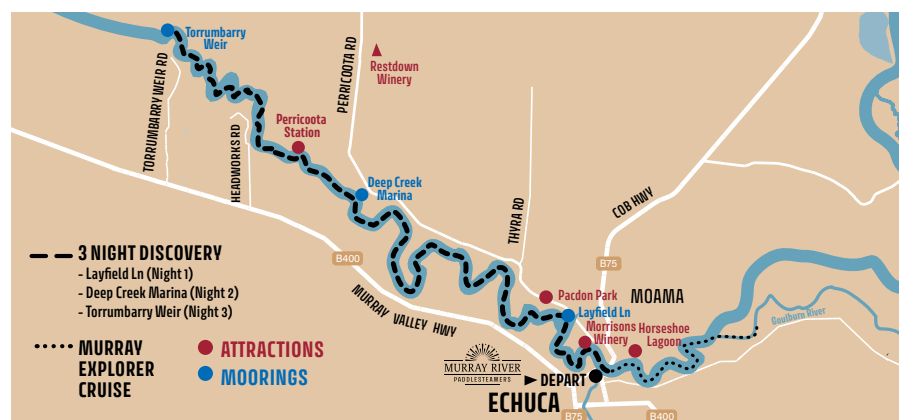
This afternoon relax aboard Emmylou with a fabulous afternoon tea service as you continue steaming down river towards Deep Creek Marina. Tonight, after dinner it's Movie Night with a special presentation of "Riverboats Remembered", a fabulous historical presentation featuring archival footage of the paddle steamers and communities of the Murray River from the early 1900s through to the mid-1970s.

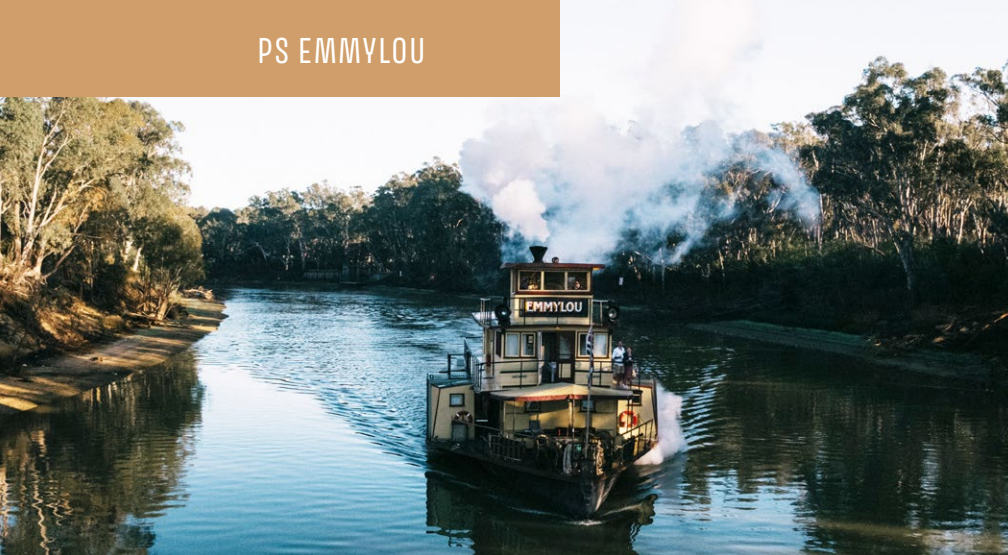
DAY 3

PS Emmylou departs early today for a full day of cruising towards our Torrumbarry Weir with a mid-morning stop at the famous Perricoota Station, the property first settled by James Maiden in 1843, and famous for starring in the TV mini series "All the River Run" where PS Emmylou was renamed PS Providence. Join the skipper for a walking tour of the historical buildings and immaculate gardens of Perricoota Station before Emmylou continues towards Torrumbarry Weir. Upon arrival, you can take a self-guided walk across the weir, visiting the Interpretive Centre and learning about the Murray Darling Basin and the weir and lock system which dates back to 1923. Tonight, we enjoy a delicious dinner hosted by your Skipper with pre dinner canapes and drinks as the sun settles over the weir. Listen to the river birds' evening chorus and watch for kangaroos, wombats and species of birds as the stars begin to appear whilst enjoying dinner.

DAY 4

This morning before breakfast early risers can enjoy a riverside stroll before your courtesy vehicle is ready to return you to Echuca where we reluctantly say farewell.





4 NIGHT EXPLORER CRUISE

- Optional Ex Melbourne

Cruise departs Torrumbarry Weir 4.00pm every Monday. Cruise ends 9.30am Port of Echuca. Your cruise fare includes complimentary transfers to and from Echuca and our secure car park.

HIGHLIGHTS

- Owner led Guided tour of Restdown Winery & wetlands with lunch
- Guided gardens tour of Perricoota Station where All the Rivers Run was filmed
- Lagoon Wetlands Eco walk & Goulburn River Cruise
- Sample award winning local Olive Oil at Murray Gums Estate with the owners
- Riverside BBQ Dining under the stars, campfire & Live Entertainment (riverside dinner is seasonal)
- Time to absorb the gorgeous surroundings and watch and listen to the local Australian wildlife
- All-day cruising with historical commentary

INCLUSIONS

- Luxury air-conditioned cabin with private ensuite
- All onboard meals including morning & afternoon tea
- Onshore tours
- Chef prepared Regionally-inspired meals
- Selected wine & beer with dinner service
- Espresso coffee, tea, soft drink & bottled water
- WIFI throughout the boat
- Complimentary transfers from Echuca Train Station or our Secure Car Park

CRUISE PRICES VALID UNTIL 31/03/24

CABIN TYPE	PP TWIN SHARE	SOLO TRAVELER
Main Queen	\$2,360	NA
Upper Twin	\$2,300	\$3,680
Upper Double	\$2,300	NA
Upper Queen	\$2,360	NA
Queen Suite	\$2,840	NA

DAY 1

As you depart Torrumbarry upstream, enjoy an afternoon Devonshire tea, take in the sights and sounds of the river and get to know your fellow cruisers. There's ample time to chat with the skipper in the wheelhouse to learn about PS Emmylou, her river history or simply relax in your private cabin. When the sun begins to set, this marks the start of 'Happy Hour'. Enjoy a drink in the saloon before a chef-prepared welcome dinner. Listen to the river birds' evening chorus and watch for kangaroos, wombats, and many species of birds as the stars begin to appear. Tonight, we moor at Norris Bend where your crew will have a riverside campfire ready for you to enjoy after diner.

DAY 2

After a hearty breakfast, Emmylou cruises to the famous Perricoota Station, the property first settled by James Maiden in 1843, and famous for starring in the TV mini series "All the River Run" where PS Emmylou was renamed PS Providence. Here you will depart to Restdown Winery, producers of fine organic wines and Hereford beef. Join the property's owners for a guided tour along a 1.4km wetlands walking trail, highlighting items of great Aboriginal significance before a gourmet lunch of local produce and wine tastings.

Arriving back at Perricoota Station the skipper will invite you to walk along the historical buildings and immaculate gardens of Perricoota Station before happy hour. Tonight enjoy a fabulous dinner on the deck on Emmylou overlooking the famous Perricoota Station mansion. Tonight, after dinner it's Movie Night with a special presentation of "Riverboats Remembered", a fabulous historical presentation featuring archival footage of the paddle steamers and communities of the Murray River from the early 1900s through to the mid-1970s.

DAY 3

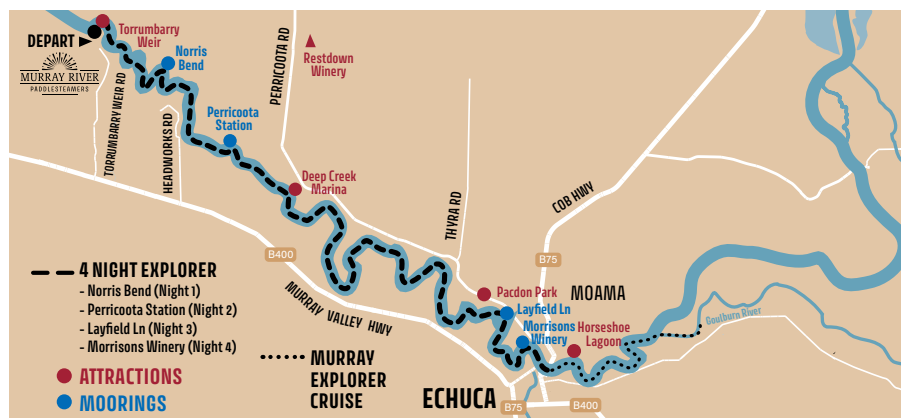
For early risers and keen photographers, the morning mist and wildlife around Perricoota is a sight to behold. After breakfast, Emmylou gracefully steams onwards upstream for a full day of cruising towards our Layfield Lane mooring. Today enjoy lunch on the deck or in the saloon with plenty of time to relax with a good book or just take in the river views. Tonight, enjoy a grand dinner on the riverbank – our signature Australian BBQ, lit up by candles on the tables and stars in the sky. After dinner enjoy casual conversation around the campfire with live entertainment before retiring for the evening.

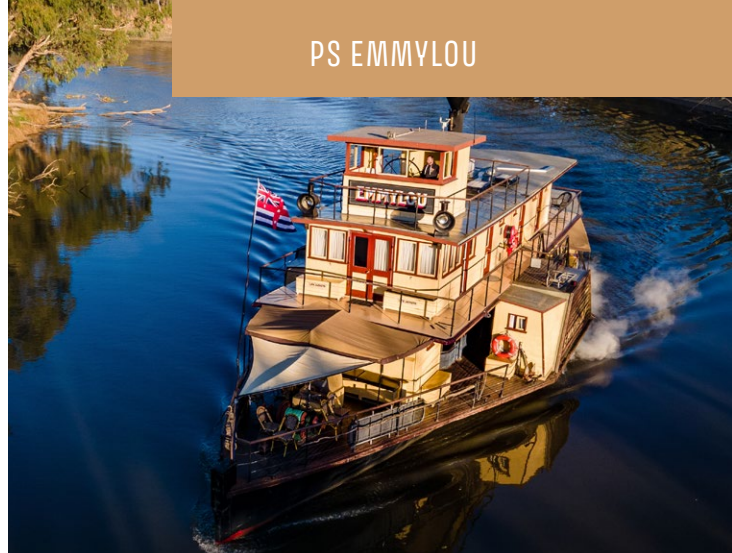
DAY 4

This morning after breakfast we head off on a half-day excursion first visiting Horseshoe Lagoon, which has great significance to the local Yorta Yorta people. Often described as supermarkets by elders, the lagoon provides a home to native animals. Here you can wander the elevated boardwalk, indulge in some wildlife spotting and learn about the importance of wetlands and floodplains along the Murray River. It is then time to board our Murray Explorer, cruising upriver to where the Goulburn River enters the mighty Murray where you can get up close to Australian nature. Along the way we will connect the environment and the rich river story from pre-European to the early colonial days of the Riverboats. After enjoying lunch, we then visit Murray Gums Estate for a tour of their vineyard and display on how their ward winning Olive Oil is made with complimentary tastings. Emmylou then continues downstream mooring overnight at Morrisons Winery overnight.

DAY 5

This morning before breakfast early risers can enjoy a riverside stroll before PS Emmylou then departs for the Port of Echuca where we reluctantly say farewell.





7 NIGHT ALL THE RIVERS RUN CRUISE

- Optional Ex Melbourne

Cruise departs Torrumbarry Weir 4.00pm.
Cruise ends 9.30am Torrumbarry Weir. Your cruise fare includes complimentary transfers to and from Echuca and our secure car park.

HIGHLIGHTS

- Guided gardens tour of Perricoota Station
- Riverside BBQ Dining under the stars, campfires & Live Entertainment (riverside dinner is seasonal)
- Lagoon Wetlands Eco walk
- Goulburn & Campaspe expedition river cruise
- Owner led Guided tour of Restdown Winery & wetlands with lunch
- Silo Arts Tour with lunch at Colbinabbin Pub
- Self-Guided historical walking tour of Echuca
- Visit Morrisons Winery & Murray Gums Estate, sample award winning Olive Oil with the owners
- Ample time to absorb the gorgeous surroundings and watch and listen to the local Australian wildlife
- All-day cruising with historical commentary

INCLUSIONS

- Luxury air-conditioned cabin with private ensuite
- All meals including morning and afternoon tea
- Chef prepared Regionally-inspired meals
- Onshore Tours
- Selected wine & beer with dinner service
- Espresso coffee, tea, soft drink & bottled water
- WIFI throughout the boat
- Complimentary transfers from Echuca Train Station or our Secure Car Park

CRUISE PRICES VALID UNTIL 31/03/24

CABIN TYPE	PP TWIN SHARE	SOLO TRAVELER
Main Queen	\$4,080	NA
Upper Twin	\$3,980	\$6,368
Upper Double	\$3,980	NA
Upper Queen	\$4,080	NA
Queen Suite	\$4,880	NA

DAY 1

As you depart Torrumbarry upstream, enjoy an afternoon Devonshire tea, take in the sights and sounds of the river and get to know your fellow cruisers. There's ample time to chat with the skipper in the wheelhouse to learn about PS Emmylou, her river history or simply relax in your private cabin. When the sun begins to set, this marks the start of 'Happy Hour'. Enjoy a drink in the saloon before a chef-prepared welcome dinner. Listen to the river birds' evening chorus and watch for kangaroos, wombats, and many species of birds as the stars begin to appear. Tonight, we moor at Norris Bend where your crew will have a riverside campfire ready for you to enjoy after dinner.

DAY 2

After a hearty breakfast, Emmylou cruises to the famous Perricoota Station, the property first settled by James Maiden in 1843, and famous for starring in the TV mini series "All the River Run" where PS Emmylou was renamed PS Providence. Here you will depart to Restdown Winery, producers of fine organic wines and Hereford beef. Join the property's owners for a guided tour along a 1.4km wetlands walking trail, highlighting items of great Aboriginal significance before a gourmet lunch of local produce and wine tastings. Arriving back at Perricoota Station the skipper will invite you to walk along the historical buildings and immaculate gardens of Perricoota Station before happy hour. Tonight enjoy a fabulous dinner on the deck of Emmylou overlooking the famous Perricoota Station mansion and river.

Tonight, after dinner it's Movie Night with a special presentation of "Riverboats Remembered", a fabulous historical presentation featuring archival footage of the paddle steamers and communities of the Murray River from the early 1900s through to the mid-1970s.

DAY 3

For early risers and keen photographers, the morning mist and wildlife around Perricoota is a sight to behold. After breakfast, Emmylou gracefully steams onwards upstream for a full day of cruising towards our Layfield Lane mooring. Today enjoy lunch on the deck or in the saloon with plenty of time to relax with a good book or just take in the river views. Tonight, enjoy a grand dinner on the riverbank – our signature Australian BBQ, lit up by candles on the tables and stars in the sky. After dinner enjoy casual conversation around the campfire with live entertainment, before retiring for the evening.





DAY 4

This morning after breakfast we depart on a half-day excursion first visiting Horseshoe Lagoon, which has great significance to the local Vorta Vorta people. Often described as supermarkets by elders, the lagoon provides a home to native animals. Here you can wander the elevated boardwalk, indulge in some wildlife spotting and learn about the importance of wetlands and floodplains along the Murray River. It is then time to board Murray Explorer, cruising upriver to where the Goulburn River enters the mighty Murray. Along the way we will connect the environment and the rich river story from pre-European to the early colonial days of the Riverboats. After enjoying lunch, we then visit Murray Gums Estate for a tour of their vineyard and display on how their award winning Olive Oil is made with complimentary tastings. Emmylou then continues downstream mooring overnight at Morrisons Winery overnight.

DAY 5

This morning we cruise into the Port of Echuca, first built in the 1860s to support the booming river trade and once the largest inland port in Australia. Today you will enjoy a half day tour visiting two spectacular local art silos at Rochester and Colbinabbin where we also stop for lunch at the local pub before visiting the fabulous Kyabram water tank. Returning to Echuca you have time to explore the historical port precinct on a self-guided walking tour or visit the wonderful High Street shops and cafés. Back aboard Emmylou enjoy an afternoon Devonshire tea as Emmylou now cruise back down stream. As the sun begins to set over the towering riverside gums enjoy a drink in the saloon at Happy Hour before we arrive at Layfield Lane where you can again enjoy our signature riverside dining experience. After dinner enjoy some casual conversation with live entertainment around the campfire before retiring for the evening.

DAY 6

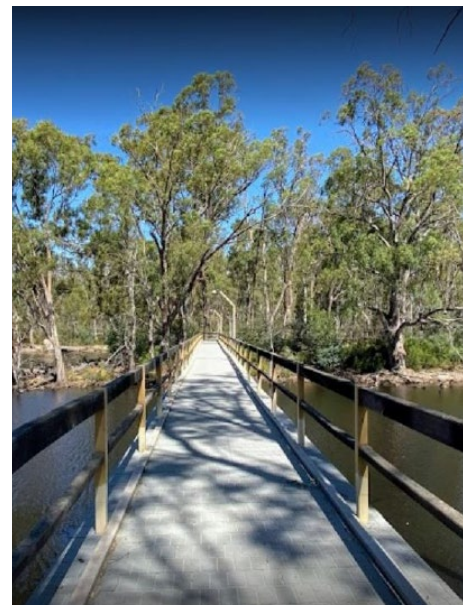
This morning you have the option of pulling up a chair riverside to enjoy a good book, watching the river traffic past by or join the half-day excursion aboard the Murray Explorer visiting the Campaspe River (river height dependant) where you can get up close to Australian nature. You are sure to spot several species of birds including the beautiful Kingfisher as we will connect the environment and the rich river story from pre-European to the early colonial days of the Riverboats. After enjoying lunch, we then visit Morrisons Riverside Winery where you can enjoy complimentary tastings of their fabulous wines. This afternoon Emmylou continues downriver towards Deep Creek Marina.

DAY 7

PS Emmylou departs early today for a full day of cruising with a stop at the famous Perricoota Station before continuing upriver towards Torrumbarry Weir. Upon arrival, you can take a self-guided walk across the weir, visiting the Interpretive Centre, learning about the Murray Darling Basin, weir and lock system which dates back to 1923. Tonight, we enjoy a delicious final night dinner hosted by your Skipper with pre dinner canapes and drinks as the sun settles over the weir. Listen to the river birds' evening chorus and watch for kangaroos, wombats and species of birds as the stars begin to appear whilst enjoying dinner.

DAY 8

This morning before breakfast early risers can enjoy a riverside stroll before your courtesy vehicle is ready to return you to Echuca where we reluctantly say farewell.



2023-2024 Cruise Departures

CRUISE DATES MAY BE SUBJECT TO CHANGE. SUBJECT TO AVAILABILITY.

APRIL 2023

M	T	W	T	F	S	S
					1	2
3	4	5	6	7	8	9
10	11	12	13	14	15	16
17	18	19	20	21	22	23
24	25	26	27	28	29	30

MAY 2023

M	T	W	T	F	S	S
1	2	3	4	5	6	7
8	9	10	11	12	13	14
15	16	17	18	19	20	21
22	23	24	25	26	27	28
29	30	31				

JUNE 2023

M	T	W	T	F	S	S
			1	2	3	4
5	6	7	8	9	10	11
12	13	14	15	16	17	18
19	20	21	22	23	24	25
26	27	28	29	30		

JULY 2023

M	T	W	T	F	S	S
31					1	2
3	4	5	6	7	8	9
10	11	12	13	14	15	16
17	18	19	20	21	22	23
24	25	26	27	28	29	30

AUGUST 2023

M	T	W	T	F	S	S
	1	2	3	4	5	6
7	8	9	10	11	12	13
14	15	16	17	18	19	20
21	22	23	24	25	26	27
28	29	30	31			

SEPTEMBER 2023

M	T	W	T	F	S	S
				1	2	3
4	5	6	7	8	9	10
11	12	13	14	15	16	17
18	19	20	21	22	23	24
25	26	27	28	29	30	

OCTOBER 2023

M	T	W	T	F	S	S
30	31					1
2	3	4	5	6	7	8
9	10	11	12	13	14	15
16	17	18	19	20	21	22
23	24	25	26	27	28	29

NOVEMBER 2023

M	T	W	T	F	S	S
		1	2	3	4	5
6	7	8	9	10	11	12
13	14	15	16	17	18	19
20	21	22	23	24	25	26
27	28	29	30			

DECEMBER 2023

M	T	W	T	F	S	S
				1	2	3
4	5	6	7	8	9	10
11	12	13	14	15	16	17
18	19	20	21	22	23	24
25	26	27	28	29	30	31

JANUARY 2024

M	T	W	T	F	S	S
1	2	3	4	5	6	7
8	9	10	11	12	13	14
15	16	17	18	19	20	21
22	23	24	25	26	27	28
29	30	31				

FEBRUARY 2024

M	T	W	T	F	S	S
			1	2	3	4
5	6	7	8	9	10	11
12	13	14	15	16	17	18
19	20	21	22	23	24	25
26	27	28	29			

MARCH 2024

M	T	W	T	F	S	S
				1	2	3
4	5	6	7	8	9	10
11	12	13	14	15	16	17
18	19	20	21	22	23	24
25	26	27	28	29	30	31



3 NIGHT ONE WAY FROM ECHUCA TO TORRUMBARRY WEIR



4 NIGHT ONE WAY FROM TORRUMBARRY WEIR TO ECHUCA

7 NIGHT RETURN CRUISE – DEPARTS MONDAY'S FROM TORRUMBARRY WEIR





48 Hours in Echuca Moama

Arriving at the twin towns of Echuca Moama nestled on Australia's longest navigable river, replete with Mediterranean climate, you'll be able to boast about visiting two Australian states (NSW & Victoria) in one day.

48 hours in Echuca Moama provides a suggested highlights itinerary to make the most of your stay.



DAY 1

9AM BREAKFAST

Indulge in one of the many coffee spots around town – enjoy breakfast at one of the quaint sidewalk cafes

10AM MID MORNING

Step into the historic Port precinct, wander through the heritage streetscape, taking in the artists at work, the galleries, the winery, fudge shop, blacksmith at work & hop aboard the horse and carriage for a short ride around the town. Browse the displays telling stories of the river trade at the Port of Echuca Discovery Centre & the historic wharf.

11AM WHARF TO WINERY

Indulge in Australia's most unique restaurant aboard one of the Australia's historic Paddlesteamers, while cruising the river.

Take the Wharf to Winery cruise, enjoying lunch at Morrisons Winery overlooking the vineyards & river.

2.30PM EARLY AFTERNOON

Having spent a leisurely few hours dining on or near the river, ramp it up with a visit to the strawberry farm (October – May) to pick your own strawberries and have a mid afternoon strawberry ice cream – breathe in the strawberry aroma while the luscious red berries are succulently warm and ready for tasting.

4PM LATE AFTERNOON

Call into the great Aussie Beer Shed on the way home to Echuca and marvel at the Australiana collection and unlock the stories of many facets of Australian life. Back in town refresh at your accommodation and take a walk along the banks of the river through the stands of river red gums. Enjoy dusk with the setting sun as the birds fly in and sing their evening songs.

8PM DINNER

Dine at one of Echuca Moama's signature restaurants – the choice is yours! Local produce from the nearby farms and fruit and vegetable gardens are showcased on the menus. Tasting the local wines or craft beers you'll be spoilt for choice.

DAY 2

7AM EARLY MORNING

For those that like some early morning activity – jump on a stand-up paddleboard (SUP) and literally walk on water! Savour the stillness of the morning, with the light streaming through the river red gums with a pale pink sky and the fresh clear morning air – you'll never want to leave! For those who would prefer an early morning walk or jog, the river setting provides for a great meditative experience – one you won't forget.

9 AM BREAKFAST

To cool off, sit in one of the outdoor cafes or indulge in one of the many quaint little cafes around town! A smoothie, a caffeine heart starter or tingling fresh water is a great way to refresh after the early morning activity.

10AM MID MORNING

Wander the Historic Port Precinct and High Street Shops. Visit the Echuca Historical Society for a history lesson of the river and local communities.

12 NOON LUNCH

Feed your appetite with a lunch at one of our many eating spots – Mediterranean, Vegan, Pub or Asian are all there for you to try.

2PM EARLY AFTERNOON

A short drive to the township of Kyabram 30 minutes away you'll find a quaint little Australian town where there is still a glimmer of yesteryear. Shop, visit the Kyabram Town Hall with its quality art and fashion exhibitions, don't miss the Kyabram Fauna Park with its up close and personal Australian animal experiences and drop into the camel farm for an interesting encounter with the camels.

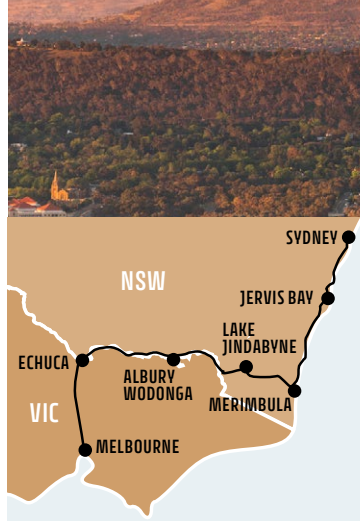
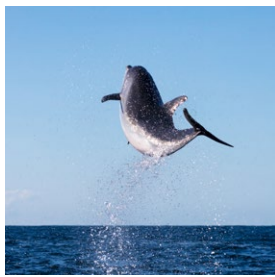
4PM LATE AFTERNOON

To complete the day pop into the, flour mill or local pub – they all provide an insight into the unique way of Australian life.

7PM EVENING

In winter book dinner at one of the many local pubs with a roaring fire. In summer become part of the local scene and enjoy some of the balmy evenings in the beer gardens, clubs, pubs or music venues.





SYDNEY TO MELBOURNE COAST & COUNTRY EXPLORER ROUTE – VIA ECHUCA

HIGHLIGHTS

- Join a local Aboriginal guide for an insightful look into the lives of the local Yuin people.
- See kangaroos playing in the waves at Peppy Beach.
- Explore incredible exhibits at MAMA – Murray Arts Museum Albury.
- Indulge the taste buds on a food fossicking tour in Bendigo.

DAY 1

Exchange urban views for the natural wonders of the coast as you begin the drive south to Melbourne via Echuca. The route takes you over the Sea Cliff Bridge which curves around the cliffs, floating 665 metres above the ocean waves. Arriving at Jervis Bay. Here, you'll find glorious white sandy beaches plus a mischievous pod of resident dolphins that play in the bay all year round.

DAY 2

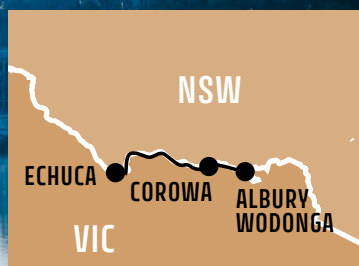
Take your time as you head onwards today. Ulladulla is only a short drive from Jervis Bay but packed with art galleries and treasured curio shops. Seafood lovers should check out the Oyster Shed on Wray Street as you pass through Bateman's Bay. Meandering ever southwards Bermagui is a pretty, coastal village famed for the crystalline blue waters that surround it and the famous Blue Rock Pool. From this charming spot continue to Merimbula.

DAY 3

Today is a real road-trip. The route takes you deep into the legendary Snowy Mountains passing Lake Jindabyne and Mt Kosciuszko as you follow the Kosciuszko Alpine Way. Your destination is the twin cities of Albury Wodonga, straddling the Murray River.

DAY 4

Today you're heading for Echuca Moama. Named after the Aboriginal word for 'meeting of the waters,' Echuca was once one of the busiest ports on the Murray River. Now, the twin towns of Echuca Moama are steeped in history. As you stroll along Murray Esplanade, where heritage buildings now house vibrant shops and cafes, the atmosphere of a bygone age is almost tangible. Time to board your PS Emmylou overnight cruise before ending your tour in Melbourne via Bendigo.



ALBURY TO ECHUCA – MURRAY RIVER ROUTE

HIGHLIGHTS

- Explore Murray Arts Museum Albury.
- Visit Corowa's Federation Museum & Whisky Factory
- Relax on Lake Mulwala or discover riverside walking tracks
- Indulge in the many gourmet food produced at Rich Glen Olive Estate.

DAY 1

Head for Corowa following the Riverina Highway west through countryside patchworked with emerald farmland. Arrive in Corowa and discover a town that played a big role in federation, leading the charge to unite Australia's six colonies. The fascinating story is detailed at the Corowa Federation Museum, which also houses a collection of historic Aboriginal artefacts. Sample more of the region at Corowa Whisky and Chocolate, occupying 1920s flour mills now a on-site distillery producing a fiery single malt, plus port, sherry and bourbon, alongside handmade chocolate blocks and bars.

DAY 2

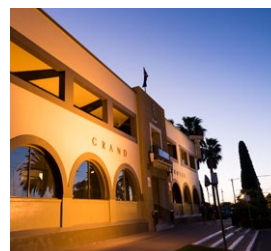
Head to Yarrawonga-Mulwala. These twin cities occupying each bank of the Murray wraps up by



skirting man-made Lake Mulwala. This redgum-ringed reservoir boasts enormous populations of cod and crayfish. Explore walking trails, rent a kayak and soak up the serenity while bird-watching.

DAY 3

The journey from Mulwala to Tocumwal hugs the river, passing the Big Reedy Lagoon Wildlife Reserve (a twitcher's paradise) along the way. Visit the historic Aerodrome Museum, which tells the story of Tocumwal's significance during WWII. The day's final 110km journey to Echuca is where you can board PS Emmylou for your overnight cruise departing from the Port of Echuca, once the third-largest port in Australia, behind only Sydney and Melbourne.



ADELAIDE TO ECHUCA – FOLLOW THE MURRAY ROUTE

HIGHLIGHTS

- Sip wine at quaint cellar doors in Victoria & South Australia
- Explore the largest open range Zoo in the world
- Cross in NSW from Mildura and explore NSW Perry Sandhills
- Step back in time with a visit to the Swan Hill Pioneer Settlement

DAY 1

Head from Adelaide to Murray Bridge where your Murray River drive adventure really begins. Along the way enjoy the heritage town of Hahndorf in the Adelaide Hills known for its cool-climate wines and Australia's oldest surviving German settlement. Stop by the Murray Bridge Regional Gallery where you'll find contemporary craft and artworks.

DAY 2

This morning visit the fabulous Monarto Safari Park, the largest open-range Zoo in the world. It is then time to check out Caudo Vineyard before heading to Renmark where you can relax and enjoy some outstanding food and wine from Banrock Station Wine and Wetland Centre.

DAY 3

It is time to cross the border driving 1.5 hours to Mildura in Victoria, a town of rugged nature and

quiet charm. Cross the border into NSW to visit the Perry Sandhills perfect for a picnic and then finish the day at Red Cliffs Lookout where you will find auburn cliffs carved by the Murray River.

DAY 4

Say goodbye to Mildura and set your sights on Swan Hill. It's about a 2.5 hour drive, but be sure to take your time as you weave alongside rivers and lakes. After you arrive in Swan Hill, explore the nearby Pioneer Settlement. Set on the banks of the Little Murray River, the Settlement tells the history of the Murray River with horse-drawn vehicles, blacksmiths, print shops.

DAY 5

A short drive to Echuca where you can board PS Emmylou and experience the Port of Echuca precinct. In the 1870s, this was the third-largest port in Australia, behind only Sydney and Melbourne.



ADELAIDE TO ECHUCA – INLAND GOURMET TRAIL

HIGHLIGHTS

- Visit world heritage Naracoorte Caves and experience the underground world
- Savour the delights of the premier Coonawarra wine district
- Explore the Southern Grampians and dine at the renowned Royal Mail Hotel
- Delve into Australia Gold Rush history visiting Sovereign Hill, Ballarat
- Uncover Bendigo's fabulous Art and Food culture

DAY 1

This morning rise early for the drive to Naracoorte in the limestone region of South Australia. Visit the Australian Fossil Mammal site, then visit the natural wonders of the Naracoorte Caves National Park with guided tours in the Alexandra and Victoria caves.

DAY 2

Today visit the Coonawarra wine region, world-renowned for its Cabernet Sauvignon. See why it's called the Bordeaux of Australia, with 30 winery cellar doors. Visit historic Wynns Coonawarra Estate featuring the famous triple-gable roof and stone buildings, and Rymill Coonawarra with its full-sized bronze dancing horses, art and viewing gallery.

DAY 3

Today we cross the border into Victoria visiting the beautiful city of Hamilton and the Hamilton Galley, before arriving in the Southern Grampians at Dunkeld. Visit the famous Royal Mail Hotel where

the mountains provide a stunning backdrop for a fine dining experience and overnight stay.

DAY 4

Set your sights on Gold Country with a visit to Ballarat and Sovereign Hill, a recreated gold rush town and outdoor museum. Explore tunnels, shops, streetscapes and pan for real gold. If staying longer book an overnights stay at Craig's Royal Hotel. It's then time to visit Bendigo, the original gold rush boom town and home to the Centre Deborah Gold Mine. Explore its vibrant arts hub and world-class food and wine scene, set against rich gold-rush history, grand architecture and magnificent gardens.

DAY 5

A short drive to Echuca where you can board PS Emmylou and experience the Port of Echuca precinct. In the 1870s, this was the third-largest port in Australia, behind only Sydney and Melbourne.

ECHUCA MOAMA

Silo Art Trail

SMALL TOWNS & SURROUNDS



It's big, it's bold, it's beautiful, and it's no wonder that the popularity of silo art has boomed across Australia over the past six years.

The Echuca Moama region and surrounds is home to three spectacular art silos and one art water tank. Follow the map in this brochure and explore our other art and cultural attractions along the way.

ROCHESTER

The Rochester GrainCorp Silos were the first silos painted in the Echuca Moama region and are the work of artist, Jimmy Dvate. Completed in 2018, the silos feature two threatened local species, the azure king fisher and the wrist-winged squirrel glider.

18 Ramsay St, Rochester

Nearby:

- **Iddles Lane:** Former Victoria Police homicide detective, Ron Iddles, has been commemorated in his hometown of Rochester. The Iddles Lane mural was painted by Tim Bowtell and celebrates the achievements of one of the state's most respected detectives.
- **Mural Park:** Located off Moore Street in Rochester, Mural Park features a selection of 2.1m x 4.8m murals created as part of the annual Rochester Mural Festival. New murals are added each year.

- **Rochester Sports Museum:** View more than 4,000 exhibits showcasing Australia's sporting history, including Adam Gilchrist's wicket-keeping gloves, one of Greg Norman's iconic hats, and a tennis dress worn by Martina Navratilova.

COLBINABBIN

The six-silo art mural in Colbinabbin was painted by Tim Bowtell in 2020, and depicts significant moments from the town's history, including its important links to agriculture, community, environment and the construction of the railway. Collins St, Colbinabbin

KYABRAM WATER TANK

The Kyabram water tank, owned by Goulburn Valley Water, is the most recent addition to the Echuca Moama region's silo art. Painted by Jimmy Dvate in March 2021, it features the Kyabram Fauna Park wetlands and some of the wildlife that inhabit them, including the eastern long neck turtle, golden whistler, red-capped robin, yellow crimson rosella, Major-Mitchell's cockatoo, endangered plains-wanderer, spotted-tail quoll, blue skimmer dragonfly, brolga and a bush tone-curlew. Cnr Drum & Union St, Kyabram

Nearby:

- **Kyabram Town Hall Gallery:** Housed in the historic town hall building, the gallery is one of the largest in the region and showcases regional artists, touring exhibitions and a changing exhibition program of vintage clothing.
- **Tongala:** Visit Tongala and marvel at the 40+ street murals painted on buildings and fences around the town centre. The Hay Bale Trail also pops up at Christmas and Easter, with local artists and farmers coming together to add even more colour to this artistic town. 15 mins drive from Kyabram.

- **Stanhope:** Visit dedicated country music venue, the Neon Horse; the Many Makers Gallery; Shaque-a-Taque with its miniature villages and handcrafted gifts; and the Fonterra Mural, which features thousands of individual photos that create one enchanting artwork. 15 mins drive from Kyabram
- **Girgarre Sound Walk:** A hands-on musical journey through town, using repurposed materials to create interactive musical instruments. 15 mins drive from Kyabram, 8 mins drive from Stanhope.

PICOLA

Around 45 minutes drive from Echuca Moama is the Picola art silo, which was painted by Jimmy Dvate in 2020. It features the culturally significant Barmah National Park and some of the wildlife that calls it home. The silos are still operational and located on private land, however can be viewed from the roadside. 25 Moran St, Picola

ECHUCA MOAMA

While staying in Echuca Moama, be sure to visit some of the local art experiences on offer.

- **Galleries:** Customs House Gallery, Foundry Arts Space, Whistlestop Gallery; Port Atelier & Alton Gallery
- **Museums:** Port of Echuca Discovery Centre, Echuca Historical Society Museum, National Holden Museum, Chanter Estate Military Museum, and The Great Aussie Beer Shed and Heritage Farm Museum
- **Outdoor art:** David Maughan's Les Belle Helen II sculpture in the Moama Botanic Gardens, Geoff Hocking's Long Paddock sculptures near the Moama Soundshell and Timber Cutters sculptures at Edward River Bridge picnic area, Corey Thomas's Long Paddock sculptures at the Mathoura Visitor Information Centre, and Jimmy Dvate's mural on the side wall of the Gunbower Hotel.

Trail map



Visit echucamoama.com to see more art experiences from around the region and the Campaspe Arts Trail map.

Suggested Route

*MAP NOT TO SCALE

Echuca Moama
The Murray's living legend

To get firsthand local information and to book your Echuca Moama experience visit the **Echuca Moama Visitor Centre**. Free call **1800 804 446**, visit the website www.echucamoama.com or find us right on the river, just before the bridge at 2 Heygarth Street, Echuca.



Terms & Conditions

General

The transportation of guests and baggage aboard the vessel/s is governed by these Terms and Conditions. Please carefully read the terms of this cruise agreement.

Your payment of deposit or full fare constitutes agreement to these terms and conditions which includes limitations and exonerations of the liabilities and obligations of Carrier. You should read and understand these terms and conditions carefully before making a deposit. The vessel/s is operated by Australian Paddlesteamers Pty Ltd, trading as Murray River Paddlesteamers (MRPS) and is regularly inspected by the Australian Maritime Safety Authority, AMSA.

Definitions

The terms "you" and "Guests" refer to any and all person(s) named on the front of the Confirmation and include all children or others under the care or control of the named person(s). The term "Carrier" includes Murray River Paddlesteamers, its parent and affiliated entities, the vessels, the owners, charterers, operators, agents, and masters and crews thereof, any substituted or connecting ship, the owners, charterers and operators and all launches belonging to any such boat or owned or operated by the owners, charterers or operators. The term "Fare" includes voyage and shore excursions purchased from Carrier.

Fares are in Australian Dollars, are per guest, are based on double occupancy, and do not include air or land transport. Single Occupancy Fares carry a 60% surcharge. Port charges are included in the fare. All fares, itineraries, themes, entertainment, shore excursions and other voyage attributes are subject to change without notice and we reserve the right to not honour any published prices that we determine were erroneous due to printing, electronic or clerical error.

Deposit and Final Payment

For confirmation of individual bookings, a non refundable deposit of \$400 of the full fare per person is due upon booking online & within 3 days if booking direct or via a travel agent. The balance of the voyage fare is due ninety days (90) prior to departure date, and all reservations not fully paid at such time will be cancelled and subject to the cancellation provisions set forth in the cancellation policy below. MRPS accepts the following forms of payment: MasterCard, Visa & Bank Transfer. A credit card surcharge between 1.20% - 1.70% may be incurred for credit card payments depending on the credit card used. Domestic Australian Bank Transfers incur no surcharge or cost. International Bank Transfers incur a minimum A\$15 fee which must be added to the payment made. Bookings made ninety (90) days or less prior to the departure date require payment in full at the time of booking.

Cancellation and Change Policy

Guests who must cancel or change the date of their voyage or any part of their package for any reason, including medical or family reasons, are subject to the fees as outlined below. All fares are based on double occupancy; on reservations in which one guest cancels, the remaining guest is responsible for paying any and all single supplements. MRPS reserves the right to cancel all reservations for which final payment is not received ninety (90) days prior to the departure date. You acknowledge that your cancellation will cause MRPS difficulty in selling a replacement cruise and thus the cancellation fees herein apply regardless of whether your cruise is resold. You agree that any losses sustained by MRPS in the event of cancellation would be very difficult or impossible to quantify and the cancellation fees are fair and reasonable as liquidated damages. The following cancellation fees will be assessed for all written cancellations received prior to departure up to the scheduled time of departure. Any approved booking changes will incur a administration fee of A\$150 per change.

Days Prior to Departure

Up to 91 days	Loss of Deposit
90-61 days	50% of gross fare
60-0 days	100% of gross fare

MRPS recommends that all guests obtain travel insurance for unforeseen circumstances which also covers COVID-19.

Included in your fare

- Bottled water/softdrink
- All meals • Coffee & Tea
- Selected Wine & Beer with dinner
- All standard shore excursions
- Wi-Fi Internet access aboard the vessel
- Gratuities to vessel crew

Not included in your fare

- Airfare to and from your home city
- Alcoholic beverages not stated
- Travel Insurance
- Transfers to and from Melbourne

Payment for additional goods and services must be made prior to the guest's disembarkation. Card only payment. No cash is accepted.

Documentation

Final travel reminder, including itinerary and passenger cruise information guide will be sent 30 days prior to departure. Itineraries are subject to change without notice.

Health & Disability Requirements

Guests must notify MRPS in writing at the time of booking of any physical or mental illness, disability or other conditions for which special accommodations or the use of a wheelchair is necessary or contemplated. Also, we must be notified of any medical treatment that may render the guest unfit for travel or constitute a risk or danger to the guest or anyone else aboard. The vessel does not carry a medical doctor aboard. Acute medical conditions will require you to disembark to be attended to by shore-side emergency and/or medical response. Guests needing any form of assistance and those who are physically disabled must be accompanied by someone who will take full responsibility for any needed assistance during the cruise and in the event of an emergency. We reserve the right to refuse passage to anyone who, in our sole opinion, may affect the health, safety or enjoyment of other guests. Guests requiring a wheelchair must provide their own collapsible wheelchair. Please be aware that some ports of call, shore excursions, docks, gangways and other requirements may preclude a wheelchair guest from leaving the vessel; this decision will be made by the ship's captain and is binding. Also, there may be certain physical conditions, including stairways and narrow passageways within the vessel that may limit or preclude the accessibility of wheelchair guests to some areas. We strongly recommend you purchase travel insurance. With travel insurance, you can plan and enjoy your trip with complete peace of mind.

COVID-19 Health

Before booking and before you travel, ensure you check the latest government travel requirements and our website which will also include onboard protocols. All guests cruising aboard PS Emmylou must be fully vaccinated against COVID-19 as defined from time to time by the Australian Technical Advisory Group on Immunisation (ATAGI) and show satisfactory proof of vaccination to our crew at the time of boarding. This policy also applies to all Murray River Paddlesteamers Crew. For the safety and wellbeing of all guests and crew, if a guest records a high temperature and tests positive to COVID-19 whilst cruising with us, they will be required to isolate in their cabin before being disembarked for a PCR test. This will include any other person traveling in the same cabin. No refunds or future cruise credits will be offered for guests not being able to complete their cruise aboard PS Emmylou. Guests who have a current medical exemption from receiving an ATAGI-approved COVID-19 vaccine (specifying the nature of the exemption and the basis on which it applies), must show the endorsed medical exemption to the crew at the time of boarding. All passengers must complete the Pre-Cruise Health Questionnaire at check-in and comply with management directions, including having their temperature taken before and during the cruise. Guests must comply with the captains instructions regarding all COVID-19 hygiene and social distancing requirements.

Contracting COVID-19 prior to your cruise

The week before your cruise we recommend guests self isolate and avoid high-risk settings where possible. If you cannot cruise due to contracting COVID-19 within 7 days of departure a future cruise credit or refund will not be offered. We ask that you purchase comprehensive travel insurance that includes coverage for this event.

Smoking

Smoking is not permitted anywhere aboard the vessel including inside cabins and suites.

Dining Arrangements

MRPS offers open-seating for breakfast, lunch and dinner. To make a seating request with other guests aboard please contact us.

Gambling

Gambling is not permitted on the Vessel/s.

Animals

Only designated service animals are permitted aboard. You are required to notify MRPS in advance of departure if you plan to bring along a service animal because of a disability. Supporting documents may be requested.

Carrier's Discretion

As the Carrier, we reserve the right at any time, without notice, to cancel any cruise or Cruise Tour, to change or postpone the date or time of sailing or arrival, to change the port of embarkation or final destination, to shorten the cruise or to change or substitute any component of the Cruise Tour.

If we are required to do any of these things, we will be responsible to you as follows:

If we cancel the cruise or Cruise Tour before it has started, we will refund the Cruise Fare that we have actually received. If the scheduled sailing date or time is delayed and as a result of that delay, you are not otherwise accommodated on board the Ship, we may arrange hotel accommodations and food at no additional expense to you for the duration of the delay. If the cruise is shortened, we will make a proportionate refund of the Cruise Fare. MRP responsibility does not extend beyond the vessel, and whenever passengers leave it, any arrangements made by them or for them are at their own risk.

Limitation on Carrier's Liability

- (a) No liability for certain events. The Carrier and the vessel/s shall not be liable for loss, death, or delay of, or injury to, any passenger or loss or damage or delay to his/her baggage, personal effects or other property, arising from: acts of God, public enemy, government restraint, riots, strikes, lockouts, labour troubles, whoever may be the instigators thereof, epidemic, civil disturbances of whatever nature, perils of the rivers, or other navigable waters, fuel shortages, collision, stranding, fire, theft, barratry, or any other crime by any person, faults or errors of navigation or management of this or any other vessel, explosions, breakage of shafts or any defect or seaworthiness in hull, machinery or appurtenances, equipment, furnishings or supplies of the vessel or launches or vehicles or any defect of the Carrier's premises, at whatever time existing, fault or neglect of pilots, tugs, regular members of the crew, agents, servants, independent contractors.
- (b) Limitation on Carrier's liability with respect to baggage and personal property. This liability shall not exceed one hundred Australian Dollars in the event of loss, damage or delay to any of the passenger's baggage or other property taken with him/her on the voyage.

Guest Warranties.

You warrant that you and all other Guests traveling with you are physically, emotionally and otherwise fit to undertake the cruise or Cruise Tour; that you and they have received all medical inoculations necessary; that you and they will at all times comply with the Ship's rules and regulations and orders and directions of the Ship's Captain and officers, and that your conduct will not impair the safety of the Ship or jeopardize or inconvenience other Guests. We may disembark at any time any Guest who may be suffering from contagious or infectious diseases or whose presence, in the opinion of the Captain, may be detrimental to the comfort or safety of other Guests or the crew. In such cases, the Guest shall not be entitled to any refund of the cruise fare or Cruise Tour fare or any compensation whatsoever.

Alcohol Policy

The sale and consumption of alcoholic beverages will be limited to Guests who are 18 years or older. MRPS promotes the responsible service of alcohol and will refuse service to guests if deemed to be intoxicated. Guests are kindly reminded to consume alcohol in moderation. MRPS reserves the right to prohibit and retain all liquor brought onto vessels which is strictly prohibited.

Use of Likeness

Carrier has the exclusive right to use video and other visual/audio portrayals of you or your likeness taken during your cruise in any medium of any nature whatsoever for any purpose, including advertising or promoting the services of Carrier without any compensation being paid to You. Any such portrayal or likeness shall be the exclusive property of the Carrier.

Children

Due to the nature of the cruise and travel itineraries, the Carrier does not maintain facilities or services on its vessels for individuals under the age of 18 years. You must be 18 years old on or before the day you are scheduled to embark on the cruise tour.

Non-Transferrable Tickets

- (a) Your authority to agree. In buying the passenger ticket you state that you are authorised by or on behalf of any passenger listed on the ticket (including any minor) to agree to all the terms and conditions of this agreement.
- (b) No transfer. This agreement is between the Carrier and the passenger. It cannot be sold, assigned or transferred to any other person without prior express written consent of the Carrier. MRPS reserves the right to approve amendments to bookings which will incur a \$150 administration fee per change.

Australian Consumer Law

Nothing in these Terms and Conditions operates to exclude, restrict or modify any provisions of the Competition and Consumer Act 2010 (Cth) or any equivalent laws applicable in any State or Territory in Australia.

Terms and conditions are subject to change without notice and we are not responsible for errors or omissions therein.




MURRAY RIVER
PADDLESTEAMERS
Authentic Australian River Cruises

For reservations contact your travel agent:

CRUISE
World

Contact Cruise World on 09 917 4440 | 0800 500 732
info@cruiseworld.co.nz | www.cruiseworld.co.nz

Selected photos courtesy of Destination NSW