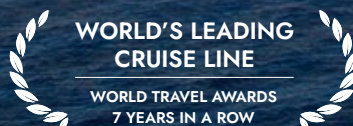


# HAWAII CRUISING GUIDE

2023-2025



4 ISLANDS IN 7 DAYS | DEPARTING YEAR-ROUND | OVERNIGHT STAYS IN MAUI & KAUA'I



# FEEL FREE TO FIND YOUR HAPPY PLACE

When you cruise with NCL®, you're free. Free to dine, dance, laugh, explore and relax — free to follow the sun instead of a schedule. Discover incredible culinary experiences with the freedom to dine when and where you want. Light up your nights with the best entertainment at sea. Sip handcrafted cocktails at your favourite bar or lounge. On NCL, your journey is just as exciting as your destination, so take to the sea and find out what it means to Feel Free.







## WELCOME ABOARD

Why Cruise NCL.....	4
---------------------	---

## YOUR DESTINATION

Hawai'i Port Highlights.....	6
Shore Excursions.....	11
Itinerary.....	12
Cruisetour.....	13

## EXPLORE YOUR SHIP

Accommodation.....	14
--------------------	----

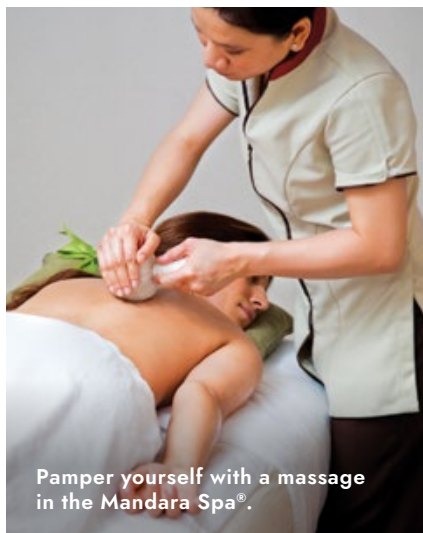


# THIS IS HOW YOU HAWAI'I

When it comes to cruising Hawai'i, it's our thing. But once you hop the Hawaiian Islands with NCL, it will become your thing. Only NCL visits four uniquely different islands in seven days— with overnight stays in Maui and Kaua'i. Giving you plenty of time to hike along a majestic waterfall, step back in time during a visit to Pearl Harbor and then take in the dazzling show at an authentic lū'au. It's a Hawai'i cruise holiday experience that stays with you from sea to summit to stories you'll share for years to come. Because Hawai'i has a way of doing that to you.



Honolulu, Hawai'i



Pamper yourself with a massage in the Mandara Spa®.

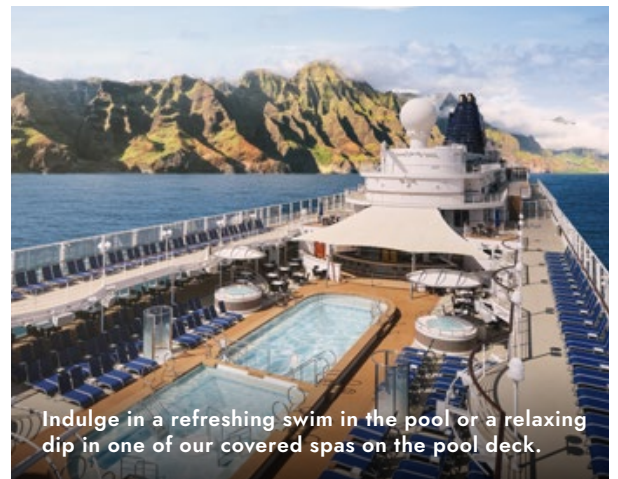


Feel Free to dine when you want — and where you want — with plenty of options for all types of palates.



With a variety of bars and lounges, there's something for everyone on board.







# HONOLULU, O'AHU

The stunning Pacific Ocean and Ko'olau Range mountains serve as a dramatic setting for Hawai'i's largest city. Climb to the top of Diamond Head, take a romantic sunset stroll on Waikiki Beach, visit Pearl Harbor to pay your respects or take a surfing lesson at Waikiki Beach.



Green Sea Turtle, Hawai'i



Diamond Head, Honolulu, Hawai'i





Maui, Hawai'i

TWO DAYS

## KAHULUI, MAUI

A surplus of natural splendour and the genuine hospitality of its people have helped to make Maui Hawai'i's second most popular island. Delight in the breathtaking sight of whales breaching just metres away from your excursion boat. Meander through the tropical gardens of Maui Nui Botanical Gardens. Plant yourself on a pristine beach or play a round on one of the world's most beautiful golf courses. Feel like shopping? Take a short drive to Lahaina to explore the souvenir shops and galleries on world-famous Front Street.



Breaching Humpback Whale, Hawai'i



# HILO, BIG ISLAND

Located on the lush windward side of Hawai'i's Big Island, Hilo is the starting point to explore the eastern part of this breathtaking isle. Drive the 18-kilometre rim of Kilauea volcano and marvel at the dramatic lava formations of Volcanoes National Park. At the majestic Akaka Falls, water cascades more than 120 metres into a pool below. Take a stroll through the splendid Liliuokalani Gardens, an authentic Japanese garden created in the early 1900s.



Frangipani, Hawai'i



Hilo, Hawai'i

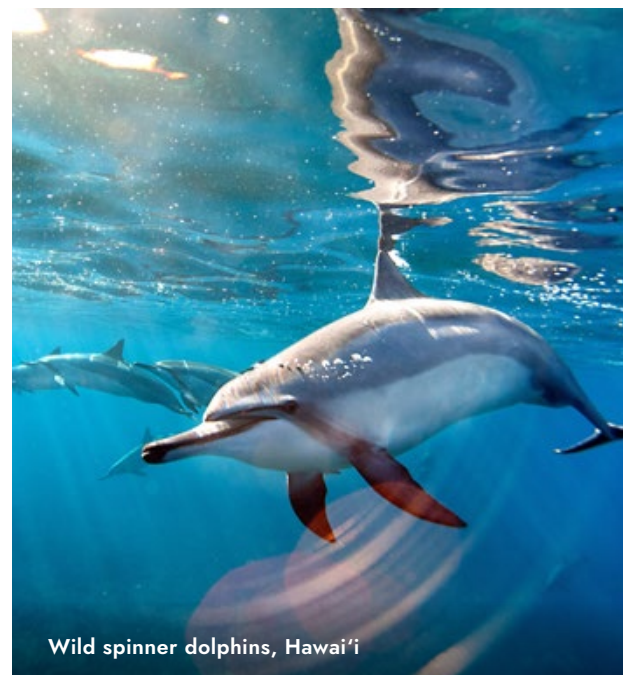




Kona, Hawai'i

## KONA, BIG ISLAND

Kona offers the quintessential Hawai'i experience. Sunny, warm weather and crystal blue waters entice visitors to partake in a variety of surfside fun. Snorkel amongst a kaleidoscope of tropical marine life. Take a surfing lesson, a kayaking trip or head out to deeper waters for some deep-sea fishing.



Wild spinner dolphins, Hawai'i



TWO DAYS

## NĀWILIWILI, KAUA'I

Named after the Wiliwili trees, which once lined its picturesque harbour, the lovely city of Kaua'i is your gateway to what many believe to be Hawai'i's most beautiful island. On "The Garden Island," nature is truly the star, from the dramatic mountains of Kōke'e State Park to the cool rainforests of Hā'ena State Park. And the tradition of the lū'au adds lively entertainment unique to Hawai'i.





# GO WITH THE FLOW

From sacred sites, waterfalls and breathtaking volcanic landscapes to traditional Hawaiian lū'aus, local delicacies and more, there is always something to experience in Hawai'i. Go to Mountain Thunder coffee plantation and indulge in generous samplings of Hawai'i's most iconic products on a culinary adventure. Or dive into the Pacific for an up-close view of the magnificent underwater world of Maui aboard an Atlantis Submarine. Immerse yourself in deep green lushness and explore the rich nature and unique culture of each individual island you visit with incredible shore excursions available at every port.



## EXPLORE ON SHORE

### WHY BOOK YOUR SHORE EXCURSIONS WITH NCL:

- ▶ Our shore excursion partners have been carefully vetted, and all proper health and safety guidelines are followed so that you can focus on what's important — immersing yourself in the spectacular
- ▶ Never get left behind. If a NCL-organised tour is late, the ship will wait for you
- ▶ One-stop shopping for all ports on your itinerary
- ▶ No hidden costs for transfers or entrance fees — the price you see is what you pay
- ▶ Dedicated pre-cruise specialists to help you with your tours
- ▶ Leverage the knowledge and experience of onboard consultants during your cruise
- ▶ Be one of the first off the ship in every port of call
- ▶ Peace of mind knowing your tours are run by insured operators
- ▶ Flexibility to modify or cancel excursions without penalty up to 48-hours prior to arrival into port. Any exceptions are noted in the tour descriptions

READY TO START YOUR STORY?  
PLAN AND RESERVE YOUR  
SHORE EXCURSIONS TODAY.



Kaua'i, Hawai'i



Hilo, Hawai'i





Hula Dancers, Hawai'i



Hilo, Hawai'i

7-DAY HAWAI'I INTER-ISLAND  
ROUND-TRIP HONOLULU



DAY	PORT	ARRIVE	DEPART
Sat	Honolulu, O'ahu		7:00 pm
Sun	Kahului, Maui	8:00 am	Overnight
Mon	Kahului, Maui	—	6:00 pm
Tue	Hilo, Hawai'i	8:00 am	6:00 pm
Wed	Kona, Hawai'i*	7:00 am	5:30 pm
Thu	Nawiliwili, Kaua'i	8:00 am	Overnight
Fri	Nawiliwili, Kaua'i	—	5:30 pm
Sat	Honolulu, O'ahu	7:00 am	

DEPARTURE DATES

PRIDE OF AMERICA 2023	2024	2025
Aug 5, 12, 19, 26	Jan 6, 13, 20, 27	Jan 4, 11, 18, 25
Sep 2, 9, 16, 23, 30	Feb 3, 10, 17, 24	Feb 1, 8, 15, 22
Oct 14, 21, 28	Mar 2, 9, 16, 23, 30	Mar 1, 8, 15, 22, 29
Nov 4, 11, 18, 25	Apr 6, 13, 20, 27	Apr 5, 12, 19, 26
Dec 2, 9, 16, 23, 30	May 4, 11, 18, 25	May 3, 10, 17, 24, 31
	Jun 1, 8, 15, 22, 29	Jun 7, 14, 21, 28
	Jul 6, 13, 20, 27	Jul 5, 12, 19, 26
	Aug 3, 10, 17, 24, 31	Aug 2, 9, 16, 23, 30
	Sep 7, 14, 21, 28	Sep 6, 13, 20, 27
	Oct 5, 12, 19, 26	Oct 4, 11, 18, 25
	Nov 2, 9, 16, 23, 30	Nov 1, 8, 15, 22, 29
	Dec 7, 14, 21, 28	Dec 6, 13, 20, 27

Itineraries listed are representative. Ports-of-call order and times may vary.  
Visit [ncl.com](https://www.ncl.com) for more information. \*Tender port.



## O'AHU EXPLORER - HYATT WAIKIKI CRUISETOUR

11-DAY CRUISETOUR ON PRIDE OF AMERICA  
FROM HONOLULU, O'AHU, HAWAI'I

Hawai'i is a magnificent meld of lush rainforests, sky-high waves, ancient kingdoms, World War II history and beauty of volcanic proportions. And now Norwegian Cruise Line lets you explore O'ahu's top attractions in depth on a land-based tour before your 7-day cruise. Experience the traditions of some of Hawai'i's original inhabitants at the Polynesian Cultural Centre and Kualoa Ranch. Wander through the surfing town of Haleiwa, part of O'ahu's legendary North Shore where surfers hang ten. Re-live the sights and sounds of the events leading up to the attack on O'ahu through several interpretive displays at the Pearl Harbor Visitor Center and walk in General MacArthur's footsteps on the Surrender Deck of the battleship *USS Missouri*.

Discover what paradise means to you, whether it's pounding the surf, exploring the mountains and untouched beauty of Kualoa Mountain Ridge, or learning an authentic hula dance. There's so much to see, do and experience.



O'ahu, Hawai'i



Kualoa Ranch Experience

4-DAY PRE-CRUISE LAND TOUR.  
7-DAY CRUISE. 5 PORTS.

Your Amazing Cruisetour Holiday Includes:

- 3 nights of first-class ocean-view or city-view accommodation at the Hyatt Regency Waikiki Beach Resort & Spa
- Scenic drive of O'ahu's North and South shores
- Polynesian Cultural Center with guide
- Pearl Harbor Tour including Pearl Harbor Visitor Center Experience, USS Bowfin, USS Missouri, Pacific Aviation Museum and the National Memorial Cemetery of the Pacific
- Kualoa Ranch Experience
- 7-day Hawai'i inter-island cruise on Pride of America®





## GET A FRESH PERSPECTIVE

With dramatic, ever-changing views from your private balcony, you'll have a new perspective almost every day. In our Suites, you'll be pampered with a deluxe array of complimentary amenities and personal service from a butler and concierge. And all of our Balcony Staterooms feature comfy sitting areas, convertible or pullman beds and plenty of storage space. If you're looking for an accommodation option for two, a little more space for your family or the convenience of connecting staterooms, there's a choice that's right for you.



**Balcony Stateroom**

\*Square metre, stateroom configuration and capacities may vary.





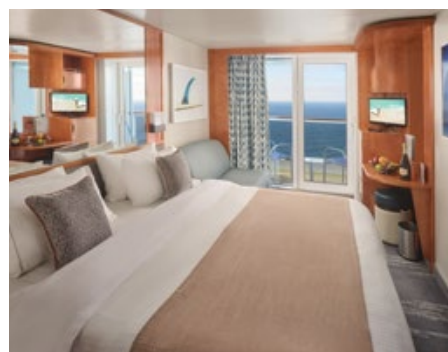
### OWNER'S SUITES

Our Deluxe Owner's Suites and Owner's Suites range from 63-128m<sup>2</sup>\*, include a king-size bed and luxury bath with hot tub. They feature a large living/dining room with double sofa bed and two TVs. Sleeps up to six\*.



### PENTHOUSES & FAMILY SUITES

Our Penthouses offer 45-82m<sup>2</sup>\* and have a king- or queen-size bed, luxury bath with extra-large shower and tub, living/dining area and a balcony featuring sweeping ocean views. Sleeps up to six\*. Our Family Suites offer 31-60m<sup>2</sup>\* and feature one bedroom with a queen-size bed and a separate children's bedroom, bathrooms with extra-large showers, tubs and private balconies with amazing ocean views. Sleeps up to eight\*.



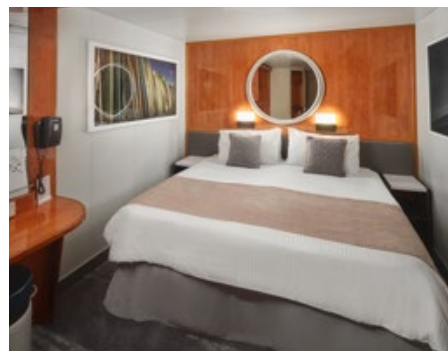
### BALCONY STATEROOM

Our Family Balcony Stateroom places you near all the kid-friendly action, including our complimentary youth programs and the pool deck. And you'll have 17m<sup>2</sup>\* of space, including the balcony, where the family can relax, recharge and get ready for more good times. Our Balcony Stateroom provides you with brilliant views and from 17-27m<sup>2</sup>\* of living area. Sleeps up to four\*.



### OCEANVIEW STATEROOM

Highlighted by a beautiful view of the water, our Oceanview Staterooms offer 13-21m<sup>2</sup> of space and two lower beds that convert to a queen-size bed. With additional bedding, some Oceanviews accommodate up to four\*.



### INSIDE STATEROOM

If you plan on spending your holiday dining, playing and enjoying the entertainment, you won't be spending much time in your stateroom. This makes this accommodation option the perfect choice for active or budget-conscious travellers. They're comfortable and stylish, accommodating up to four in 12-20m<sup>2</sup> of living space.\*



### STUDIO

Our award-winning Studios offer approximately 10m<sup>2</sup>\* and are an industry first, giving solo cruisers the most affordable, stylish way to cruise. Studio guests also have access to their own private Studio Lounge, open morning and night.



# THERE'S NO BETTER VALUE AT SEA THAN FREE AT SEA



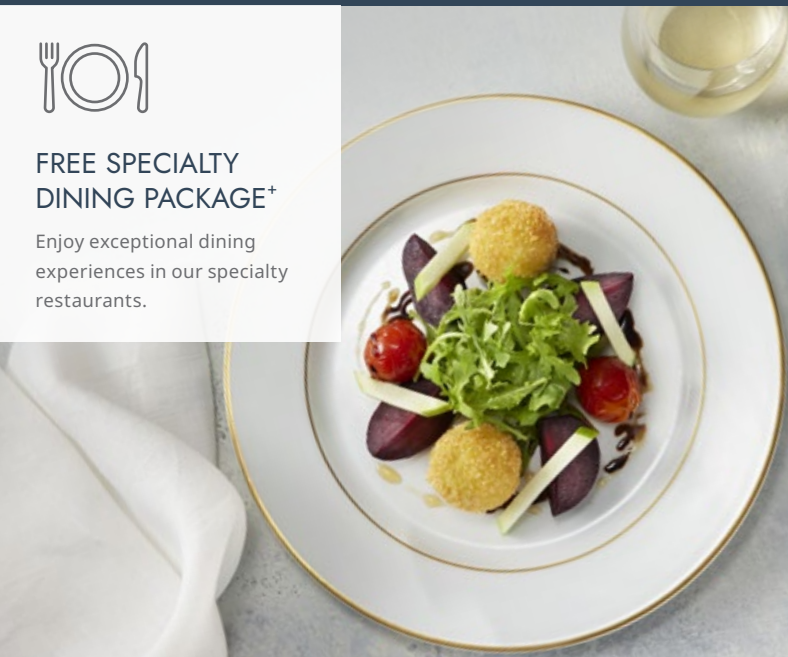
## FREE BEVERAGE PACKAGE<sup>+</sup>

Includes a wide choice of premium branded beverages – from spirits and draft or bottled beer, wines by the glass and cocktails to alcohol-free beer, soft drinks and juices. Children and teenagers are offered unlimited juices, soft drinks and water.



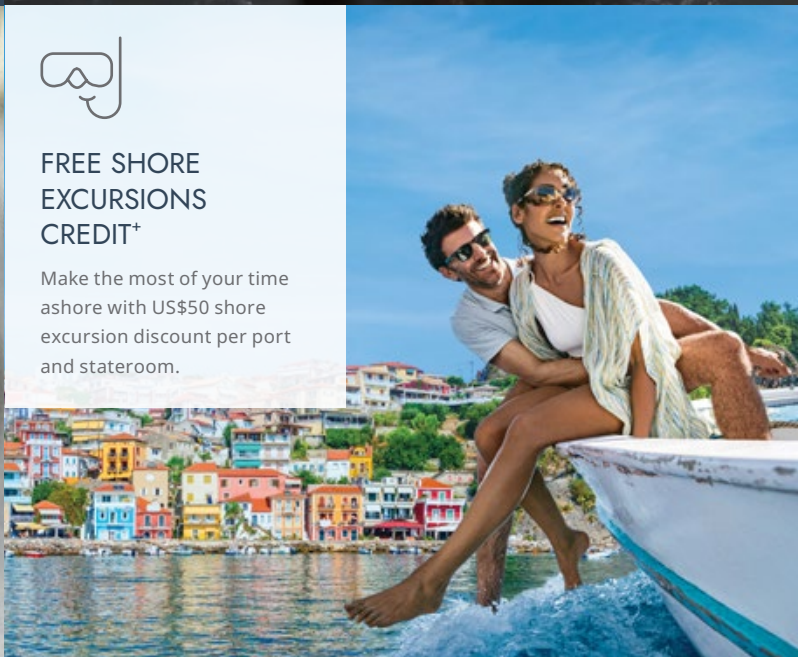
## FREE SPECIALTY DINING PACKAGE<sup>+</sup>

Enjoy exceptional dining experiences in our specialty restaurants.



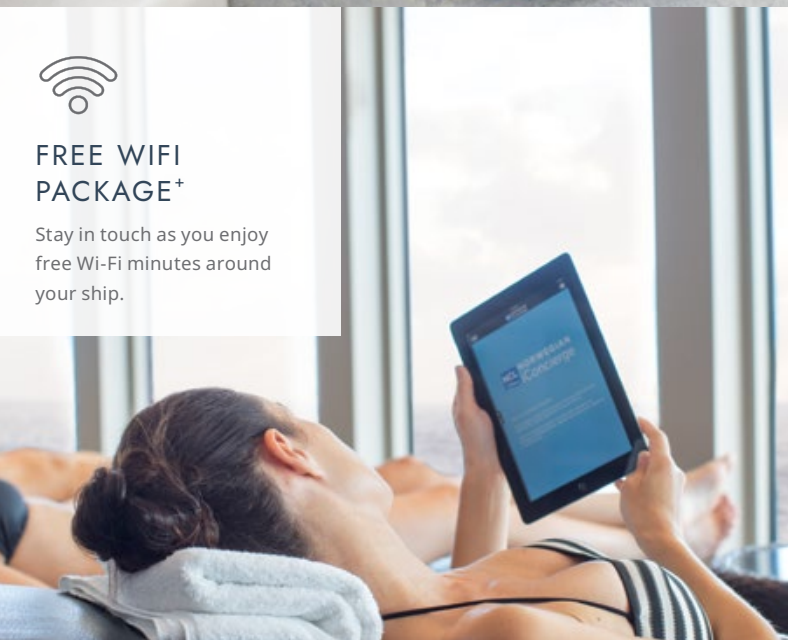
## FREE SHORE EXCURSIONS CREDIT<sup>+</sup>

Make the most of your time ashore with US\$50 shore excursion discount per port and stateroom.



## FREE WIFI PACKAGE<sup>+</sup>

Stay in touch as you enjoy free Wi-Fi minutes around your ship.



## FRIENDS AND FAMILY SAIL AT A REDUCED RATE<sup>+</sup>

Feel Free to bring the whole party as 3<sup>rd</sup> and 4<sup>th</sup> guests in the stateroom pay taxes only on select sailings.



**CRUISE  
World**

For bookings and enquiries contact

Cruise World Ltd  
PO Box 302 421,  
North Harbour,  
Auckland

Ph: 09 917 4440  
Out of AKL agents 0800 500 732  
[www.cruise-world.co.nz](http://www.cruise-world.co.nz)  
email: [info@cruise-world.co.nz](mailto:info@cruise-world.co.nz)

**NCL NORWEGIAN  
CRUISE LINE®**

<sup>+</sup>Free Beverage Package & More: Shore excursion credit is US\$50 per excursion & port and is applicable to 1st guest in the stateroom. 3rd and 4th guests sail at a reduced rate only valid on selected dates and selected cruises. Sailaway categories receive US\$50 shore excursion credit offer only. Offers are non-transferable, have no monetary value and are valid for new bookings only. Offers are subject to change or withdrawal at any time and combinability with other promotional offers is subject to change. Other restrictions may apply. For full terms and conditions visit [ncl.com](http://ncl.com). ©2023 NCL Corporation Ltd. NCL Australia Pty. Ltd. ABN 80 607 578 781. Ships' Registry: Bahamas and USA. 989131 06/2023.