

MS EUROPA

THE WORLD'S BEST MOMENTS



HAPAG ¹⁸/₉₁ LLOYD
CRUISES



EXCELLENT
LUXURY



THE MOST BEAUTIFUL WAY TO EXPLORE THE WORLD

Enjoy the highest level of comfort, impeccable service and unrivalled freedom to plan your own perfect day on a cruise with no more than 400 guests. Feel at home around the globe in your elegant suite. Embark on a culinary journey of discovery at a total of five first-rate restaurants. Come on board and enjoy the peaceful luxury on MS EUROPA.



WHAT MAKES THE EUROPA SO UNIQUE?

- › A crew-to-guest ratio of almost one to one
- › The highest level of indulgence in The Globe by Kevin Fehling as well as culinary diversity in four other first-rate restaurants
- › Outside suites only, most with verandas
- › EUROPA Refresh: new inspirational ideas for fitness, health and wellness
- › Inspiring cultural activities and renowned experts on board
- › Peaceful luxury and a friendly atmosphere

LIVING – AT HOME ON THE WORLD'S OCEANS

Every **SUITE** is inviting – just like an elegant home, but at sea. Each is equipped with all the facilities you would expect, and designed so that you have plenty of space to yourself. What's more, the view changes every day.



Veranda Suite (category 4–5)

With their subtle colours, harmonious design and visually divided living and sleeping areas, the Veranda Suites fulfil your requirements for a cosy, private retreat. Additional connecting doors in some suites provide the option of making your family cruise even more comfortable.

Selected equipment features

- › 27 m² (290 ft²) suite with a veranda (cat. 4–5)
- › 24-hour suite service
- › Visually divided living and sleeping area; bathroom with bathtub and separate shower; walk-in wardrobe
- › Nespresso machine
- › One hour of free Internet per day
- › Free mini bar that is refilled daily with water, juices, soft drinks and beer
- › Some suites can be booked with connecting doors or are equipped for use by disabled guests

FINE CUISINE – WHERE CREATIVITY MEETS SKILL

There are no limits to the culinary delights served in our **FIVE RESTAURANTS**. Whether you choose the creations of popular three-star chef Kevin Fehling or caviar in its finest form and other delicacies outside on deck, enjoy gourmet cuisine.



SIX BARS – WELCOME IN THE EVENING

Fine drinks in a stylish atmosphere in one of the **SIX BARS**. You can enjoy a unique ambience and excellent drinks in each of the stylish locations.



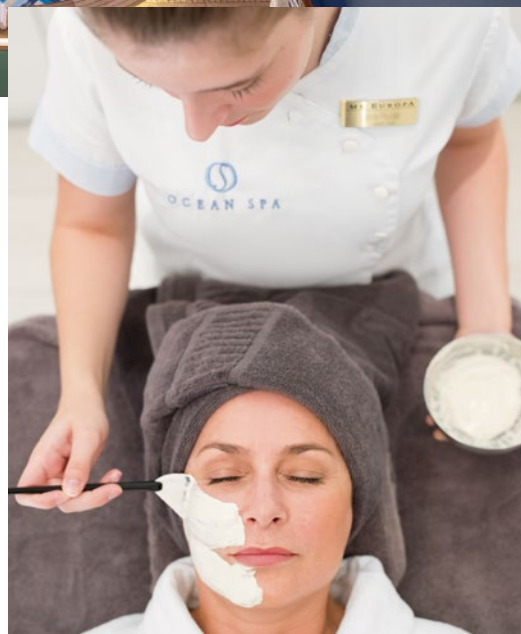
LEAVE YOUR WORRIES FAR BEHIND

Welcome to a world of precious moments, where the focus is exclusively on you and your needs. Our wide range of fitness and wellness services on board the EUROPA offer the perfect way for you to recharge.



The OCEAN SPA offers everything you need for personal well-being: plenty of space for saunas, professional cosmetic treatments and revitalising massages as well as a modern fitness studio.

There is also a 15 m (49 ft) long seawater pool, whirlpool and jogging trail.



WE TAKE RESPONSIBILITY

In order to ensure that the habitats on our planet are preserved in the future, a responsible approach to our environment is indispensable. That is why the EUROPA even sails under the 5-star-plus flag when it comes to environmental protection. It is also important to us that we comply with the highest hygiene standards so that we can protect the health of everyone on board.

Environment Management and Commitment



We are committed to helping people and nature in cruise destinations worldwide – also together with specialised partners and organisations.



Seawater desalination technology on board for our own treatment of drinking water.



100 % self-produced water.



Certified biological sewage treatment plants clean all wastewater that is produced.



Eco-friendly waste separation prior to disposal on land in accordance with the MARPOL regulations.



Already since 2020, we have been using marine gas oil with a maximum sulphur content of only 0.1 %.

By voluntarily foregoing heavy fuel oil, we are reducing sulphur emissions and particulate emissions.



THE CRUISE PRICE (CRUISE ONLY) INCLUDES THE FOLLOWING, A.O.:



- › Full-board: main meal times, snacks, light meals, late breakfast, speciality teas and coffees as well as cakes and midnight snacks
- › 24-hour suite service; butler service in the Penthouse Suites, Champagne and delicacies as a welcome gift, Mini bar (soft drinks and beer) and fresh fruit, refilled daily
- › A different entertainment programme every day with presentations, concerts, workshops and a high-quality evening programme (e. g. with live shows or readings)
- › Free use of the on-board facilities and equipment, e.g. sauna, fitness area with a varied range of activities, 15 m (49 ft) long seawater pool, golf simulator, library, email and internet (free of charge for one hour per guest per day; more information on internet use at www.hl-cruises.com/internet), snorkelling equipment and bicycles*
- › Flat-screen TV in your suite with entertainment and information system (guest portal)
- › Zodiac rides to hidden beaches and bays (subject to routes and weather conditions)
- › Harbour fees
- › Cancellation fee insurance**

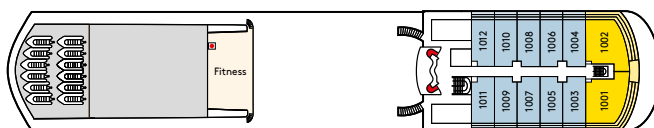
* Limited allotment for bicycles: subject to official approval.

** 20 % excess

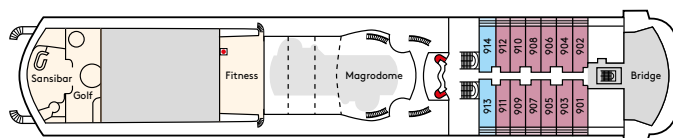


DECK PLAN

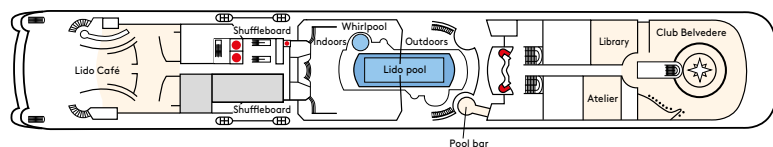
Deck 10



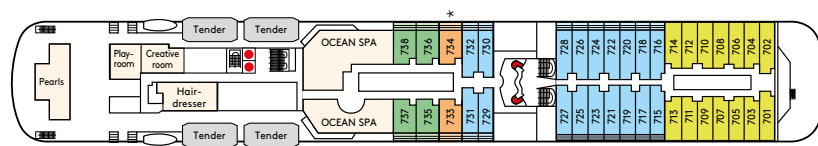
Deck 9



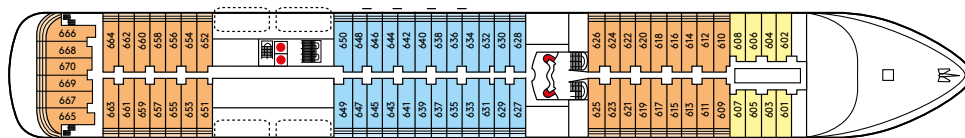
Deck 8



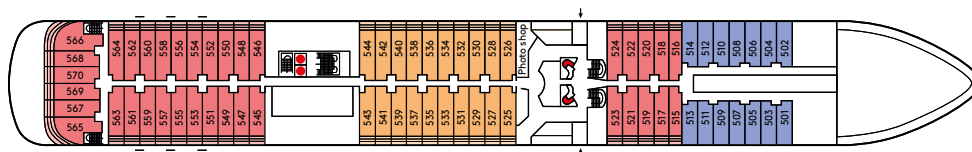
Deck 7



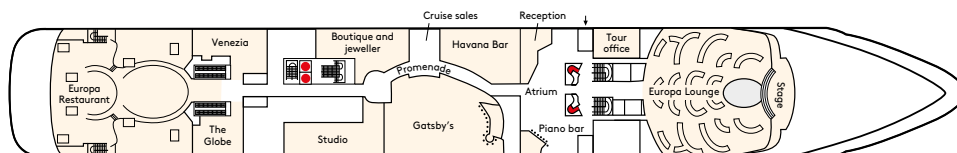
Deck 6



Deck 5



Deck 4



Suite without veranda (approx. 27 m ² / 291 ft ²)	Suite without veranda (approx. 27 m ² / 291 ft ²)	Suite without veranda (approx. 27 m ² / 291 ft ²)	Veranda Suite (approx. 27 m ² / 291 ft ²)	Veranda Suite (approx. 27 m ² / 291 ft ²)	Veranda Suite (approx. 27 m ² / 291 ft ²)	Veranda Suite (approx. 27 m ² / 291 ft ²)	Penthouse Deluxe Suite (approx. 45 m ² / 484 ft ²)	Penthouse Grand Suite (approx. 85 m ² / 915 ft ²)	SPA Suite (approx. 27 m ² / 291 ft ²)
Cat. 1	Cat. 2	Cat. 3	Cat. 4	Cat. 5	Cat. 6	Cat. 7	Cat. 8	Cat. 9	Cat. 10

Public areas - Suites with connecting doors * Suites with fully accessible layout and equipment Lift Glass lift Tendering area

- The suites 913 and 914 have been priced as category 6 due to having living and sleeping areas that are approx. 30 cm (12 in.) narrower than the standard suite.
- Due to technical construction reasons, the verandas of the stern corner suites 565, 566, 665 and 666 have steel railing rather than glass railing.
- Due to technical construction reasons, the suites 627, 628, 715, 716, 729 and 730 have slightly obstructed views.
- In the stern corner suites 565 - 570 and 665 - 670, there may be soot deposits on the veranda due to the wind.
- The suites above the Europa Lounge and Gatsby's may be subject to a slight disturbance as a result of the entertainment programme.
- The suites 665 - 670 below the restaurant may be subject to increased background noise during the opening times.

As of: July 2023. Subject to change.

CRUISE
World

For bookings and enquiries contact

Cruise World Ltd
PO Box 302 421,
North Harbour,
Auckland

Ph: 09 917 4440

Out of AKL agents 0800 500 732
www.cruiseworld.co.nz
email: info@cruiseworld.co.nz



HAPAG 18 LLOYD
CRUISES