

BOREALIS

WE BELIEVE SMALLER IS BETTER

Fred Olsen are incredibly proud of their fleet of smaller ships. Each has been elegantly designed and they all look and feel like ships (not hotels or holiday resorts); with wide open deck spaces as well as lounges and restaurants which have been meticulously planned to ensure passengers have a wonderful experience. With fewer guests, the crew can really get to know the passengers on board. And the atmosphere on board their ships is always warm and civilised. The smaller size of the ships also means access to more interesting places, such as Norway's lesser-known Fjords as well as European cities with narrow waterways and size-restricted bridges. It also means they can dock in the heart of some of the world's most fascinating cities. Borealis joined Fred Olsen in 2020, and is perfectly suited for enjoying scenic cruising of the world's lesser-known waterways as well as on open ocean cruises. From cruising past remarkable landscapes and historical sites to capturing the beauty of the natural world. Redecorated and refurbished when she joined the fleet in order to meet the high standards of the Olsen family, Borealis features a wonderful series of lounges, bars, elegant restaurants and wide-open deck spaces, as well as beautiful cabins and suites; perfectly suited to the Fred Olsen style of cruising.

TECHNICAL DETAILS

PASSENGERS:	1, 353 (standard occupancy)
CREW:	642
TONNAGE (GT):	61, 849
LENGTH WIDTH HEIGHT:	237.9M 34.45M 48.1M

WHAT'S INCLUDED

- A la carte dinners, casual breakfast and lunch, buffets and late-night snacks
- Self-service tea and coffee at selected venues, and afternoon tea with sandwiches and cakes
- Room service
- All evening entertainment
- Use of leisure facilities, including swimming pools, jacuzzis and fitness centre
- A wide choice of on-board activities such as talks and demonstrations throughout the day
- Port taxes and fees
- Luggage portage between ship and cruise terminal

DESTINATIONS

- ✦ The Americas
- ✦ Cape Verde & The Canary Islands
- ✦ Portugal and the Islands of Madeira & the Azores
- ✦ British Isles
- ✦ Norwegian Fjords
- ✦ Arctic Norway, Iceland & Greenland
- ✦ European Cities
- ✦ Scandinavia & The Baltic
- ✦ Mediterranean & The Adriatic

DINING, ENTERTAINMENT & WELLNESS

RESTAURANTS:

Aurora and Borealis Restaurants, The Arctic Room, The View, The Poolside, Colours & Tastes, Vasco

Borealis' tastefully decorated and spacious two-tiered main restaurants are the focal points of dining on board. Enjoy delicious five-course, à la carte menus of expertly created dishes, prepared and cooked by a team of talented chefs.

The Poolside Café provides the perfect al fresco dining experience.

Depending on weather, the retractable roof will be open or closed meaning dining can take place all year round.

The View Buffet offers all kinds of delicious breakfast, lunch and dinner options when guests feel like a more relaxed experience.

Specialty dining options are available at Colours & Tastes which offers a blend of modern Asian Fusion dishes, and Vasco which serves a fresh and modern take on Indian food.

LOUNGES:

The Earth Room, The Botanical Room, The Observatory, Morning Light, Pub & Lounge, The Bookmark Cafe and Lounge, The Oriental Tea Room, The Lido Bar, Piano Bar, Ocean Bar

Borealis has a range of beautifully decorated sitting rooms, comfortable and cosy bars and libraries for guests to relax and enjoy a drink, a book or just to take in the view.

WELLNESS:

Atlantis Spa, Thermal Suite, Fitness Centre

Floor to ceiling windows means there are wonderful views of the sea to enjoy as guests are pampered at the spa. Passengers are looked after by a team of specialist beauticians, hairdressers and beauty therapists. Yoga and pilates and small group workout sessions are available at the fitness centre.



ENTERTAINMENT:

Neptune Lounge and Balcony, The Olsen Art Studio, The Auditorium, Swimming Pool and Jacuzzi, The Card Room, Boutique Shopping, The Flower Shop

Borealis has a purpose built beautiful studio space dedicated to art, and to craft. It's fully equipped with easels and art materials and the light is absolutely beautiful. Here guests can take part in painting and drawing classes as well as learn new crafts like block-printing. The Neptune Lounge is the ships elegant, two-tiered theatre where guests will be entertained by professional comedians, singers and magicians.

CABINS & SUITES

The cabins and suites on board Borealis are beautifully designed with wonderfully comfortable beds and superior quality linen.

All cabins and suites include:

- Climate control
- Interactive smart TV
- Hairdryer
- Desk with phone
- Fridge (which can be stocked as a mini-bar)
- Tea and coffee making facilities
- Room service

SUITES

Borealis has a range of suites for those who wish to treat themselves to more space and luxury.

The range of suites onboard include:

- **Olsen Suite**
- **Premier Suite**
- **Balcony Suite**
- **Balcony Junior Suite**
- **Single Balcony Suite**

SUITE DREAMS PACKAGE

The Suite Dreams Package is offered with compliments in all suites, it includes a few little luxuries to make the time on board Borealis even more special.

The Suite Dreams Package includes:

- Priority check-in
- A welcome bottle of sparkling wine
- Fruit basket
- Flowers or plant
- Bathrobe and slippers
- Luxury towels
- Free pressing service for formal wear
- Binoculars
- World atlas and country guide
- Afternoon canapé service
- Daily newsletter, featuring national and international news
- Pair of compact umbrellas for use ashore
- Laundry service discount vouchers
- Carafe of water, replenished daily

CABINS

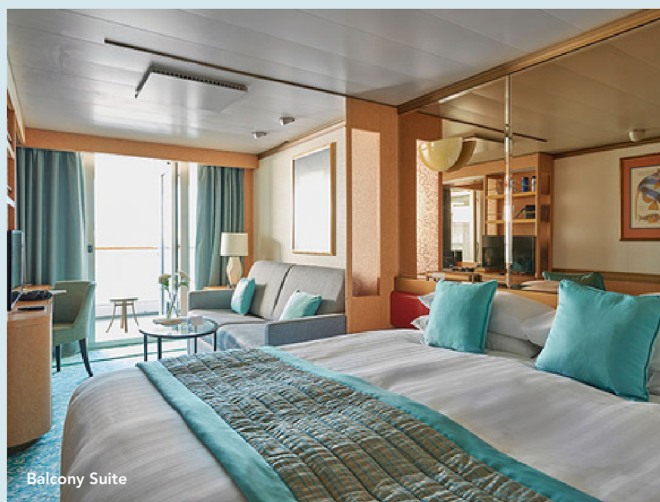
Borealis has a variety of different cabins to suit the customers journey that they are on and their budget.

The range of cabins include:

- **Interior Cabins** that are excellent value
- **Ocean View** cabins that have lots of light from picture windows or portholes
- **Balcony Cabins** with lovely private balconies or terrace spaces for sitting out and looking out

All cabins include:

- Bedroom with two single beds (can be converted into a queen-size bed)
- Bathroom with shower



Balcony Suite



Colours & Tastes



Botanical Room



Atlantis Spa