

LE COMMANDANT CHARCOT

# 2026 & 2027 ITINERARIES



ANTARCTICA, THE ARCTIC & SCANDINAVIA

# ANTARCTICA



## HIGHLIGHTS:



Expeditions



Photo  
Ambassador



Complimentary  
Parka



Polar Raid  
(surcharge applies)



Complimentary  
Boot Hire



## Beyond the Antarctic Circle – In the Wake of Jean-Baptiste Charcot

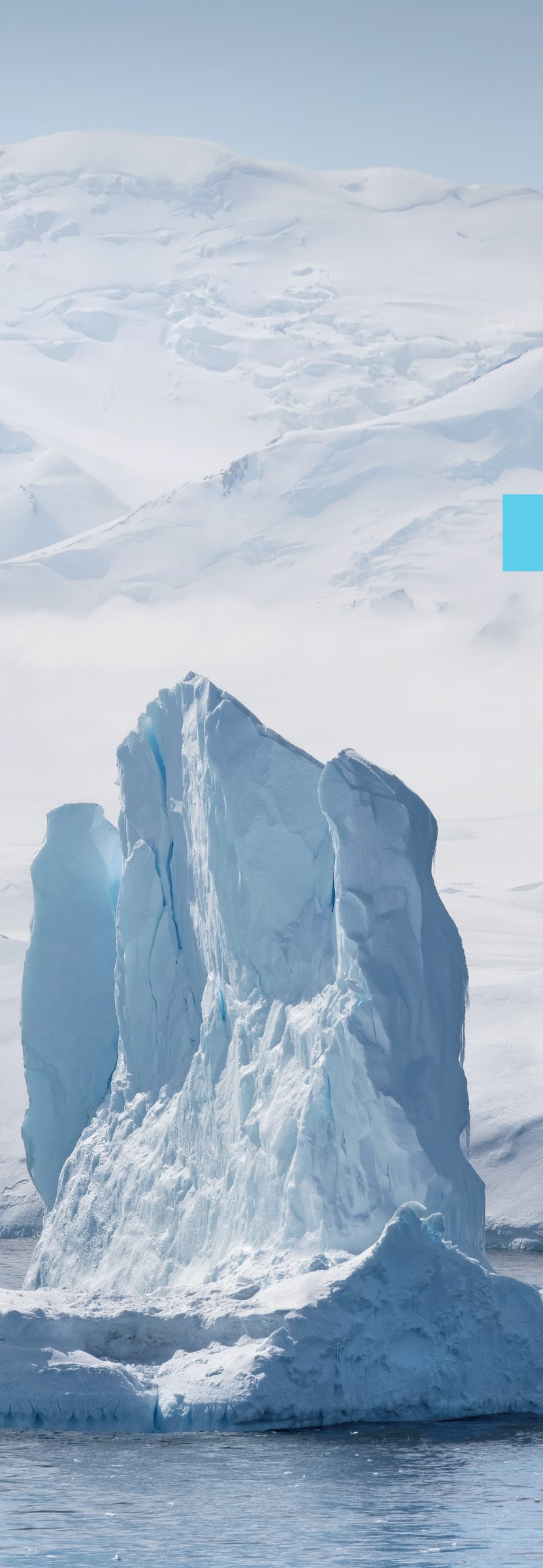


Your journey begins with your first glimpse of *Le Commandant Charcot* – a strikingly elegant ship built to navigate Earth’s most extreme environments. You are about to set off on an adventure to the ends of the Earth, to a continent with no native people yet rich in exploration history: Antarctica.

From the Antarctic Peninsula to the remote islets of the Bellingshausen Sea, *Le Commandant Charcot* will guide you on a 16-day expedition in the footsteps of the legendary explorer Jean-Baptist Charcot whose name it bears.

After crossing the legendary Drake Passage, you’ll glimpse the White Continent on the horizon. Charcot’s early 20th-century expeditions left a lasting legacy here – Salpêtrière Bay, Marguerite Bay, and Pourquoi-Pas Island all carry the mark of his journeys.

As you push deeper into the Bellingshausen Sea, ice dominates the horizon. The approach to Charcot Island is an emotional high point – few have seen this remote land. Throughout the voyage, expert guides share insights into the region’s history and wildlife. Observe Adelie, Gentoo, and chinstrap penguins, seals, orcas, and whales – sailing as the great explorers once did, into legend.



## Ushuaia • Ushuaia

2 January 2026

16 days / 14 nights on board

From \$40,100 per person<sup>(1)</sup>

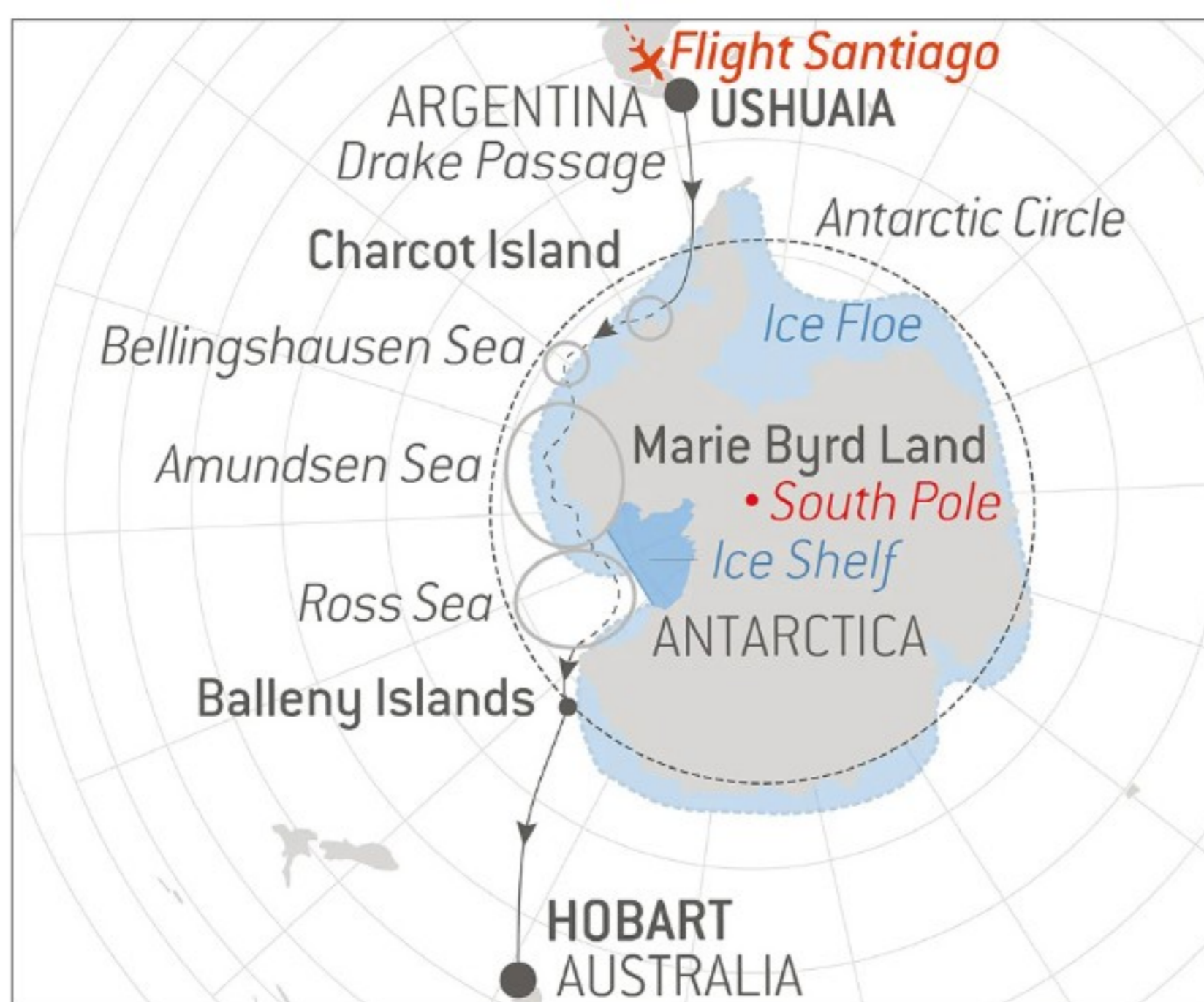
Included in your voyage<sup>(2)</sup>: return flights Santiago/Ushuaia, and 1-night accommodation in Santiago before embarkation and transfers.<sup>(3)</sup>

### HIGHLIGHTS

- With the expertise and guidance of our photo ambassador, you'll have a unique opportunity to capture your voyage. The programme includes workshops, conferences, and personalised advice to enhance your photographic skills.
- An exploration aboard *Le Commandant Charcot*, following in the footsteps of Jean-Baptiste Charcot's two great polar expeditions, to the Bellingshausen Sea, exploring abundant biodiversity.
- Cross the Antarctic Circle and the exploratory approach of the distant Charcot Island.
- Outings and shore visits in a zodiac inflatable with a reinforced team of naturalist guides.
- Conferences and information meetings on board with our passionate experts, specialists in the fauna, flora and history of the polar regions.
- Landscapes: immense glaciers, monumental icebergs, immersion in the heart of the ice floes.
- Wildlife: Adelie, chinstrap and Gentoo penguins; leopard, crabeater and Weddell seals; humpbacks, Minke whales and orcas, and the possibility of observing emperors penguins and Ross seals.
- Many activities\*: kayaking, hiking or snowshoeing, polar plunge without polar suit.

\*Subject to weather and ice conditions and to sailing opportunities. Limited places available.

## Unexplored Antarctica between Two Continents



Charcot, Bellingshausen, Amundsen, Scott... aboard *Le Commandant Charcot*, the spirit of these legendary explorers is ever-present. Thanks to its unique ability to sail deep into the ice, this pioneering vessel invites you to follow in their footsteps on a rare and remarkable journey - from the far south of the American continent to the distant shores of Australia.

This exceptional half-circumnavigation leads you across the legendary seas of Bellingshausen and Amundsen, toward the untouched coastlines of Marie Byrd Land and, if conditions permit, the mythical Charcot Island. You will sail through the Ross Sea, the world's largest marine protected area - home to penguins, seals, whales, orcas, and Antarctic petrels.

In this land of extremes, time stretches and the horizon fades into dreamlike stillness. Explore vast ice shelves, the majestic Drygalski Glacier, and the timeless Ross Ice Shelf. At the foot of Mount Erebus, where Shackleton and Scott once camped, history becomes palpable.

Your adventure concludes in Hobart, Tasmania.



## Ushuaia • Hobart

16 January 2026

31 days / 29 nights on board

**Price on demand**

Included in your voyage<sup>(2)</sup>: flight Santiago/Ushuaia.  
1 night accommodation in Santiago before embarkation  
and transfers<sup>(3)</sup>.

### HIGHLIGHTS

- With featured guest Jonathan Shackleton, descendant of Sir Ernest Shackleton and family historian, and the presence of Sue Flood, British Photo Ambassador and polar specialist, and author of Emperor - The Perfect Penguin.
- The half-circumnavigation of the Antarctic, an unforgettable trip into the heart of the ice and a continent full of extremes.
- The exploratory approach to some of the most little-known islands in the world: Charcot Island and the Islands of Marie Byrd Land.
- A dive into the history of the conquest of the South Pole, from the Bay of Whales, a natural harbour that served as a base for Roald Amundsen's victorious expedition in 1911.
- The crossing of three southern seas: Bellingshausen, Amundsen and Ross.
- Outings and shore visits in a zodiac dinghy or hovercraft\* with a reinforced team of naturalist-guides.
- The landscapes: ice shelves, including that of Ross, surrealist glaciers, monumental icebergs, immersion in the heart of the ice floe.
- The wildlife: crabeater, leopard and Weddell seals; Adelie penguins; humpback whales and orcas, Royal penguins.
- Many activities\*: kayaking, hiking or snowshoeing.

\*Subject to weather and ice conditions and to sailing opportunities.  
Limited places available.

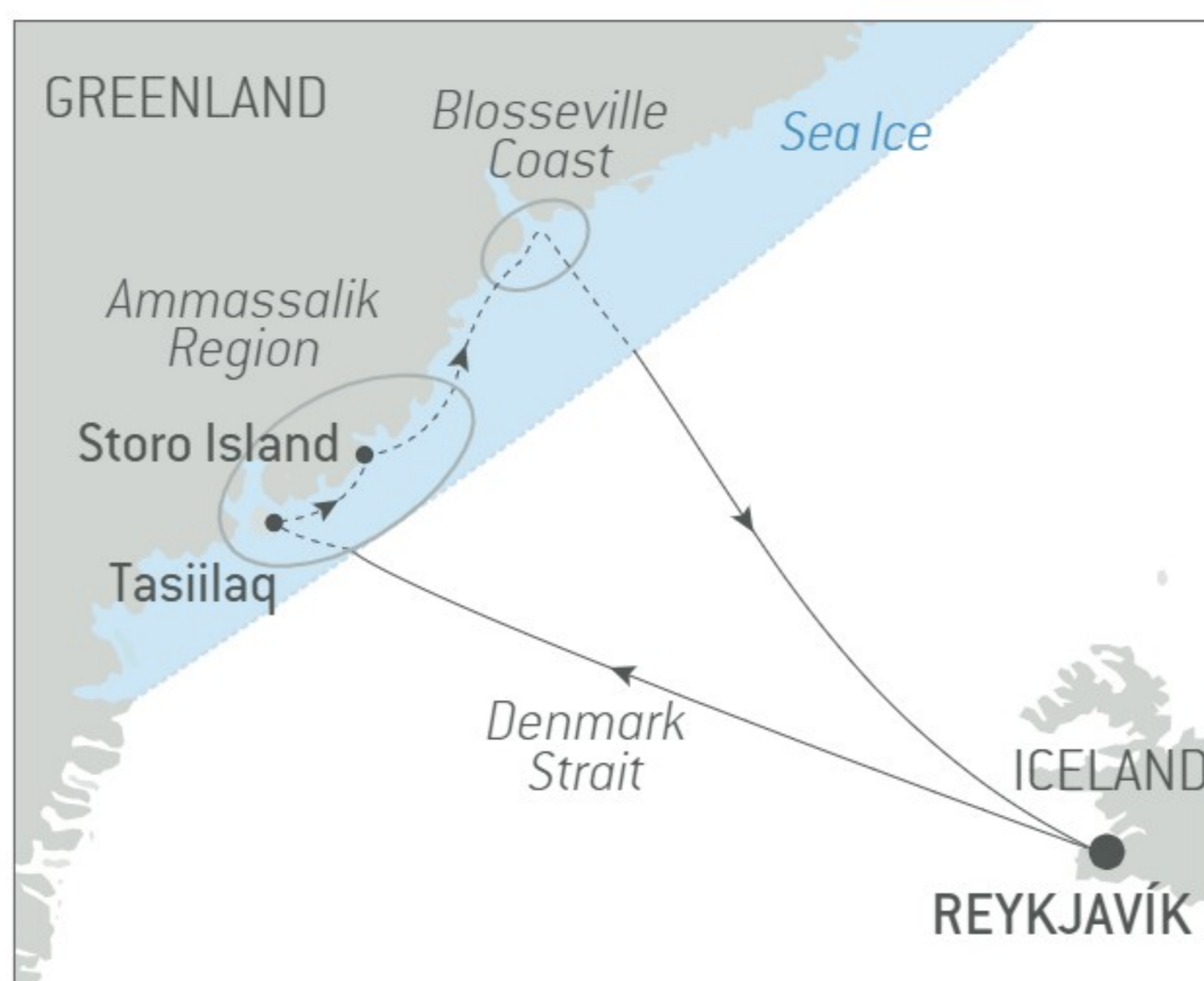
# THE ARCTIC & SCANDINAVIA







## Inuit spring of Ammassalik



After the long Arctic winter, a thick coat of sea ice still clings to the shores of Greenland's remote East Coast - lands once coveted by legendary explorers. To approach them is to connect with a raw, fragile nature. Here, only the present exists.

Aboard *Le Commandant Charcot*, specially designed for polar exploration, you'll journey into the icy realms of Ammassalik and Blosseville - regions inaccessible to traditional ships in spring. In this ever-changing wilderness, surprises await and moments hang suspended in time. As Inuit wisdom reminds us, life flourishes in the now.

Colourful villages emerge from the white, where the Inuit live in harmony with the seasons. Join the last hunters of the polar world on a dog sled outing, feeling the thrill of this timeless journey. As one of the first guests of the season, you'll be greeted with warm smiles and shared stories - Inuit hospitality is real, and unforgettable.

Walk among calving glaciers and shimmering hummocks. Kayak or ride a zodiac through ice-laced waters. Watch for eiders, whales, and the great *nanuk*, the polar bear.

In Greenland, time disappears. What remains is the intensity of the moment - pure, powerful, and deeply human.



## Reykjavík • Reykjavík

4 May 2026

11 days / 10 nights

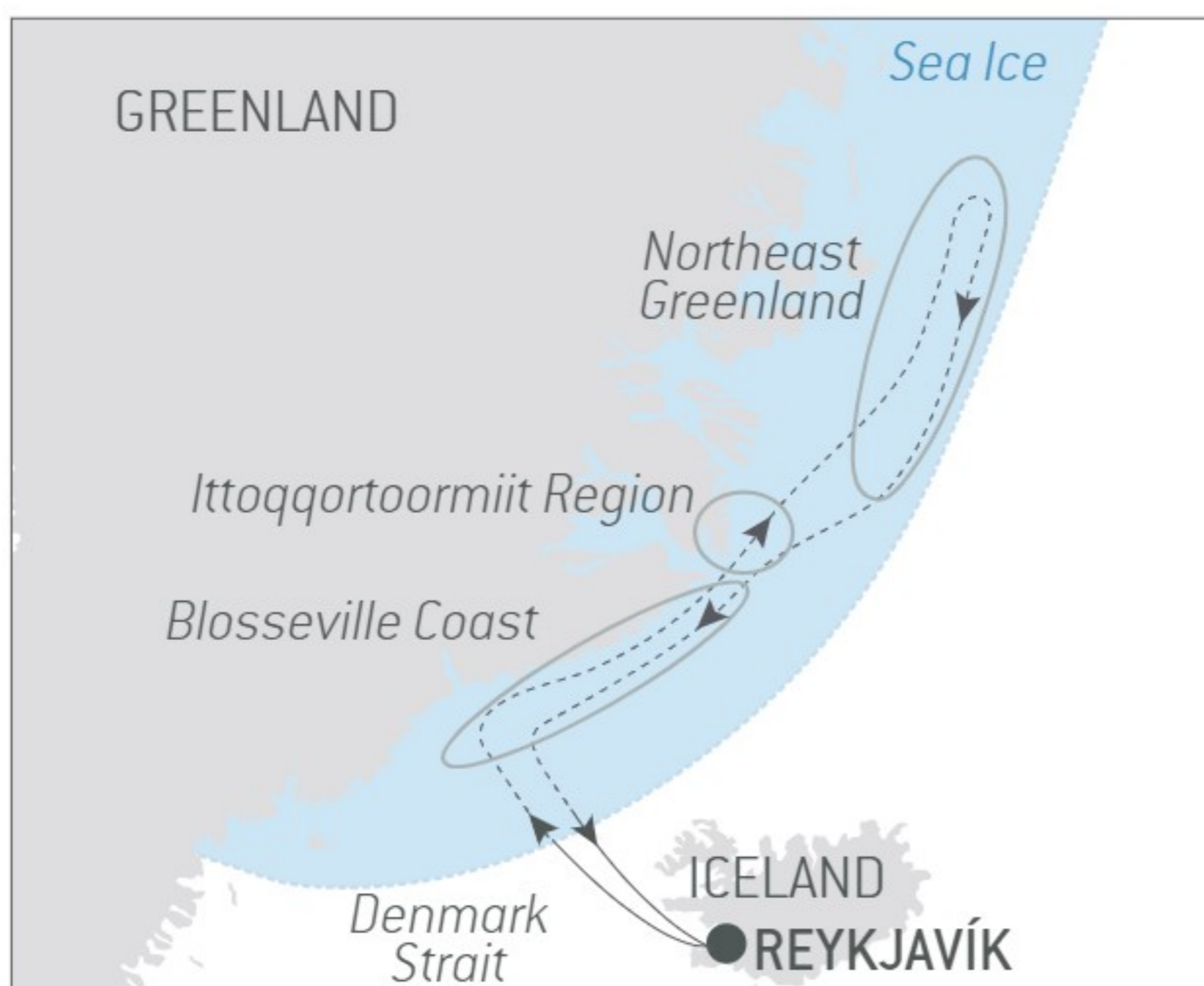
From AU\$33,970 per person<sup>(1)</sup>

### HIGHLIGHTS

- Experience the exceptional: meet the Inuit people at the end of the winter, to share unique moments on the ice floe, discover their spring traditions and let yourself be transported during a dog sled outing.
- Aboard *Le Commandant Charcot*, a polar exploration vessel opening to the exterior, take time with these unique moments of exploration and observation, in the silence and respect of fragile landscapes and encountered species.
- With the expertise and guidance of our photo ambassador, you'll have a unique opportunity to capture your voyage. The programme includes workshops, conferences, and personalised advice to enhance your photographic skills.
- Set off on the trail of the great explorers who attempted to navigate the eastern coast of Greenland, a region that long remained isolated due to being hard to reach and only accessible at this time of year thanks to *Le Commandant Charcot*.
- Travelling across the Denmark Strait with the possibility of seeing blue whales and humpback whales.
- Exploring the region of Ammassalik, on board or on the ice floe, from alpine terrain to landscapes of ice sculpted by the elements.
- The Blosseville Coast and its ice cap that comes straight from the North Pole.
- The landscapes: alpine landscapes, polar ice cap, winding fjords, icebergs caught in the ice, calving glaciers, patches of ice floe drifting from the North Pole, compression ridges, broken-up ice floe.
- The wildlife: blue whales, humpback whales, polar bears, seals, sea birds.
- Many activities\*: dog sledding, kayaking, hiking or snowshoeing, polar plunge.

\*Subject to weather and ice conditions and to sailing opportunities.  
Limited places available.

## Northeast Greenland's unexplored sea ice



Venture to the untouched north-east coast of Greenland - one of the most remote and icebound regions on Earth. Carried by the Transpolar Drift, sea ice dominates the landscape in spring, setting the stage for an unforgettable Arctic experience.

This early season brings a raw, wild beauty. Along the legendary Blosseville Coast, sharp ice ridges form over waters rarely seen, while alpine peaks rise from the opaline expanse. You'll explore this mysterious, ice-sculpted land with humility and awe.

Discover the isolated Ittoqqortoormiit region at the entrance of Scoresby Sound, the world's largest fjord network. Here, colourful homes dot the white landscape, and Inuit communities offer warm welcomes and authentic moments.

Venture farther into the drifting ice, navigating surreal panoramas by ship, kayak, zodiac, or on foot. Witness calving glaciers, majestic icebergs, and - if you're lucky - a blue whale or polar bear in its natural realm.

In this world of frozen wonder, you'll rediscover the awe of childhood. At the edge of the world, the moment becomes everything.



## Reykjavík • Reykjavík

14 May 2026

15 days / 14 nights on board

From AU\$38,490 per person<sup>(1)</sup>

### HIGHLIGHTS

- Explore the coasts of Blosseville, Ittoqqortoormiit and the north-east of Greenland, and take the time for a rich and careful exploration of this untouched remote region in the early Arctic summer, amid the ice carried along the Transpolar Drift.
- With the expertise and guidance of our photo ambassador, you'll have a unique opportunity to capture your voyage. The programme includes workshops, conferences, and personalised advice to enhance your photographic skills.
- Aboard *Le Commandant Charcot*, a polar exploration vessel opening to the exterior, savour these unique moments of exploration and observation, in the silence and respect of fragile landscapes and encountered species.
- Cross the Denmark Strait and the possibility of spotting blue whales and humpback whales.
- The Blosseville Coast and its ice cap that comes straight from the North Pole.
- Exploring the region of Ittoqqortoormiit – where the last hunters of the polar region live – at the entrance to Scoresby Sound, the world's largest network of fjords.
- The landscapes: striped mountains, fjords, glaciers, icebergs, polar ice cap, patches of ice floe drifting from the North Pole, hummocks.
- The wildlife: blue and humpback whales, polar bears, narwhals, seals, muskoxen, Arctic foxes, orcas, sea birds.
- Many activities\*: hiking or snowshoeing, ice fishing, polar plunge.

\*Subject to weather and ice conditions and to sailing opportunities.  
Limited places available.

## In the ice of the Arctic from Greenland to Svalbard



To sail beyond the Arctic Circle is to follow in the footsteps of legendary explorers - those who dedicated their lives to unveiling the secrets of the polar regions. With humility and wonder, you will journey aboard *Le Commandant Charcot*, a technological marvel, into Greenland's inaccessible north-east before continuing to the untouched landscapes of Svalbard.

Explore mythical regions - Ammassalik, Blosseville, and Ittoqqortoormiit - where the echoes of pioneers like Paul-Émile Victor, Jules de Blosseville, and Jean-Baptiste Charcot still linger. Drift through sea ice carried from the North Pole, and marvel at sculpted floes, icebergs, and subtle shifts of Arctic light.

As your voyage turns eastward, Svalbard awaits. Navigate past Nordaustlandet's vast ice cap and through the frozen Hinlopen Strait. In the Soraust-Svalbard Nature Reserve, monumental basalt cliffs and pristine fjords shelter reindeer, whales, and thousands of seabirds.

Whether observing from the ship's decks, gliding in a kayak or zodiac, or hiking beside ice-streaked shores, each encounter deepens your connection to this wild, fragile world.

In these extreme yet vibrant lands, patience is rewarded. Amid silence and ice, nature reveals its wonders to those who truly look.



## Reykjavík • Longyearbyen

28 May & 13 June 2026

17 days / 16 nights on board

From AU\$49,370 per person<sup>(1)</sup>

Included in your voyage<sup>(2)</sup>: transfer from port to airport after disembarkation and flight Longyearbyen/Paris.

### HIGHLIGHTS

- Explore the ice to the north-east of Greenland, inaccessible to traditional ships in this extreme season (late spring), as well as the remote lands of the Svalbard archipelago.
- With the expertise and guidance of our photo ambassador, you'll have a unique opportunity to capture your voyage. The programme includes workshops, conferences, and personalised advice to enhance your photographic skills.
- Aboard *Le Commandant Charcot*, a polar exploration vessel opening to the exterior, take time to immerse yourself in unique moments of exploration and observation, in the silence and respect of fragile landscapes and encountered species.
- Discover Nordaustlandet (North East Land), Europe's largest ice cap.
- Explore the Sørøst-Svalbard Nature Reserve, the second largest protected area in Norway.
- Sail in the Hinlopen Strait, infiltrated by ice and connecting Spitsbergen to Nordaustlandet.
- The landscapes: mountains patterned with multi-coloured strata, fjords, jagged mountains, glaciers, icebergs, ice floes, sheer cliffs, polar ice cap, wild tundra.
- The wildlife: polar bears, walruses, Arctic foxes, Svalbard reindeer, whales, sea birds.
- Many activities\*: kayaking, hiking or snowshoeing, polar plunge.

\*Subject to weather and ice conditions and to sailing opportunities. Limited places available.



## The Geographic North Pole



Head for 90 degrees North! Since the 16th century, the greatest expeditions have constantly tried to reach the North Pole. This mythical geographic point inspires and attracts as much as it fascinates dreamers and conquerors seeking out the other side of the world.

What if *Le Commandant Charcot* achieved this absolute pinnacle adventure by enabling you, perhaps, to tread on this virtually unattainable point?

Following in the wake of Frederick Cook, Robert Edwin Peary or Roald Amundsen, who were among the many who fought to achieve this elusive goal, you will be part of the chosen few ones to attempt the odyssey, 700 km (435 miles) from any land.

From Spitsbergen, you will head towards the north to sail the waters at the edges of the Earth, towards landscapes that change constantly according to the ice and the plays of light. Nature reigns supreme here, sheltering exceptional wildlife that you will perhaps be lucky enough to see as your journey progresses: polar bears, seals or even whales! Your exploration of this silent world, frozen by the cold, will continue as you attempt to reach the Grail of all polar explorers: the North Pole!

Swept by the winds and the currents, the ice floe is constantly drifting and the Captain of your ship will manoeuvre carefully and with great humility in an attempt to reach the northernmost point of our planet.



## Longyearbyen • Longyearbyen

12 & 27 July , 11 & 27 August 2026

16 days / 15 nights on board

From AU\$55,400 per person<sup>(1)</sup>

Included in your voyage<sup>(2)</sup>: flights Paris/Longyearbyen and transfer before embarkation.

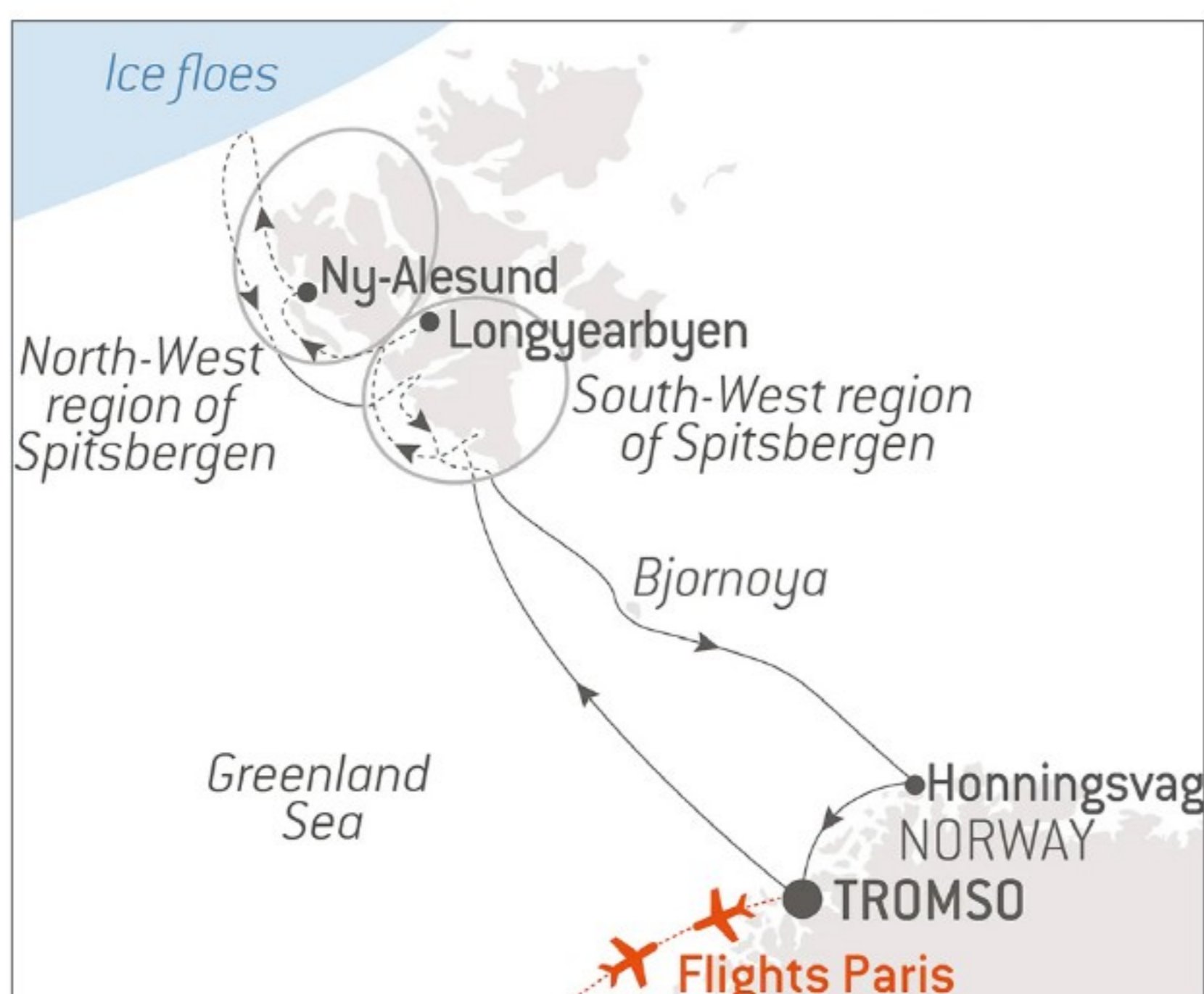
### HIGHLIGHTS

- Be among the few people in the world to go in search of the Geographic North Pole!
- Enjoy the unique experience of sailing through the heart of the ice floe and the opportunities to observe the endless variety of forms and states of the ice, in the silence and respect of the landscapes through which you travel through.
- With the expertise and guidance of our photo ambassador, you'll have a unique opportunity to capture your voyage. The programme includes workshops, conferences, and personalised advice to enhance your photographic skills.
- Landscapes: ice floes. In Spitsbergen, jagged mountains, steep-sided valleys, sheer cliffs, gigantic glaciers.
- Wildlife: polar bears, Northern fulmar, ivory gull, seals, whales.
- Many activities\*: kayaking, hiking or snowshoeing, polar plunge.



\*Subject to weather and ice conditions and to sailing opportunities. Limited places available.

## Polar Nights: From the North Cape to Spitsbergen



The writer Jørn Riel described the polar night as a “a world apart, [...] unique and fascinating, where nature reigns supreme and men keep a low profile.” When the northern winter approaches, the sun hardly rises over the horizon any more: let yourself be guided towards a new temporality, the moment when a long dusk stretches out after the day, until the polar night which will extend until mid-February 2027 in Svalbard.

From the delicious comfort of *Le Commandant Charcot* sailing from the jagged coastlines of Norway to the ice-covered reliefs of Spitsbergen, dive into the heart of landscapes lit by powdered hues and set off in search of the exhilarating spectacle of the Northern Lights and share unique moments, just a stone's throw away from the emblematic North Cape in Lapland, with the Sami, one of Europe's last indigenous communities.



### Tromso • Tromso

14 October 2026

11 days / 10 nights on board

From AU\$20,900 per person<sup>(1)</sup>

Included in your voyage<sup>(2)</sup>: return flights Paris/Tromso and transfers.

### HIGHLIGHTS

- A PONANT Explorations journey above the Arctic Circle, featuring mineral splendours and encounters with Nordic communities.
- Aboard *Le Commandant Charcot*, a warm and refined cocoon opening to the exterior, enjoy a unique experience in complete communion with the surrounding scenery.
- Bid farewell to the sun in the fjords of Spitsbergen, at the beginning of the long polar night.
- Reach the North Cape, an emblematic site and the northernmost point of continental Europe.
- The possibility of observing the enchanting show of the Northern Lights.
- Make the most of winter activities\* (hikes, visiting the North Cape from Honningsvåg, etc.) led by your naturalist guides and local guides.
- Varied landscapes, coastal panoramas, tundra, dolomite cliffs, majestic fjords, ancient glaciers.
- Wildlife: bears, reindeer, blue whales, minke whales, orca.

\*Activities are subject to weather conditions and must be booked in advance of the cruise. More information available soon.

## Polar Lights: From North Cape to the Lofoten Islands



Winter is silently approaching, and near the Arctic Circle daylight is slowly fading, giving way to the long twilight that precedes the darkness. From the welcoming comfort of *Le Commandant Charcot*, take time to discover the shores of Norway, including the breathtaking Lofoten archipelago.

See the North Cape, the tip of mainland Europe, and explore the rugged coastline at the edge of the Arctic and the natural sanctuaries of Norway: dolomite cliffs, an archaeological site dating from the Bronze Age, pine forests, and Lapland, home to the Sami, one of Europe's last indigenous communities.



## Tromso • Narvik

24 October 2026

9 days / 8 nights on board

From AU\$15,740 per person<sup>(1)</sup>

Included in your voyage<sup>(2)</sup>: flights Paris/Tromso and Narvik/Paris and transfers.

### HIGHLIGHTS

- A PONANT Explorations journey into the heart of Norway's northern coasts, from the North Cape to the Lofoten Islands, as daylight fades with the approach of winter.
- With the expertise and guidance of our photo ambassador, you'll have a unique opportunity to capture your voyage. The programme includes workshops, conferences, and personalised advice to enhance your photographic skills.
- Aboard *Le Commandant Charcot*, a warm and refined cocoon that opens onto the exterior to enjoy a unique experience in complete communion with the surrounding landscape.
- Immerse yourself in the coastline, the fishing villages, and the magnificent landscapes of Norwegian Lapland.
- Discover the Lofoten archipelago, a jewel offering wild nature and a Viking heritage.
- Varied landscapes: archipelagos, coastal panoramas, snow-covered peaks and expanses home to reindeer and seabirds.
- The possibility of observing the spellbinding Northern Lights.
- Enjoy one included excursion<sup>^</sup> per person per stop during your cruise, from a selection curated by our destination experts.
- Sail to the North Cape, an emblematic site and the northernmost point of continental Europe.

<sup>^</sup>Advance bookings open approximately two months prior to departure on a first-come, first-served basis, subject to availability.

## Autumn Splendours: From Lofoten to the Norwegian Fjords



Aboard *Le Commandant Charcot*, discover the shores of Norway and dive into the history of the coastal towns and fishing villages that punctuate this wild setting. The coastline, shaped by the ebb and flow and forged over the centuries by glaciers, will unveil its stunning panoramas, a veritable invitation to savour *friluftsliv*, the Norwegian way of life celebrating time outdoors.

As winter draws near, the light dims to reveal the striking beauty of the Lofoten Islands and the serenity of the majestic fjords, like an ode to *Kos* - the pleasure of enjoying the moment.



## Narvik • Bergen

1 November 2026

14 days / 13 nights on board

From AU\$19,770 per person<sup>(1)</sup>

Included in your voyage<sup>(2)</sup>: flight Paris/Narvik and transfers.

### HIGHLIGHTS

- A journey sailing as closely as possible to the shores of Norway, featuring majestic fjords and beautiful and characterful cities, beneath a theatrical light at the approach of winter.
- With the expertise and guidance of our photo ambassador, you'll have a unique opportunity to capture your voyage. The programme includes workshops, conferences, and personalised advice to enhance your photographic skills.
- Discovering emblematic Scandinavian architecture: Bryggen, the Hanseatic district of Bergen, the Art Nouveau district of Ålesund and the rorbuer, dark red fishing huts.
- Make the most of an excursion, included<sup>^</sup> for each person at each stopover during the cruise, all selected by our destination specialists.
- Aboard *Le Commandant Charcot*, a warm and refined cocoon opening to the exterior to enjoy a unique experience in complete communion with the surrounding scenery.
- Discovering the Lofoten archipelago, a real wonder of wild nature, and its Viking heritage.
- Discovering the Geiranger Fjord, a UNESCO World Heritage Site, and the Sognefjord, the world's second-longest fjord.
- Crossing the Arctic Circle.

<sup>^</sup>Advance bookings open approximately two months prior to departure on a first-come, first-served basis, subject to availability.

# The Gulf of Bothnia, at the Gateway to the Arctic



It's raining stars in our bed. This sensitive evocation of the Arctic night, which is the title of Scandinavian poetry collection, invites us to the best seats in the house to watch the union between the vault of heaven and the earth's crust, beneath a multitude of stars. In the delicious comfort of *Le Commandant Charcot*, experience winter at the gateway to the Arctic, admire the spectacle of the Gulf of Bothnia, between enchanted landscapes and traditions, and from the Stockholm Archipelago discover a magical world in half-light. Experience the period of Kaamos, the polar night, during which luminosity is reduced to a twilight of 4 to 5 hours per day, representing everyday life for the local population.

Please note that the sailing programme, shore visits and activities are subject to weather conditions.



### Helsinki \* Kemi

22 & 30 December 2026, 7 & 15 January 2027  
9 days / 8 nights on board

From AU\$15,450 per person<sup>(1)</sup>

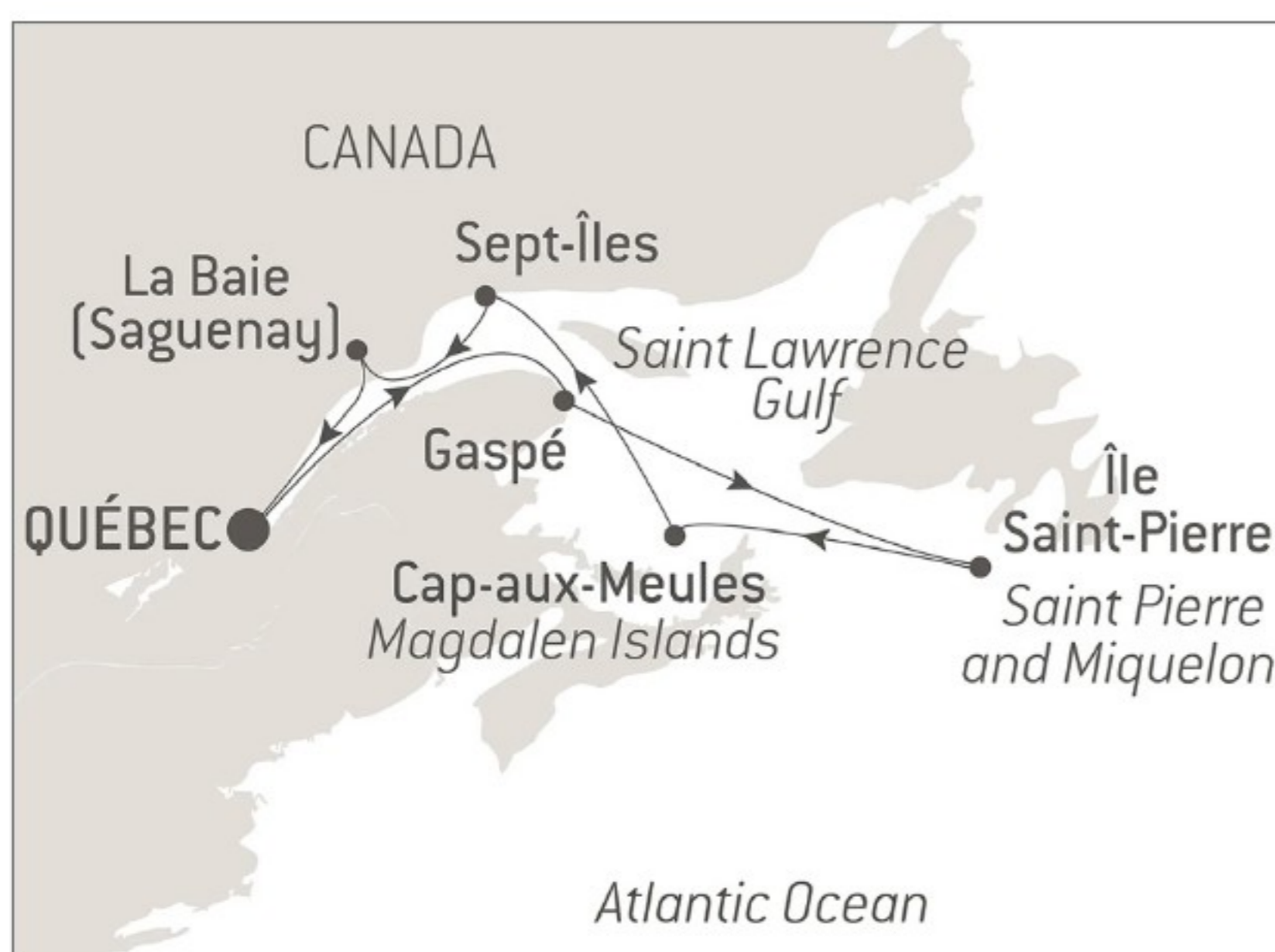
Included in your voyage<sup>(2)</sup>: flight Kemi/Paris and transfers.

### HIGHLIGHTS

- A PONANT Explorations journey in the Gulf of Bothnia in the heart of the splendid northern winter, featuring singular history and stunning natural landscapes.
- Aboard *Le Commandant Charcot*, a luxurious and reassuring cocoon opening out onto the exterior, take the time to observe unique landscapes, in particular during a scenic sail among the *skerries* off the coast of Stockholm.
- The snow-covered landscapes of Swedish and Finnish Lapland, to the north of the Gulf of Bothnia.
- Enjoy winter activities<sup>^</sup> (snowshoeing, dogsledding (paying) etc.) thanks to a selection curated by our destination experts.
- Discover the wonderland of the Scandinavian towns illuminated for the winter.
- Towns with exceptional heritage: the old town of Rauma, a UNESCO World Heritage Site; the church-town of Gammeltad (visiting from Lulea); and the neoclassical city of Oulu.

<sup>^</sup>Advance bookings open approximately two months prior to departure on a first-come, first-served basis, subject to availability.

## The St. Lawrence River in the Heart of the Boreal Winter



In the heart of the northern winter, set sail aboard *Le Commandant Charcot*, a welcoming cocoon, to discover the St. Lawrence River and its unique and enchanting wide open spaces. From Québec to Saint-Pierre Island, via Gaspé, Grindstone Cape, Saguenay and Sept-Îles, cruise on the mighty waters of this body of water and admire the changing landscapes where nature reigns supreme.

The boreal forests and pristine valleys invite contemplation and exploration. You may even be lucky enough to spot an iconic caribou or moose in this magnificent setting, where the colourful dwellings of the temporary fishing villages built on the ice of the Saguenay Fjord defy the harshness of the winter landscape. Experience warm, unforgettable moments as you meet local communities renowned for their hospitality.

Itinerary is subject to change.



## Québec • Québec

13 & 27 February 2027

15 days / 14 nights on board

From AU\$34,040 per person<sup>(1)</sup>

### HIGHLIGHTS

- Explore the St. Lawrence in winter, to experience nature on a grand scale and meet Canadians, who are known for their great hospitality. This exclusive PONANT Explorations offer is only possible aboard *Le Commandant Charcot*.
- Take advantage of a programme of included excursions<sup>^</sup> and optional fee-based activities carefully designed by our destination experts and led by local guides.
- With the expertise and guidance of our photo ambassador, you'll have a unique opportunity to capture your voyage. The programme includes workshops, conferences, and personalised advice to enhance your photographic skills.
- Visit traditional temporary fishing villages set up on the ice of the Saguenay Fjord; meet locals and experience the hospitality and friendliness of the Québécois and the First Nations (Innu and Micmac) communities.
- If you are particularly lucky, you may get to admire the unique colours of the Northern Lights rippling across the sky.
- Landscapes: vast expanses of wilderness, Saguenay Fjord, pristine boreal forests, sea ice, snow-covered valleys.

<sup>^</sup>Advance bookings open approximately two months prior to departure on a first-come, first-served basis, subject to availability.

---

## CONTACT & RESERVATIONS

**CRUISE  
WORLD** 

Contact Cruise World on 09 917 4440 | 0800 500 732  
info@cruiseworld.co.nz | www.cruiseworld.co.nz

---

 facebook.com/LeCommandantCharcot

 Instagram: @lecommandantcharcot

 Youtube: PONANT Voyages

RELEASE DATE: MAY 2025

 **PONANT**  
EXPLORATIONS

Lower Ground Floor, 165 Walker Street, North Sydney NSW 2060, Australia

ABN 35 166 676 517



Terms and conditions: (1) Price is AUD per person, based on double occupancy, based on double occupancy, based on double occupancy, and subject to change at any time. The category of stateroom to which this price applies may no longer be available. The fares mentioned on each product reflect the best rates available at the time of publication, May 2025. Prices vary over time depending on the availability of our voyages and are subject to change without notice. (2) Included flights selected by PONANT in economy class. Prices may change depending on availability and prices charged in real time by airline companies. (3) Based on a double room at the time of printing this brochure, May 2025. Rates are subject to change depending on the room category and the season. The itineraries, activities, wildlife, highlights, as well as the photos used in this brochure are only possible experiences and therefore cannot be guaranteed. Photos compliant with operational regulations and taken during a safety flight. More terms and conditions apply. Find more information in the 'General Terms and Conditions of Sale' at au.ponant.com. Photographs ©Studio PONANT: Alex Kydd; Gilles Trillard; Ophélie Bleunven; Olivier Blaud; Julien Fabro; Ian Dawson; Sue Flood; Morgane Monneret; Violette Vauchelle; Laurence Fischer; Morgane Lanco; Teo Quillier; Joanna Marchi; Marvyn Kuhr. ©AdobeStock